

GLOBAL ORDERING INFORMATION

Dear Valued Customer,

As we work to combine our ordering systems, we cannot accept combined purchase orders for CIVCO RT and Qfix legacy products. Purchase orders must continue to be submitted separately. We are diligently working towards one system and will notify you when that occurs. Thank you for understanding!

CIVCO RT LEGACY PRODUCTS

CIVCO RT legacy part numbers are anything besides “RT-” (for example, anything beginning with MT, BPL, OAP, or a whole number).

CUSTOMER CARE

Toll-free within the U.S. and Canada: **800.842.8688**

Direct Dial: **+1 712.737.8688**

Facsimile: **877.613.6300**

Direct Sales Email: **CRTorder@CQmedical.com** or **order@CivcoRT.com**

Distributor Sales Email: **distorder@CQmedical.com**

OEM Email: **oemorder@CQmedical.com**

OFFICE HOURS

Monday – Thursday, 7:30 a.m. – 5:00 p.m.,

Friday 7:30 a.m. – 4:00 p.m. U.S. Central Time.

QFIX LEGACY PRODUCTS

Qfix legacy part numbers begin with “RT-”.

CUSTOMER CARE

Toll-free within the U.S. and Canada: **800.526.5247**

Direct Dial: **+1 610.268.0585**

Facsimile: **610.268.0588** or **800.831.8174**

Direct Sales Email: **Qsales@CQmedical.com** or **Sales@Qfix.com**

OFFICE HOURS

Monday – Friday 7:30 a.m. – 5:30 p.m.

U.S. Eastern Time.

SHIPPING

Shipping is the responsibility of the customer. Refer to the applicable legacy CIVCO RT or Qfix Standard Terms and Conditions* for more information.

PRICING

Prices are subject to change without notice. Minimum purchase quantities or amounts may apply. Please contact Customer Care for details.

SAMPLE REQUESTS

Free non-sterile samples are available on selected products. Samples are provided for sizing and fit purposes only and should not be used in clinical procedures.

RETURN POLICY

If the merchandise you received is defective or not as you ordered, please contact Customer Care within 30 days of invoice date for assistance. Returned products may be subject to additional restocking fees. Please refer to the applicable legacy CIVCO RT or Qfix Standard Terms and Conditions* for more information.

CLAIMS, SHORTAGES OR DAMAGES

Open all shipments immediately and inspect for concealed damages, shortages or errors. If goods were damaged in shipping, please hold the package and request a carrier inspection and claim form. Please report any shortages or errors to Customer Care within 30 days of receipt of shipment.

PRODUCT WARRANTY

Product warranty information is available on the legacy CIVCO RT and Qfix websites (www.CivcoRT.com, www.Qix.com).

QUALITY STANDARDS

Legacy CIVCO RT and Qfix comply with ISO 13485:2016 Quality Standards. Note: Not all products listed are available in every market. Please contact your account representative or local distributor for availability.

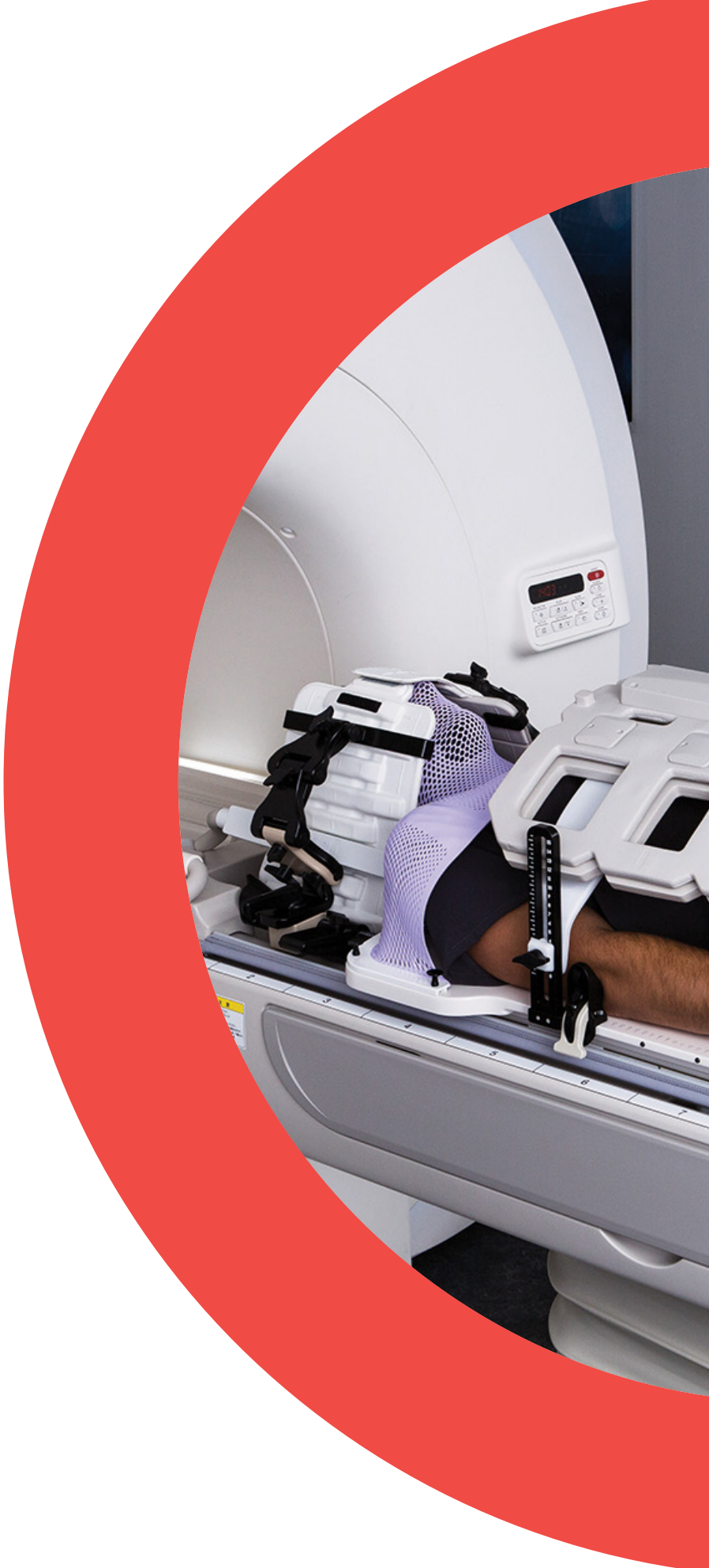
*Terms and conditions subject to change without notice. Contact legacy CIVCO RT or Qfix Customer Care for most updated terms and conditions.



info@CQmedical.com | www.CQmedical.com

MRSeries™

Always refer to product labeling to identify whether a device is MR Safe or MR Conditional.



Universal Couchtop MRI Overlays

Universal Couchtop MRI Overlays are made from fiberglass and feature Prodigy 2 indexing in 7 cm increments. Universal Couchtop is available on most major CT, MR, Proton and LINAC models to provide seamless transfer from imaging to treatment.

- Three-Pin Lok-Bar offers the option to use existing MR Safe or MR Conditional devices by indexing them to the overlay
- See pages 3-17 for additional information on Universal Couchtop.



UNIVERSAL COUCHTOP MRI OVERLAY FOR:	INDEXING STYLE	COMPATIBLE LOK-BAR	PART #
SIEMENS			
MAGNETOM Vida 3T (with Type-S & Posifix mask attachment)	Prodigy 2	MTIL6054	MTM3004
MAGNETOM Sola 1.5T (with Type-S & Posifix mask attachment)	Prodigy 2	MTIL6054	MTM3004
CANON (FORMERLY TOSHIBA)			
Vantage Galan 3T	Prodigy 2	MTIL6054	-
Vantage Orian 1.5T	Prodigy 2	MTIL6054	-

Contact Canon Medical for more information

Three-Pin Lok-Bar

Three-Pin Lok-Bars allow you to index MR Safe or Conditional devices to your MRI overlay.



MTIL3351	Interloc 50 cm
MTIL3352	Interloc 53 cm
MTIL3454	Prodigy 50 cm
MTIL6054	Prodigy 2, 53 cm

Elekta Unity MR-LINAC Three-Pin Lok-Bar

Allow the use of MRSeries positioning devices

MTULB001	Three-Pin compatible
MTULB002	QA Lok-Bar, contains spacer support for a stable and consistent base

Alta Multipurpose Device

ELEVATE YOUR WORKFLOW

Alta is an all in one solution that quickly adapts to a wide range of setups, for a more user friendly and ergonomic experience.

- Combines functionality of multiple devices
 - Dependable and reproducible
 - Fast and efficient setups
 - Can be extended beyond end of couchtop for improved head and neck dosimetry
 - Lightweight-5.4 kg (12 lbs)
 - MR Safe, CT and treatment compatible
- See pages 34-36 for more details.



TotalRT All in One Platform

The TotalRT All in One Platform is designed to quickly adapt positioning and immobilization solutions to your clinical setup and treatment needs. The platform is indexable on a couchtop, creating an affordable all in one solution and allowing seamless transition between patient treatments.

See pages 37-38 for more details.



Overlays

MRI overlays are made of fiberglass with a foam core, have Prodigy and Interloc indexing options and are compatible with a three-pin Lok-Bar. Three-Pin Lok-Bars allow MR Safe and MR Conditional devices to be indexed to an MRI Overlay.



MRI OVERLAY FOR:	INDEXING STYLE	COMPATIBLE LOK-BAR	PART #
PHILIPS			
Panorama, 40 cm Wide (Only available from Philips)	Prodigy	MTIL3455 (2 included)	MTM3401
Ingenia Ambition, Ingenia Elition	Interloc	MTIL3352 (2 included)	MTM3404
GE			
Wide Bore (750w or 450w) with GEM	Interloc	MTIL3352 (1 included)	MTM3302
SIEMENS			
Magnetom Avanto, Magnetom Espree, Magnetom Symphony A Tim System, Magnetom Trio A Tim System	Prodigy	MTIL3454 (1 included)	MTM3000
Magnetom Verio	Prodigy	MTIL3454 (1 included)	MTM3001
Aera, Skyra, Vida, Prisma (with Type-S mask attachment)	Prodigy	MTIL3454 (1 included)	MTM3002
Aera, Skyra, Vida, Prisma (with Posifix mask attachment)	Prodigy	MTIL3454 (1 included)	MTM3003

INSIGHT MR Overlay & Coil Holders

INSIGHT

INSIGHT MR Overlay and Coil Holders are designed to enable MR imaging in the same position as treatment. Its thin design positions the patients closer to the scanner coils for improved MR imaging.

INSIGHT MR OVERLAY

Mounts to compatible Siemens MAGNETOM Aera, Skyra, Vida, and Sola tables allowing the use of MR compatible patient positioning devices during MR scanning for radiotherapy. The INSIGHT MR Overlay is compatible with Portrait head only Type-S thermoplastic masks.

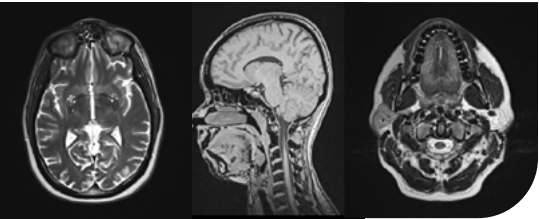
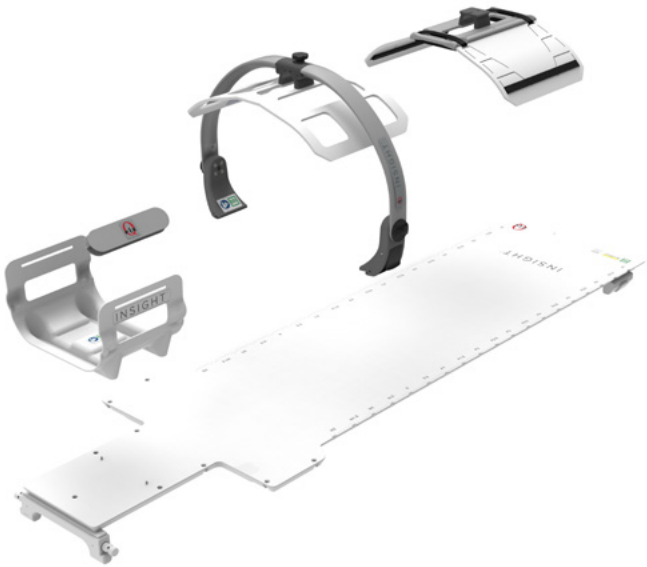
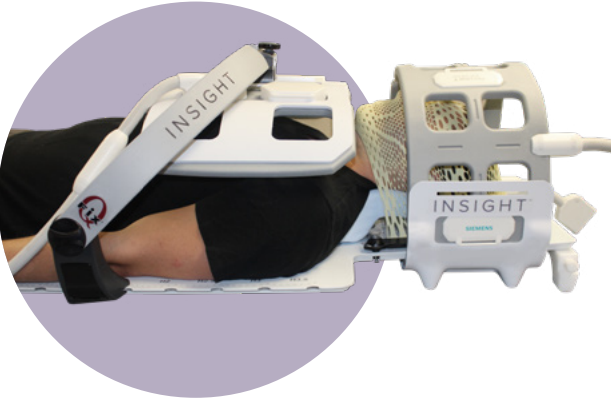
INSIGHT MR COIL HOLDERS

Intended to position coils for head and body imaging with the patient in the desired treatment position. Coil holders are available for Siemens MAGNETOM Aera, Skyra, Vida, and Sola scanners using the Flex 4, Body 6, and Body 18 coils. Please contact us for more details on compatibility with Siemens MR Systems.

NOW COMPATIBLE WITH HEAD & SHOULDER MASK

MR Overlay & Coil Holders Package

RT-4700-10



MR images of a healthy volunteer

Encompass 15-Channel Head Coil for MR Imaging

OPTIMIZED FOR USE WITH THE ENCOMPASS MR SRS IMMOBILIZATION SYSTEM

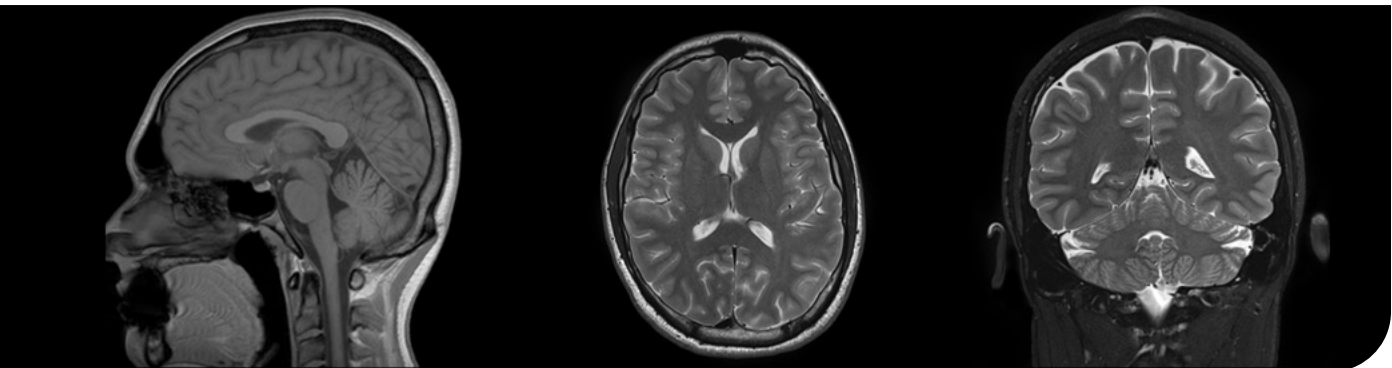
The Encompass 15-Channel Head Coil is specially designed to accommodate the high-precision positioning unique to the Encompass MR SRS Immobilization System.

The adjustable coil geometry locates the coil elements within millimeters of each patient's unique anatomy providing an optimized signal-to-noise ratio and delivering imaging information to support accurate SRS treatment planning when used with the Encompass MR SRS Immobilization System.

Immobilization in the Encompass SRS System offers motion reduction for increased visualization of fine details, reducing the need for repeated scans. MR images obtained with the Encompass SRS System can be used for SRS treatment planning, including MR-Only and MR Fusion Techniques.

Please note: Encompass Coil is used with the Encompass MR Device for Imaging Only. Encompass Coil is not for Treatment. The Encompass Device can be used for both imaging and treatment.

RT-5200-01 Encompass 15-Channel Head Coil



MRSeries Positioning Devices

HEAD & NECK



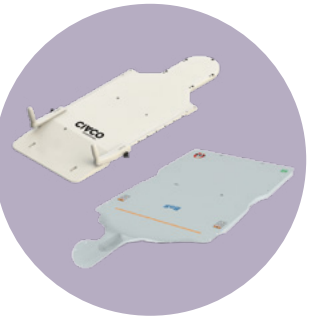
**Solstat
Immobilization System**
Page 102



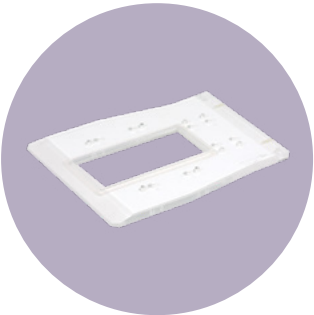
**Portrait MR Head
& Neck Device**
Page 79



MRI Type-S Overlay
Page 80



ProForm MR Overlay
Page 207



Acrylic Baseplates
Uni-frame 90
Posifix 95



**Polycarbonate
Headboard**
89



Thermoplastics
Type-S Pages 82-88
Uni-frame Pages 91-93
Posifix Pages 96-98
Pediatric Page 101
Precise Bite Page 105



**M.C.Inspire Baseplate
compatible with
MRIdian by ViewRay**
Page 103



**Customizable
Head Support**
Page 104



Headrests
Pages 109-114



**GrayDuck Oral
Positioning Stents**
Page 106

AccuForm Cushions
Page 107

MRSeries Positioning Devices

SRS/SRT

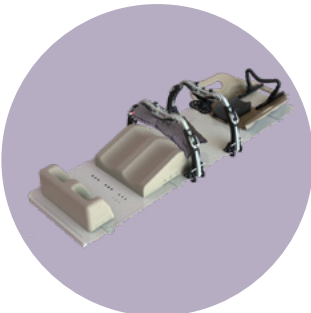


Encompass SRS MR Head & Neck Device
Page 61

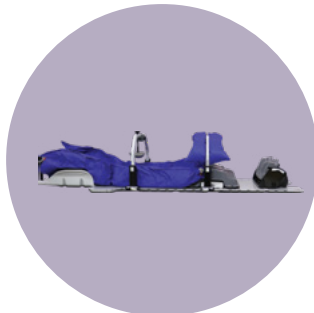


Solstice MR SRS Immobilization System
Page 65

SBRT, LUNG & ABDOMEN



Body Pro-Lok ONE
Page 46



Alta SBRT Immobilization
Page 51



ZiFix Traverse
Page 52



ZiFix
Page 54

BREAST & THORAX



C-Qual M Breastboard
Page 122



Access Supine MR Breast & Lung Treatment Device
Page 125

Access Prone G2 Breast Device
Page 133



Evolve Breastboard
Page 129



Wing Boards
Pages 123 & 136

MRSeries Positioning Devices

HIP & PELVIS



ThermFix & HipFix Immobilization Systems
Page 142



FlexLock Knee & Foot Supports
Page 146



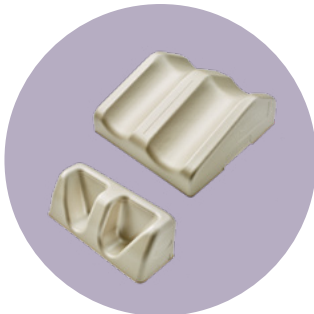
Combifix 3
Page 147



MR Bellyboard
Page 147

SofTouch Elite Bellyboard
Page 148

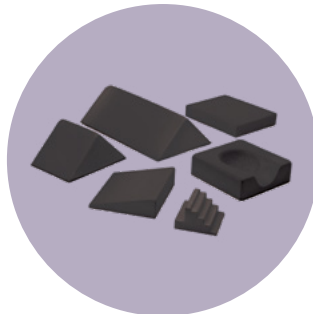
PATIENT CUSHIONS & POSITIONING AIDS



Kneefix 3 & Feetfix 3
Page 150



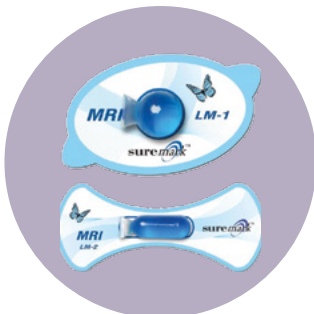
Vac-Lok and VacQfix Cushions
Pages 156-163



Multipurpose Support Cushions
167



SofTouch Couchtop Pads
19



LiquiMark MRI Markers
186

© 2023 CQ Medical. All rights reserved.

CQ Medical is a trademark of Medtec LLC. BoS, Fibreplast, Qfix, Positioning Patients for Life, Symphony are registered trademarks of Qfix Systems LLC.

CIVCO is a registered trademark of CIVCO Medical Solutions. Evolve, HipFix, Interloc, Medtec, Posicast, Posifix, ProtonSeries, and Uni-frame are registered trademarks of Medtec LLC.

AccuFix, AirDrive, AirDrive Caddie, AirDrive Trolley, Assure, Aqua-Brief, Aquaplast RT, BoS, Cantilever Board, Cosmas Cup, DoseMax, Encompass, FlexLock, Integrated Shim, InfinityEdge, InfinityLock, InkAlign, INSIGHT, Low-Pro, OneTouch, Portrait, ProBoard, Prone CSA Kit, QuickFix, RapidHeat, Shoulder-Loc, SingleStep, SofTouch, Stealth Beam, Tilt-Pro, Tilt-Pro Base, Variable Perf, Virtual Indexing, VacQfix, ZiFix, ZiFix Traverse are trademarks of Qfix Systems LLC. Accuform, Align, Bi-Axial Arm Support System, Body Pro-Lok, Body Pro-Lok ONE, CIVCO Radiotherapy, CIVCO RT, Clam-Lok, ClearVision, Combifix, ComfortCare, C-Qual, C-Qual M, Cybermark, DoseMatch, Feetfix, Fixator, FlexiCoil, FlexiMarc, FreedomView, FusionCoil, Helping Hands, IMRT Reinforced Thermoplastic, Iso-Align, Kneefix, Lok-Bar, Monarch, MRSeries, MultiFix, New Horizon, ONEBridge, ONEPlatform, PointCoil, PolyMark, Posiboard, Posirest, Positilt, Precise Bite, Prodigy, ProForm, Pronelok, Pron-pillo, PureVision, RediFoam, Solstice, Solstat, ThermFix, Thorawedge, TotalRT, trUpoint ARCH, Type-S, Universal Couchtop, Vac-Lok, Wing Board and ZENTEC are trademarks of Medtec LLC.

Varian, TrueBeam, Exact, Acuity, Ximatron, Calypso, HyperArc and Halcyon are trademarks of Varian Medical Systems. Lightspeed, HiSpeed, ProSpeed and Discovery are trademarks of GE Medical. Brilliance, AcQSim, Gemini Picker PQ 5000 are trademarks of Philips Medical Systems. SOMATOM, ZXT and TXT are trademarks of Siemens AG. MAGNETOM Aera, Skyra and Vida are trademarks of Siemens. Precise and Medical Intelligence I-Beam are trademarks of Elekta AB. Kevlar and Tyvek are trademarks of E.I. DuPont de Nemours and Company. Sharpie is a trademark of Sanford L.P. DecoColor is a trademark of Uchida of America, Corp. Pro-Tekt is a trademark of MEDRAD, INC. U.S.A. Formica is a trademark of the Formica Corporation. Suremark, Clearline, PortalMark, Visionmark, Powermark, Liquimark, and BeautyLine are registered trademarks of The Suremark Company. ShadowForm is a trademark of IZI Medical Products. Staph-Chek is a registered trademark of Morrison Medical. Bolx I and Bolx II are registered trademarks of Action Products. RectalPro is a trademark of QLRAD. SpringLoc is a trademark of SchureMed. FCT Embrace is a registered trademark of Fujifilm Medical Systems USA, Inc. GrayDuck Stents and GrayDuck Dart are trademarks of POLL Medical. Grip Rings is a trademark of VanArsdale Innovative Products, Inc. Spee-D-Mark is a trademark of PDC.

The following products or their accessories or components are patented or patent(s) pending in the US and/or elsewhere by Qfix Systems LLC or licensed by Qfix Systems LLC. Encompass, SRS Adapter, SRS Cushion Support, AirDrive Trolley, AirShuttle Devices, AirDrive Caddie, ZiFix, ZiFix Traverse, kVue Access 360 G2, Virtual Indexing, Integrated Shim, kVue, DoseMax, AccuFix, IntegraBite, Encompass 15-Channel Head Coil, and FlexLock. The following products or their accessories or components are patented or patent(s) pending in the US and/or elsewhere by Medtec LLC or licensed by Medtec LLC. Body Pro-Lok ONE, Body Pro-Lok, Evolve, Solstice, Solstat, ThermFix, trUpoint ARCH, Universal Couchtop Long Extension. These lists may not be all inclusive.

This catalog contains information about products which may or may not be available in particular countries. Each country has specific laws and regulations governing the commercialization of medical devices and the communication of information regarding medical devices in printed and digital media. Products appearing in this catalog or on our website may or may not have received approval, clearance, or marketing authorization by a governmental regulatory body in any particular country, or may have received approval, clearance, or marketing authorization for different indications and restrictions in different countries, or may be for investigational use only. A product's appearance in this catalog should not be construed as a solicitation or promotion for said product, nor any indication which is not authorized by the laws and regulations of the country where the reader resides. All products may not be licensed in accordance with Canadian law.



VISIONRT COMPATIBILITY

The following products have been identified as VisionRT Compatible: ClearVision & ClearVision 2 Head Only and Head, Neck & Shoulders, Solstice SRS & Solstat Immobilization Systems with ClearVision mask and Precise Bite, Encompass SRS Immobilization System with Assure Open View Fibreplast Head Only mask, Aquaplast RT Custom Bolus, Assure Open View Head, Neck & Shoulder mask.

- Vision RT is unable to comment on, nor make claims, about the immobilization rigidity, Dosimetric properties, clinical effectiveness, or patient alignment reproducibility when using these products.
- Compatibility is subject to users following vendor guidelines when using these products in conjunction with Surface Guided Radiotherapy systems, and subject to users following Vision RT's guidelines for drawing Regions of Interest for use in treatment.
- The vendor of the products is responsible for ensuring that users are in receipt of guidelines for using these products in conjunction with Surface Guided Radiotherapy systems. Vendors may change their guidelines from time to time without reviewing changes with Vision RT. Vision RT is not liable for misuse of the products.
- Vision RT makes no comment on, and is not liable for, suitability or otherwise of use of these products for the respective procedure(s) for which they are advertised or any other procedure.
- Purchasers are responsible for making their own choices as to the products selected by them.