



positioning
patients for life.®

SERVICE INSTRUCTIONS

2009191

Qfix MRI Locating Bar

Rubber Foot Replacement Guide

PURPOSE

Replace worn and/or damaged rubber feet on Qfix MRI Locating Bar.

COMPATABILITY TABLE

| Part Number | Part Name |
|---------------|-----------------------|
| RT-4551BARMRI | Qfix MRI Locating Bar |

ESTIMATED TIME TO COMPLETE

10–20 minutes hands-on

KIT CONTENTS

| Part Number | Quantity | Part Name |
|-------------|----------|-------------|
| 2001534 | 10 | Rubber Foot |
| 3002125 | 10 | Screw |
| 3001422 | 10 | Hex Nut |

REQUIRED TOOLS

- Wide Blade Flat Head Screwdriver
- Needle Nose Pliers

DIRECTIONS

RUBBER FOOT REMOVAL

1. Place MRI Locating Bar on a hard, flat surface with the rubber feet facing up.
2. To avoid injury, with one hand, use a firm grip on the MRI Locating Bar. **Keep hand away from the rubber feet.** Hold the bar steady.
3. Carefully, push needle nose pliers between rubber foot and hex nut to get a firm grip on the hex nut. (Fig. 1)



Fig. 1

4. Using the Flat head screwdriver, turn the screw counter-clockwise to loosen. (Fig. 2)

! NOTE ! Turning the screw may be difficult, as there is a thread locker on the hex nut threads.

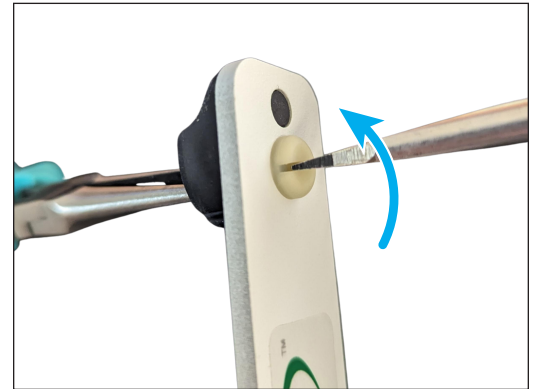


Fig. 2

5. Discard worn foot and hardware. Do not reuse. (Fig. 3)



Fig. 3

RUBBER FOOT INSTALLATION

1. Place a new hex nut into the hexagonal hole on the new rubber foot. (Fig. 4)

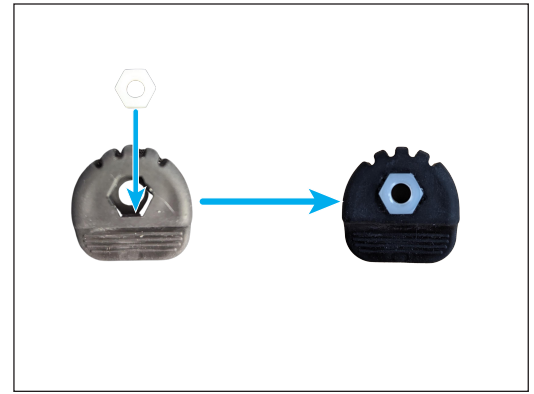


Fig. 4

2. Insert the new rubber foot into the holes as shown. (Fig. 5)

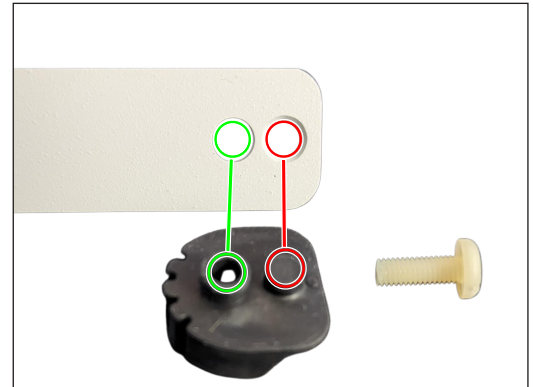


Fig. 5

3. Flip bar over. The rubber foot should be oriented as shown. (Fig. 6)

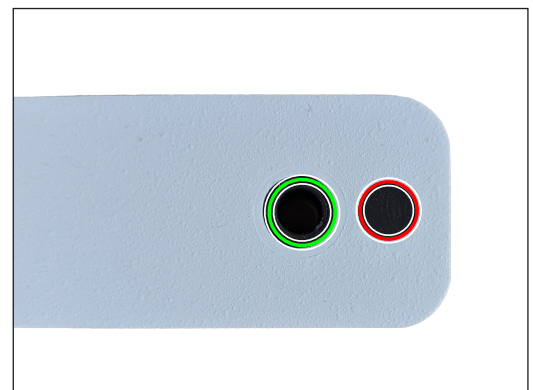


Fig. 6

RUBBER FOOT INSTALLATION CONTINUED

4. Insert the screw into the hole and tighten clockwise with Flat head screwdriver. The rubber will hold the hex nut. (Fig. 7)

! NOTE ! DO NOT OVERTIGHTEN.



Fig. 7

5. Continue to tighten the screw.
6. The rubber foot should be secured in place. Test the fit by wiggling the rubber foot to determine if it is secure. If the foot moves, tighten screw by $\frac{1}{4}$ turns until secure.
7. Repeat all steps for Rubber Foot Removal & Rubber Foot Installation for the opposite side of the MRI Locating Bar.

LOCATING BAR TESTING

1. Install the MRI Locating Bar with the new rubber feet, using the locating notches of your device.
2. The MRI Locating Bar should be completely flat against the device surface. (Fig. 8)



Fig. 8

3. Pull up gently on the red locating pin upwards.
4. The MRI Locating Bar should flex while the rubber foot remains in place.
5. Repeat steps 2–4 for the opposite side pin.

! NOTE ! If the MRI Locating Bar is loose, contact support@qfix.com for further assistance.

