



PRODUCT GUIDE & USER MANUAL

RT-5100-52 Applicator Clamp Holder, Rail Mounted

RT-5100-53 Applicator Clamp Holder, Post Mounted

 EC REP Advena Limited Tower Business Centre, 2nd Flr Tower Street, Swatar, BKR 4013 Malta	UK Responsible Person QServe Group UK, Ltd. 49 Greek Street Soho, London W1D 4EG United Kingdom	
	 Qfix 440 Church Rd, Avondale, Pennsylvania, USA +1 712-737-8688 www.CQmedical.com	CH REP Raditec Medical AG Schlossberg 5a 5454 Bellikon Switzerland

2009125_EN_1 / 2025-10

GENERAL PRECAUTIONS

⚠ WARNING STATEMENTS

! WARNING ! No modification of this equipment is allowed. If any part of this device experiences a catastrophic load, appears damaged or functions improperly, discontinue use immediately and contact CQ Medical at +1 712-737-8688 or support@CQmedical.com.

! WARNING ! Ensure that all locking knobs have been securely tightened before activating the AirDrive Trolley™ or AirDrive Caddie™, and transferring or moving of the AirShuttle™.

SERIOUS INCIDENTS

Please report any serious incidents (e.g. incidents which result in or have the potential to result in death or serious injury) to both CQ Medical and your country's Competent Authority.

⚠ MRI SAFETY INFORMATION

Non-clinical testing has demonstrated the **Applicator Clamp Holders** are MR Conditional. These devices may be used with an MR system meeting the following conditions:

- The **Applicator Clamp Holder**, Rail Mounted when attached to the **Lithotomy AirShuttle™** and leg extension may be placed in the bore of an MR system having a static magnetic field of 3T or less.
- Any attachments used with the **Applicator Clamp Holder** (e.g. applicators, clamps, stirrups) in an MR system must be MR Conditional or MR Safe for use in that system and used in accordance with their intended use.
- The **Applicator Clamp Holder**, Post Mounted when attached to the **Lithotomy AirShuttle™** may be placed in the bore of an MR system having a static magnetic field of 3T or less.
- Any attachments used with the **Applicator Clamp Holder** (e.g. applicators, clamps, stirrups) in an MR system must be MR Conditional or MR Safe for use in that system and used in accordance with their intended use.

! WARNING ! Recommended maintenance and service, as well as use of only CQ Medical-provided accessories, components, and replacement parts, are necessary to ensure the safety, performance, and MRI compatibility of the product(s), as well as to maintain applicable warranties.

! WARNING ! Use of unapproved MR accessories may result in:

- Injury to patient
- Patient burns
- Damage to equipment

Use only proven MR Safe or MR Conditional accessories, tested and approved for your MR system.

Consider the MR compatibility of accessories prior to use on your MR system.

! WARNING ! Maintenance and other service of CQ Medical products should never be performed in an MR environment.

WARNING LABELS & DESCRIPTIONS

Refer to CQmedical.com for a listing of symbols and their definitions.

INTENDED USE

The Symphony Patient Transport System is indicated to aid in the support, positioning, and transfer of a patient for procedures involving imaging, including MRI; and external beam radiation therapy treatment with electrons, photons or protons; and other procedures requiring transfer of a patient. The Symphony is designed to interface with other positioning devices, such as couchtops, inserts, thermoplastic masks, and positioning pads.

The **Applicator Clamp Holder** is an accessory that will be used with the **Lithotomy AirShuttle™** to enable the use of Brachytherapy Applicator Clamps. The Applicator Clamp Holder is intended to support industry standard Applicator Clamps to be used in transfer and treatment of patients undergoing brachytherapy and related imaging procedures.

! NOTE ! United States Federal law restricts this device to sale by or on the order of a physician.

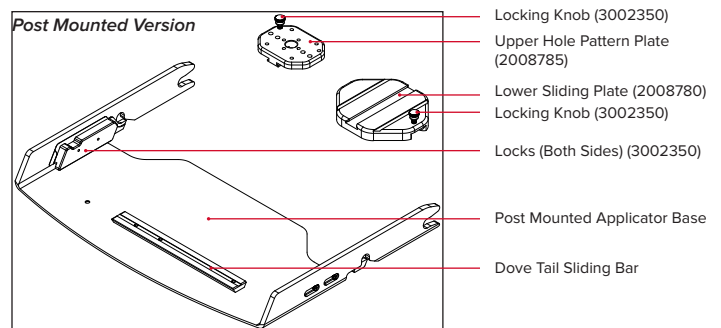
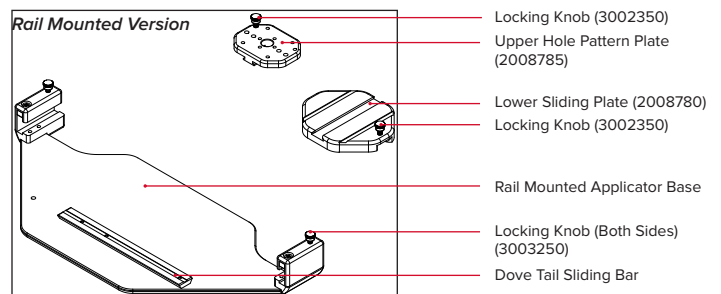
Patient Target Groups

Patients undergoing radiation therapy, diagnostic imaging procedures, or other procedures involving transfer of a patient.

Intended Users

The intended user for the products is a person qualified in accordance with the requirements of the regulatory region.

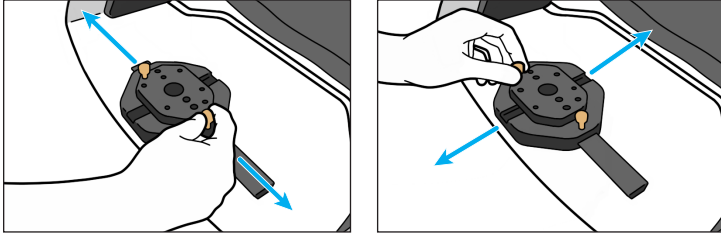
APPLICATOR CLAMP HOLDER



SETUP INSTRUCTIONS

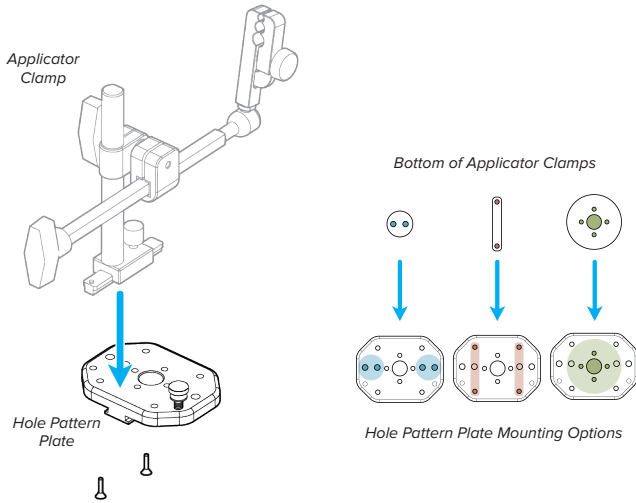
Adjusting the Upper and Lower Sliding Plates

To adjust the upper Hole Pattern Plate, loosen the Locking Knob on the upper plate and move longitudinally as desired. To adjust the lower Sliding Adaptor Plate, loosen the Locking Knob on the lower plate and move laterally as desired.



Installing an Applicator Clamp

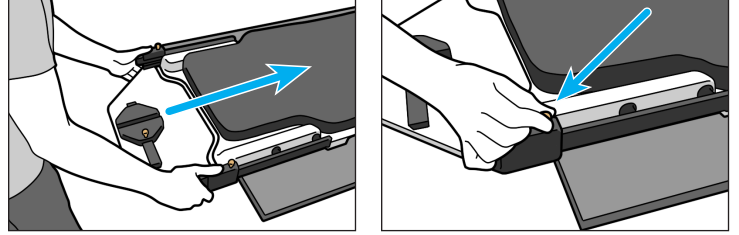
Attach the intended Applicator Clamp to the adaptable Hole Pattern Plate as shown below. See the mounting hole pattern graphic to understand which mounting holes to use for your intended Applicator Clamp. For more detailed information, refer to the individual clamp manufacturer's documentation for installation instructions.



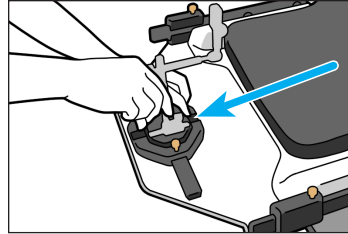
! NOTE ! Applicator Clamp shown not included.

RAIL MOUNTED INSTALLATION INSTRUCTIONS

1. Slide the Rail-Mounted Version Base onto the rail of the Lithotomy AirShuttle, position as desired and then tighten both Locking Knobs.

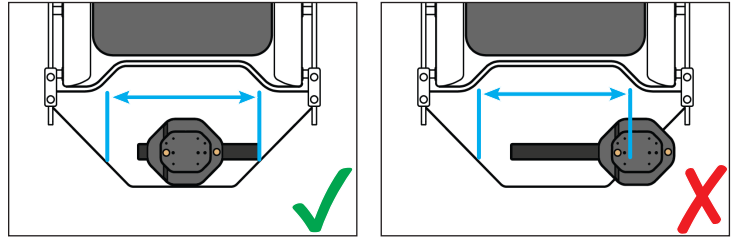


2. Install the upper Hole Pattern Plate, with the Applicator Clamp, by sliding it onto the lower Sliding Adaptor Plate.

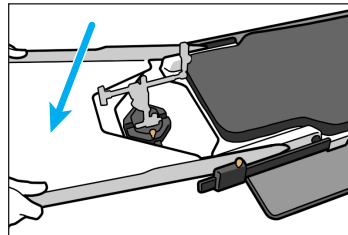


3. Ensure the lower Sliding Plate does not hang over the edge of the Base then tighten the Locking Knobs to fix the position.

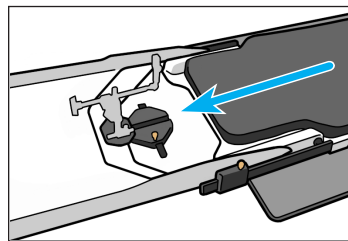
! NOTE ! To prevent collision, ensure both sliding plates are in the correct position prior to installing the Leg Extension.



4. Install the compatible Leg Extension by Aligning the front forks of the extension with the middle rail posts of the AirShuttle. Then lower the extension down so the notches of the extension rest on the inferior rail posts of the AirShuttle as shown below.

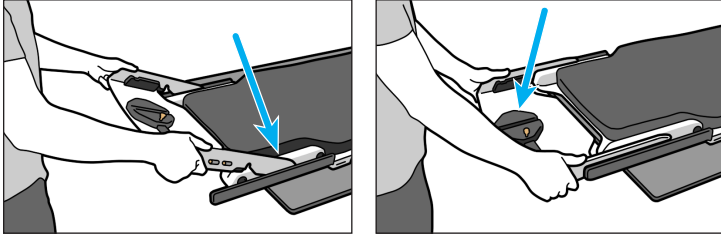


5. To remove the upper Hole Pattern Plate when the Leg Extension is installed, loosen the Locking Knob, and slide away from the AirShuttle as shown below.

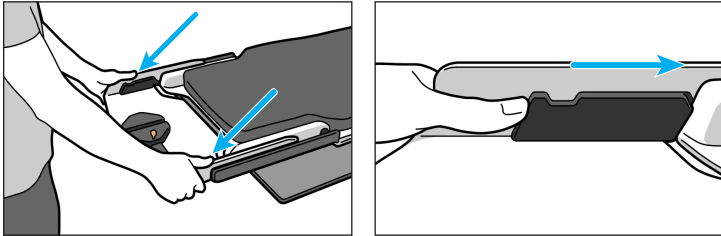


POST MOUNTED INSTALLATION INSTRUCTIONS

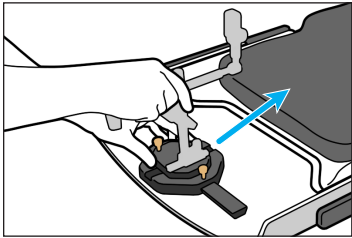
1. Align the front forks of the Post Mounted Version Base with the middle rail posts of the Lithotomy AirShuttle, then lower the Base down so the notches of the Base rest on the inferior rail posts of the Lithotomy AirShuttle as shown below.



2. To lock the Stand-off Mounted version of the holder to the Lithotomy AirShuttle, slide the locking mechanism on either side of the holder forward into the locked position.



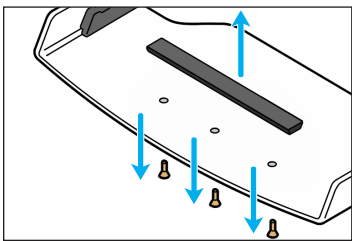
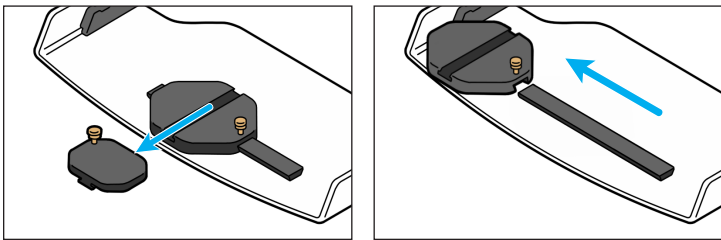
3. Install the upper Hole Pattern Plate, with the Applicator Clamp by sliding it onto the lower Sliding Adaptor Plate, then tighten the Locking Knobs to fix the position.



MAINTENANCE

DISASSEMBLING FOR CLEANING

To disassemble the Applicator Clamp Holder for cleaning, loosen the knobs on the upper and lower plates and then slide apart as shown below. Then to remove the Dovetail Sliding Bar, unscrew the 3 fasteners.



CLEANING THE SYSTEM

The device can be cleaned with a mild, non-abrasive cleaning or disinfecting solution. To clean, apply solution to clean cloth and wipe the surface. Visually inspect the device, if it is not clean, repeat the previous cleaning steps until visually clean. Use a clean cloth moistened with water to wipe the device to remove any cleaning agent residue. To dry, wipe the device with a clean, dry cloth. The following cleaning material has been tested and found to be appropriate for cleaning the device.

- Water
- Soap and Water

DISINFECTING

The following products are recommended. Refer to specific instructions from the chemical agent manufacturer.

- 10% Clorox® Bleach Solution
- Isopropyl Alcohol

PARTS LIST

3002350	Flared - Collar Knurled Head Thumb Screws ¼ - 20 x ¾ Brass
3002351	Phillips Flat Head Screw M6 x 1.00 - 16 mm Brass
3002423	Phillips Flat Head Screw M6 x 1.00 - 10 mm 316 SS
2008785	Hole Pattern Plate
2008780	Sliding Adaptor Plate
RT-5100-50-A-CO	Lithotomy AirShuttle Leg Extension A with Cut Out
RT-5100-50-B-CO	Lithotomy AirShuttle Leg Extension B with Cut Out
RT-5100-50-D-CO	Lithotomy AirShuttle Leg Extension D with Cut Out

AirDrive, AirDrive Trolley, AirDrive Caddie, Lithotomy AirShuttle, and AirShuttle are trademarks of Qfix. Clorox is a registered trademark of The Clorox Company.

