

INSTALLATION MANUAL

RT-4800-H30 Alta™ Opti-Handles, 30 cm (set of 2)

RT-4800-H45 Alta™ Opti-Handles, 45 cm (set of 2)

RT-4800-GL Alta™ Groin Lock Bar



EC REP

Advena Limited
Tower Business Centre, 2nd Flr
Tower Street, Swatara, BKR 4013
Malta

Made in the USA by

Qfix
440 Church Rd,
Avondale, Pennsylvania, USA
+1 484-720-6053 www.Qfix.com

GENERAL PRECAUTIONS

WARNING STATEMENTS

! WARNING ! NO MODIFICATION OF THIS EQUIPMENT IS ALLOWED. IF ANY PART OF THIS DEVICE EXPERIENCES A CATASTROPHIC LOAD, APPEARS DAMAGED OR FUNCTIONS IMPROPERLY, DISCONTINUE USE IMMEDIATELY AND CONTACT QFIX AT +1 484-720-6053 OR TECHSUPPORT@QFIX.COM.

MRI SAFETY INFORMATION

MR Non-clinical testing has demonstrated the **Opti-Handles, 30 cm**, for use with **Alta Multipurpose Device** and the **Opti-Handles, 45 cm**, for use with **Alta Multipurpose Device** are MR Safe.

MR Non-clinical testing has demonstrated the **Groin Lock Bar** is MR Conditional. Once the conditions for the **Groin Lock Bar** are met, the **Groin Lock Bar** may be used in an MR system meeting the following conditions:

- **Static magnetic field of 3T or less.**

WARNING LABELS & DESCRIPTIONS

Refer to Qfix.com for a listing of symbols and their definitions.



MR SAFE

An item that poses no known hazards resulting from exposure to any MR environment. MR Safe items are composed of materials that are electrically non-conductive, nonmetallic and nonmagnetic.

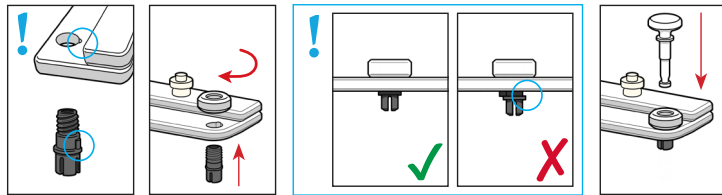


MR CONDITIONAL

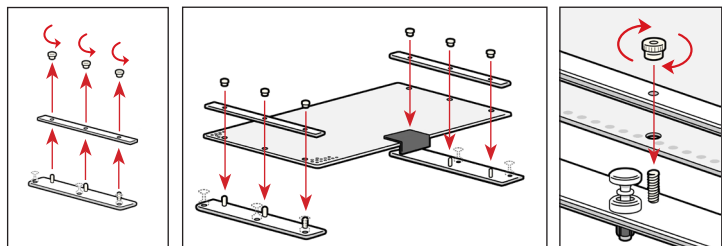
An item with demonstrated safety in the MR environment within defined conditions. These conditions are defined in the MRI Safety Information section.

INSTALLATION INSTRUCTIONS

ASSEMBLING THE OPTI-HANDLES



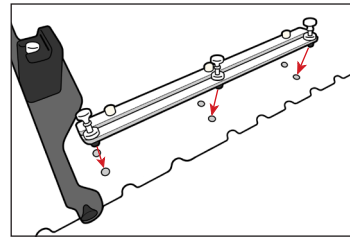
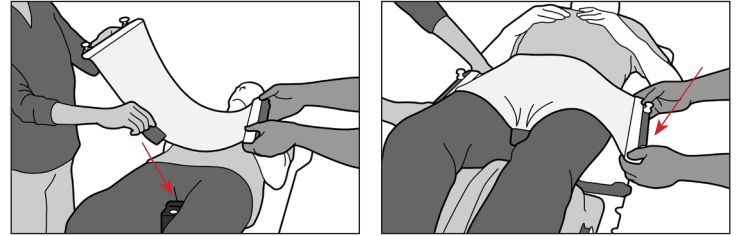
INSTALLING THE THERMOPLASTIC



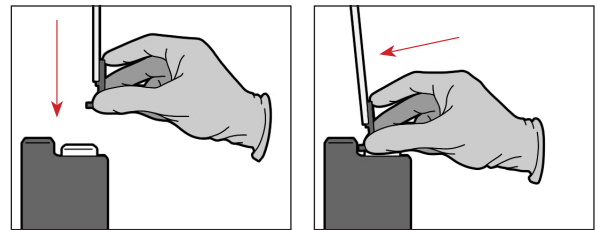
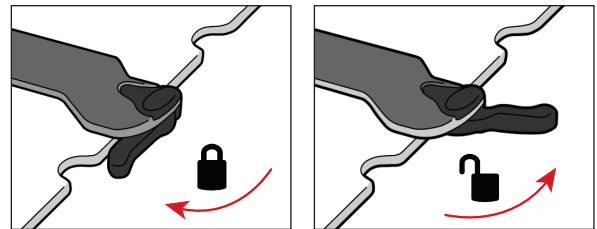
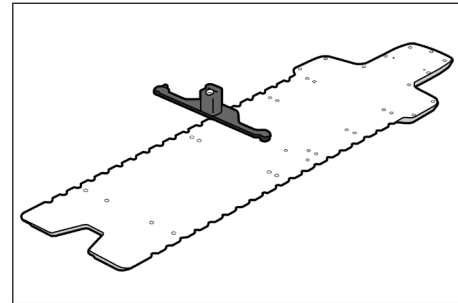
! NOTE ! Refer to the Product Guide and User Manual for the Pelvis & Breast Thermoplastics (P/N 2008084) for thermoplastic softening and molding instructions, product features, specifications, warnings, cautions, and other general precautions related to the use of the Aquaplast RT™ & Fibreplast® Thermoplastics.

FORMING THE THERMOPLASTIC

If using the Groin Lock, refer to the section, "Groin Lock Bar".



USING THE GROIN LOCK BAR



! NOTE ! Refer to the Product Guide and User Manual for the Alta Multipurpose Device (P/N 2008272) for operating instructions, patient setup sheet, product features, specifications, warnings, cautions, and other general precautions related to the use of the Alta Multipurpose Device.

Alta and Aquaplast RT are trademarks of Qfix.
Fibreplast® is a registered trademark of Qfix.