



SERVICE INSTRUCTIONS

RT-5100-38

AirShuttle™ Non-Slip Screw Kit



Made in the USA by

Qfix

440 Church Rd, Avondale, Pennsylvania, USA


+1 484-720-6053 www.Qfix.com

AirDrive, AirDrive Trolley, AirShuttle, and Lithotomy AirShuttle are trademarks of Qfix.

Clorox is a registered trademark of The Clorox Company.

GENERAL PRECAUTIONS

WARNING STATEMENTS

 **! WARNING ! RECOMMENDED MAINTENANCE AND SERVICE, AS WELL AS USE OF ONLY QFIX-PROVIDED ACCESSORIES, COMPONENTS, AND REPLACEMENT PARTS, ARE NECESSARY TO ENSURE THE SAFETY, PERFORMANCE, AND MRI COMPATIBILITY OF THE PRODUCT(S), AS WELL AS TO MAINTAIN APPLICABLE WARRANTIES.**

 **! WARNING ! ALL MAINTENANCE AND SERVICE PERFORMED ON THE AIRDRIVE™ SYSTEM, AIRSHUTTLE DEVICES, AND ALL ACCESSORIES SHOULD BE CONDUCTED OUTSIDE MRI ENVIRONMENTS.**

! NOTE ! Refer to the Product Guide and User Manual for the AirDrive Trolley™ (P/N 2005112) and to the Product Guide and User Manual for the Lithotomy AirShuttle™ (P/N 2007804) for operating instructions, product features, specifications, warnings, cautions, and other general precautions related to the use of the AirDrive System.

WARNING LABELS & DESCRIPTIONS

Refer to Qfix.com for a listing of symbols and their definitions.

BRACHYTHERAPY NON-SLIP FEATURE INSTALLATION

SUMMARY

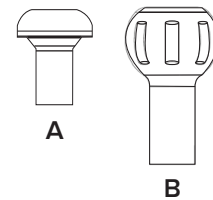
This installation manual covers the installation or removal and replacement of the non-slip features on the underside of the Lithotomy AirShuttle (RT-5100-05). All necessary tools and components are included in this service kit.

Estimated Completion Time: 30 Minutes

MATERIALS NEEDED

AirShuttle Non-Slip Screw Kit: RT-5100-38

- A. Brachytherapy Non-Slip Screws x 6
- B. Non-Slip Feature Installation and Removal Tool x 1



PROCEDURE

1. Flip the AirShuttle over the handles until the bottom of the device is exposed.

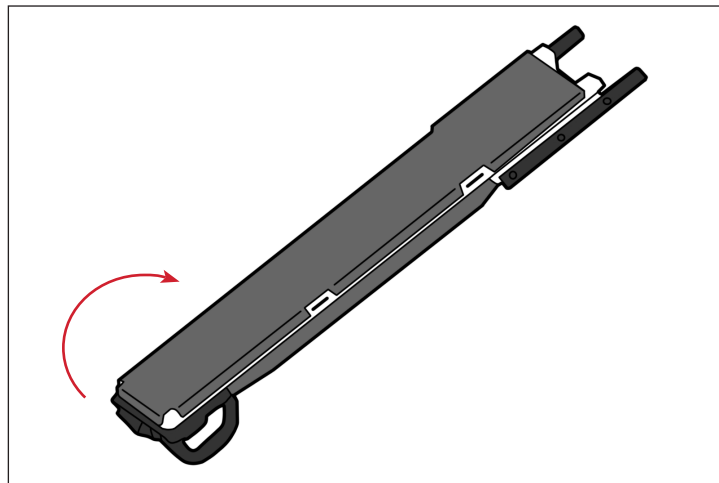


Fig. 1

BRACHYTHERAPY NON-SLIP FEATURE INSTALLATION

2. To remove the Non-Slip Screws, press the Installation/Removal Tool firmly against the Non-Slip Screw and twist counter-clockwise until the Non-Slip Screw is free. Discard the extracted Non-Slip Screw. Repeat as necessary for other Non-Slip Screws.

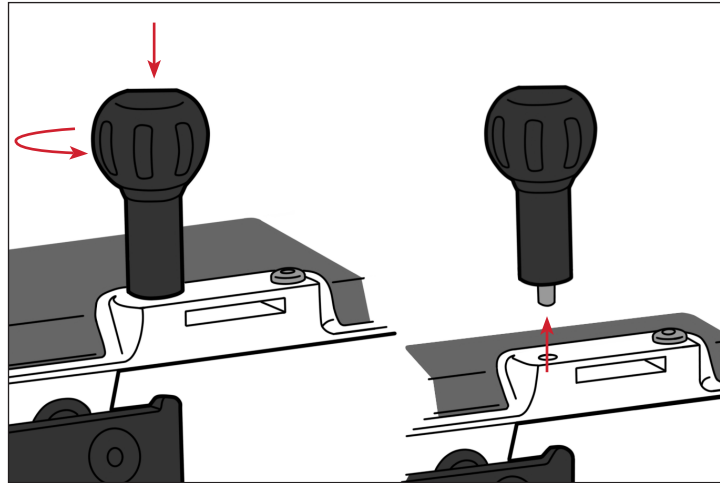


Fig. 2

PROCEDURE

3. By hand, thread the Non-Slip Screws into the 4 holes located near the accessory rails.

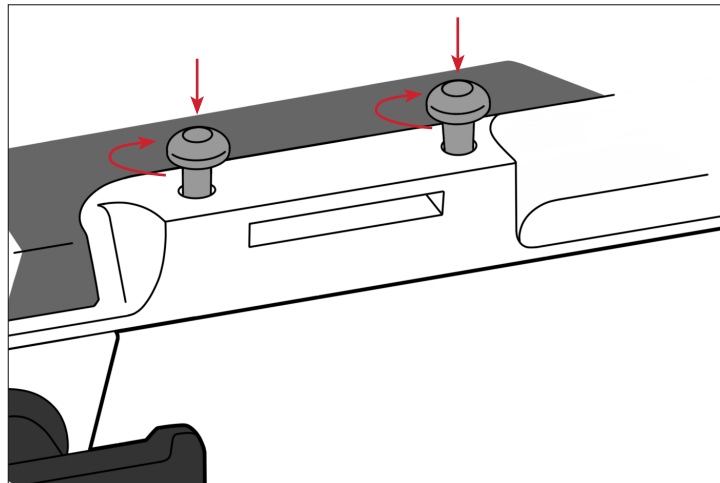


Fig. 3

BRACHYTHERAPY NON-SLIP FEATURE INSTALLATION

- Using the Installation/Removal Tool, press firmly on the head of the screw and twist clockwise until the tool touches the device, then remove tool.

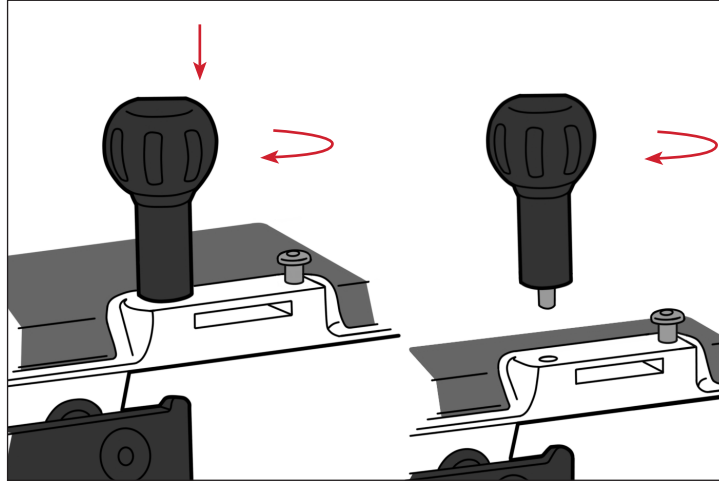


Fig. 4

! NOTE ! The Non-Slip Screw head should sit flush with the bottom of the AirShuttle (Fig. 5). If it does not sit flush, use the Installation/Removal Tool to continue twisting clockwise until the Non-Slip Screw sits flush.

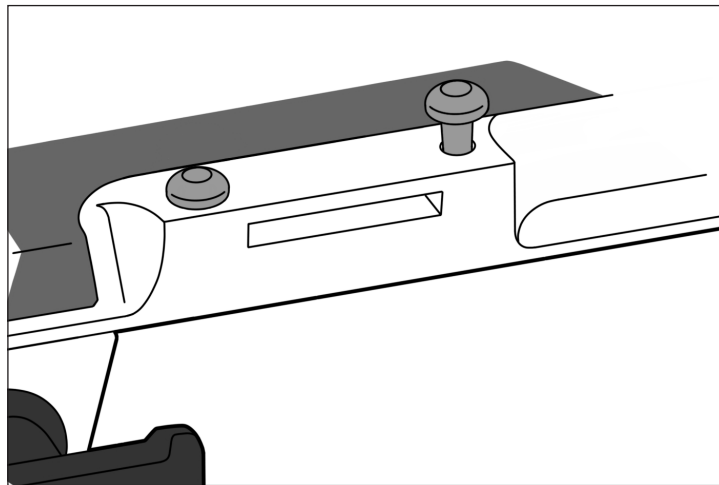


Fig. 5

- Repeat steps 3–4 on any remaining Non-Slip Screws.
- Return the AirShuttle to its normal position by flipping the device back over its handles.



440 Church Road
Avondale, PA 19311 USA
www.Qfix.com

☎ +1 484.720.6053 / 800.526.5247

🖨 +1 610.268.0588 / 800.831.8174

✉ sales@Qfix.com

2008224_EN_B
2022-01