



positioning  
patients for life.®

# ADDENDUM

RT-4546AA & RT-4546AW

Arm & Wrist Supports  
*for Use with the Access™ Supine*





<div>EC</div> <div>REP</div>		Advena Limited Tower Business Centre, 2nd Flr Tower Street, Swatar, BKR 4013 Malta	<div> Made in the USA by Qfix</div> <div>440 Church Rd, Avondale, Pennsylvania, USA +1 484-720-6053 <a href="http://www.Qfix.com">www.Qfix.com</a></div>
------------------------------	--	---	---

Access is a trademark of Qfix.

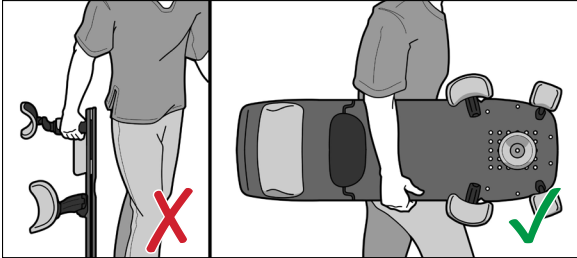
# GENERAL PRECAUTIONS

## WARNING STATEMENTS

**! WARNING ! NO MODIFICATION OF THIS EQUIPMENT IS ALLOWED. IF ANY PART OF THIS DEVICE EXPERIENCES A CATASTROPHIC LOAD, APPEARS DAMAGED OR FUNCTIONS IMPROPERLY, DISCONTINUE USE IMMEDIATELY AND CONTACT QFIX AT +1 484-720-6053 OR [TECHSUPPORT@QFIX.COM](mailto:TECHSUPPORT@QFIX.COM).**

**! WARNING ! DO NOT ALLOW PATIENT TO ADJUST POSITION USING THE ARM AND WRIST SUPPORTS.**

**! WARNING ! NEVER LIFT OR CARRY THE DEVICE BY HOLDING THE ARM OR WRIST SUPPORTS.**



## TRAPPING ZONES

- Trapping zones may occur when adjusting the Arm Support or Wrist Support height.
- Trapping zones may occur when adjusting the Arm Support or Wrist Support angle.

# OPERATING INSTRUCTIONS

## SETUP

### ARM SUPPORT

1. To attach the Arm Support pull on Rotation Lever and insert into one of the two locations (marked with “X” and “Y”). (Fig. 1)
2. To adjust the Rotation of the Arm Support, pull on Rotation Lever, and rotate the Arm Support to the desired angle, and then release. (Fig. 2 & 3)
3. To adjust the height, push up on the Arm Support, and it will ratchet into place. (Fig. 4)
4. To lower the Arm Support press in on the button and slide the housing along the base to the desired position. (Fig. 5)
5. To adjust the length of the arm, depress the button located under the support pad and slide along the arm, releasing the button once in the desired position. (Fig. 6, 7 & 8)

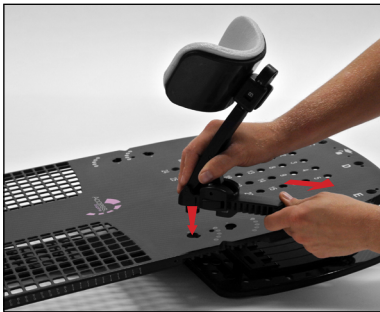


FIG. 1

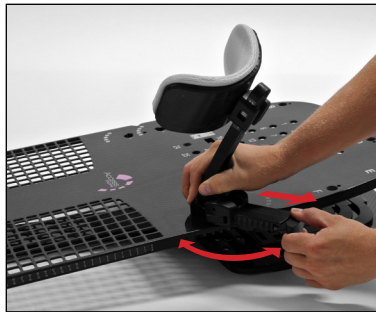


FIG. 2



FIG. 3



FIG. 4

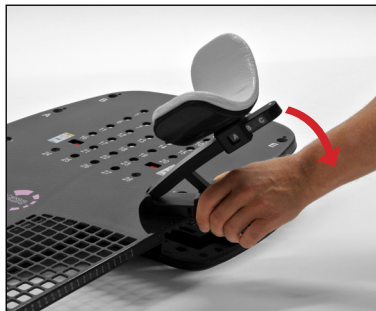


FIG. 5

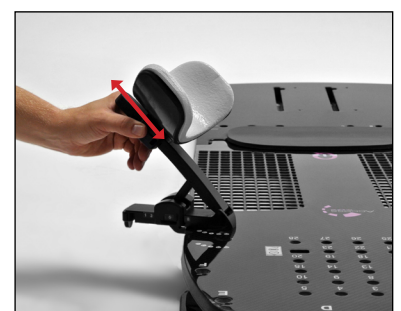


FIG. 6



FIG. 7



FIG. 8

# OPERATING INSTRUCTIONS

## SETUP

### WRIST SUPPORT

1. To attach the Wrist Support, align both pegs on the bottom of the Wrist Support with the two corresponding holes in the Patient Surface. (Fig. 9)
2. Twist the lower portion of the Wrist Support clockwise until it locks into place. (Fig. 10)
3. To reposition the upper portion of the Wrist Support, turn the knob counter-clockwise to loosen. (Fig. 11)
4. Swivel the upper portion to the desired position, then tighten the knob by turning it clockwise. (Fig. 12)
5. To reposition in a different location, turn the bottom portion of the Wrist Support counter-clockwise, until unlocked, remove the Wrist Support and repeat steps 1–2.



FIG. 9



FIG. 10



FIG. 11

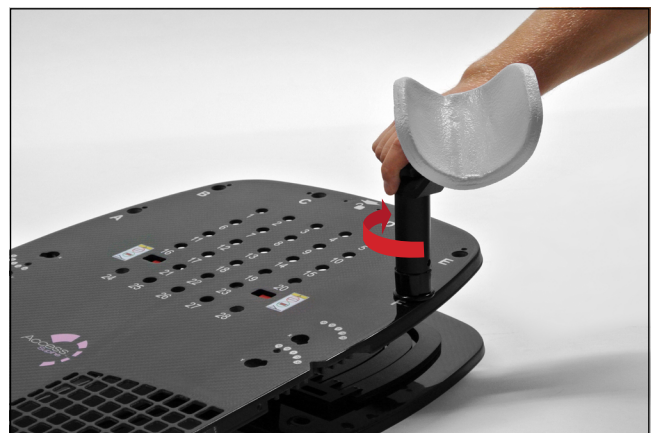


FIG. 12

# OPERATING INSTRUCTIONS

## REMOVAL

### **RT-4546AA — ARM SUPPORT**

1. Pull on Rotation Lever, and rotate the Arm Support to the unlock position.
2. While pulling on Rotation Lever, lift the Arm Support out of the locating hole.

### **RT-4546AW — WRIST SUPPORT**

1. Turn the bottom portion of the Wrist Support counter-clockwise, until unlocked,
2. Lift the Wrist Support from the locating holes.

## PARTS LIST

### **RT-4546AA — Arm Support**

- 2005353 – Foam Arm Cup Pad, Wrap-around
- 2006857 – O-ring, 1.5" – Pack of 10

### **RT-4546AW — Wrist Support**

- 2005386 – Foam Wrist Cup Pad, Wrap-around

# SETUP SHEET

RT-4546: Access Supine Breast & Lung, RT-4546MRI: Access Supine MR Breast & Lung,  
RT-4546-01: Access Supine Breast, or RT-4546-02: Access Supine Breast & Lung without Grid

Patient Name:

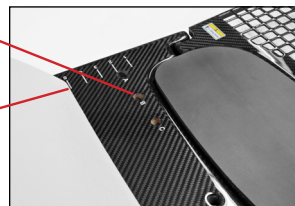
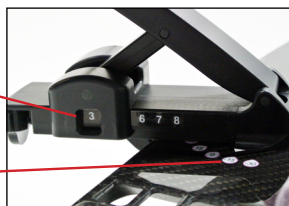
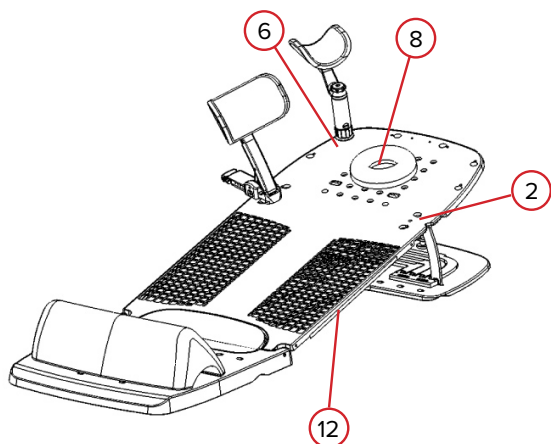
Patient ID #:

Setup by:

Physician:

Date:

Comments:



1. Used with the ArmShuttle: **Yes** **No** (if yes, use ArmShuttle Setup page and skip to 8)
2. Location of Arm Supports (select one)—Patient's Left: **X** **Y** Patient's Right: **X** **Y**
3. Angle of Arm Supports (range): Patient's Left Patient's Right
4. Height of Arm Supports (number 1–8): Patient's Left Patient's Right
5. Length of Arm Supports (select one): Patient's Left: **A** **B** **C** Right Side: **A** **B** **C**
6. Location of Wrist Supports (letter from A to H): Patient's Left Patient's Right
7. Angle of Patient Surface (select one): **0°** **5°** **7.5°** **10°** **12.5°** **15°** **20°** **25°**
8. Location of head rest (number 1–28):
9. Is a Bottom Stopper used? **Yes** **No** If yes, what setting? (number 1–8)
10. Indexed to simulation or treatment table? **Yes** **No** If yes, Index notch setting
11. Locating bar pin location (select one): **A** **B** **C**
12. Side marking laser location:



440 Church Road  
Avondale, PA 19311 USA  
[www.Qfix.com](http://www.Qfix.com)

+1 484.720.6053 / 800.526.5247

+1 610.268.0588 / 800.831.8174

[sales@Qfix.com](mailto:sales@Qfix.com)