



positioning  
patients for life.®

# PRODUCT GUIDE & USER MANUAL

RT-4546-03

Portrait™ Head Only Mask Adapter for  
Access™ Supine Breast Device

RT-4546-04

Portrait™ Head & Neck Mask Adapter for  
Access™ Supine Breast Device

RT-4546-05

Opti-Handle™ Thermoplastic Adapter for  
Access™ Supine Breast Device

# GENERAL PRECAUTIONS


## WARNING STATEMENTS

**! WARNING ! NO MODIFICATION OF THIS EQUIPMENT IS ALLOWED. IF ANY PART OF THIS DEVICE EXPERIENCES A CATASTROPHIC LOAD, APPEARS DAMAGED OR FUNCTIONS IMPROPERLY, DISCONTINUE USE IMMEDIATELY AND CONTACT QFIX AT +1 484-720-6054 OR TECHSUPPORT@QFIX.COM.**

## TREATMENT BEAM ATTENUATION

Treatment through any device will lead to an increase in skin dose. Thermoplastic masks will attenuate a radiotherapy beam and increase skin dose. Attenuation and increased skin dose should be taken into account during planning and treatment.

## MR SAFETY INFORMATION

 Non-clinical testing has demonstrated that **RT-4546-04 Portrait™ Head & Neck Mask Adapter for Access™ Supine Breast Device**, **RT-4546-03 Portrait™ Head Only Mask Adapter for Access™ Supine Breast Device**, and **RT-4546-05 Opti-Handle™ Thermoplastic Adapter for Access™ Supine Breast Device** are MR Safe. **RT-4546-04 Portrait™ Head & Neck Mask Adapter for Access™ Supine Breast Device**, **RT-4546-03 Portrait™ Head Only Mask Adapter for Access™ Supine Breast Device**, and **RT-4546-05 Opti-Handle™ Thermoplastic Adapter for Access™ Supine Breast Device** may be used in an MR environment.

- The **RT-4546-04 Portrait™ Head & Neck Mask Adapter for Access™ Supine Breast Device**, **RT-4546-03 Portrait™ Head Only Mask Adapter for Access™ Supine Breast Device**, and **RT-4546-05 Opti-Handle™ Thermoplastic Adapter for Access™ Supine Breast Device** must be used with the MR Safe version of the **Access™ Supine (RT-4546MRI)** in accordance with its intended use prior to scanning.
- The MR Safe version of the **Access™ Supine (RT-4546MRI)** is clearly labeled with the following symbol:



## WARNING LABELS & DESCRIPTIONS

Refer to [Qfix.com](http://Qfix.com) for a listing of symbols and their definitions.



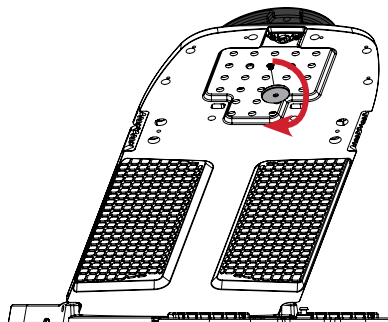
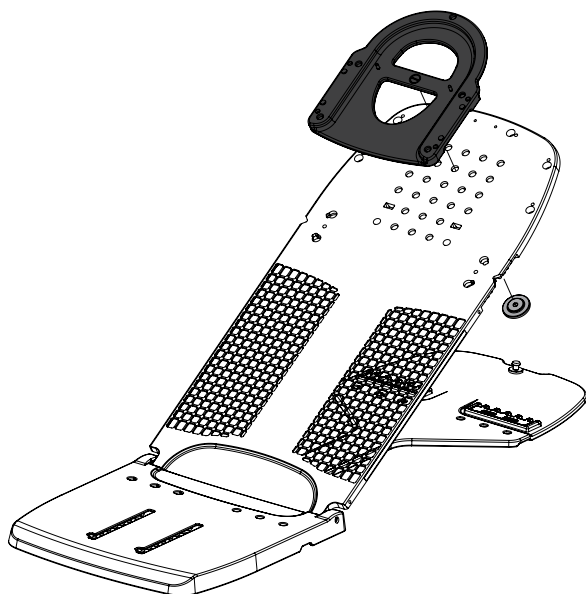
### MR SAFE

An item that poses no known hazards resulting from exposure to any MR environment. MR Safe items are composed of materials that are electrically non-conductive, nonmetallic and nonmagnetic.

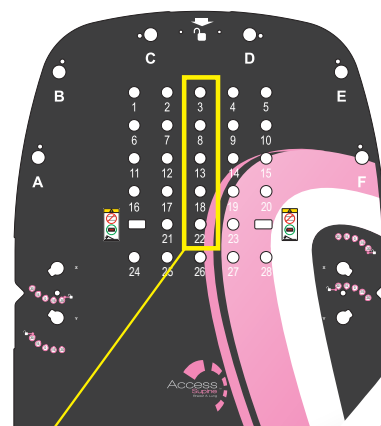
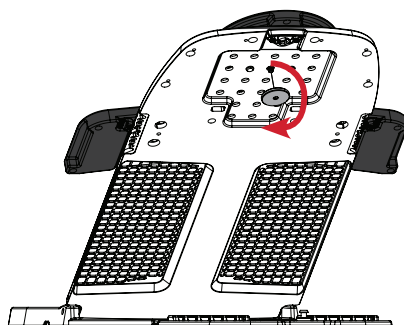
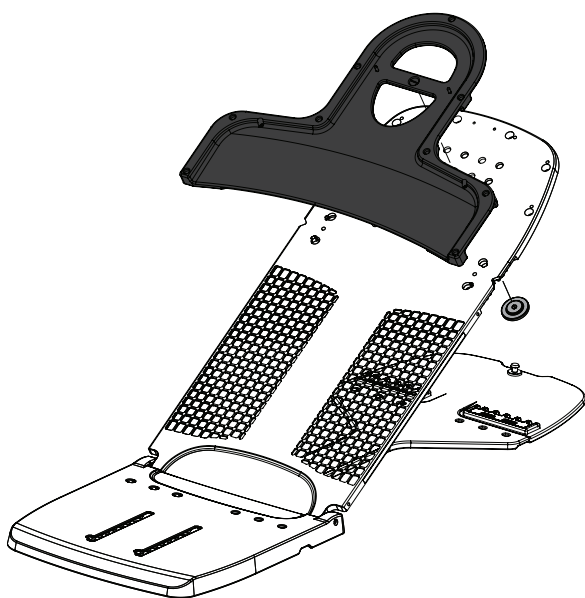
# OPERATING INSTRUCTIONS

## SET UP

### Head Only



### Head & Shoulder

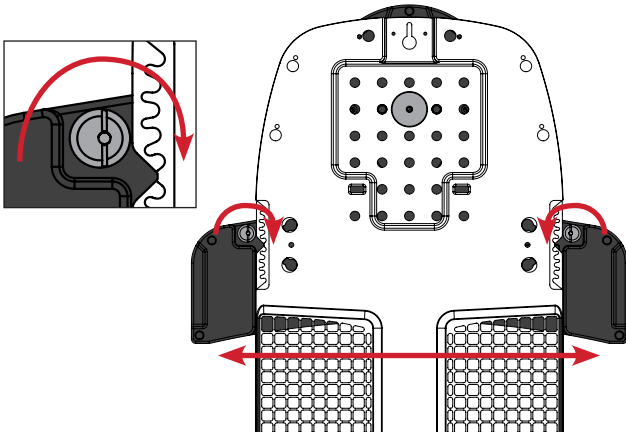


Fasten the Portrait™ Mask Adapter to the Access™ Supine using hole 3, 8, 13, 18, or 22.

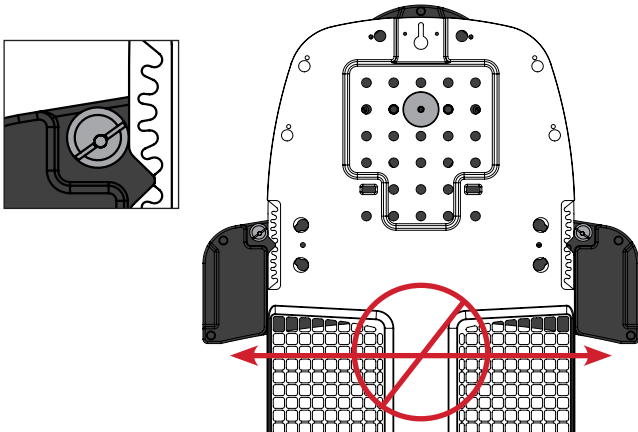
# OPERATING INSTRUCTIONS

ADJUST IF NECESSARY TO ELIMINATE MOVEMENT

Twist to Tighten



Locked

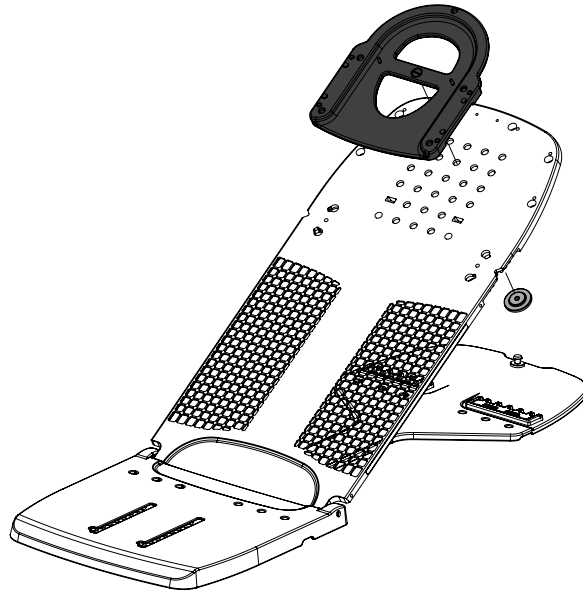
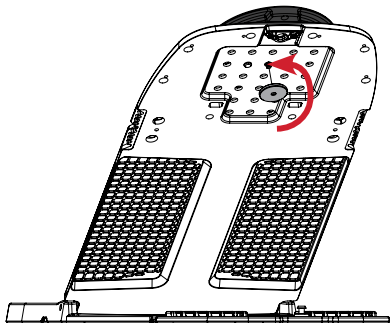




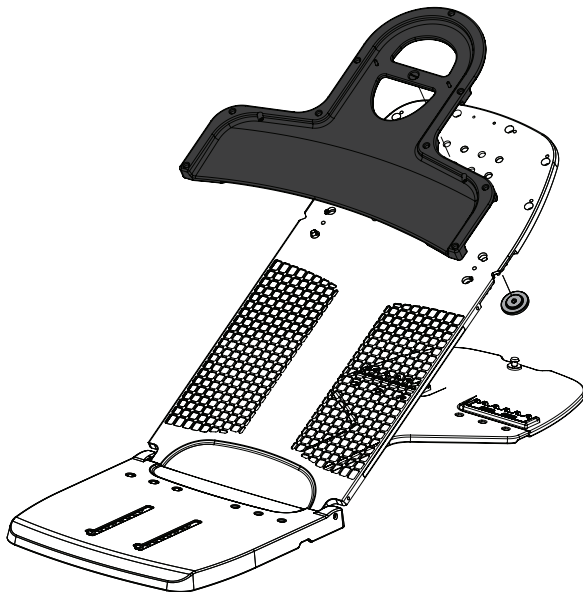
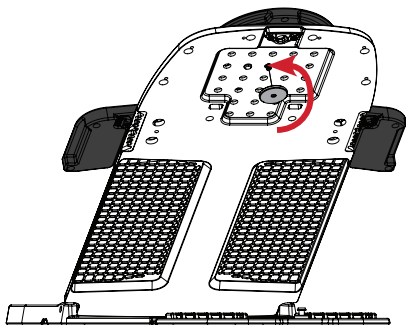
# OPERATING INSTRUCTIONS

## REMOVAL

### Head Only



### Head & Shoulder

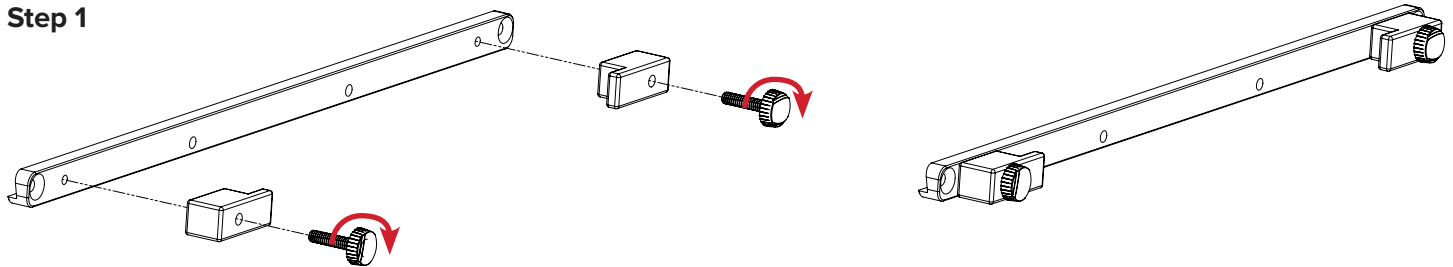


# OPERATING INSTRUCTIONS

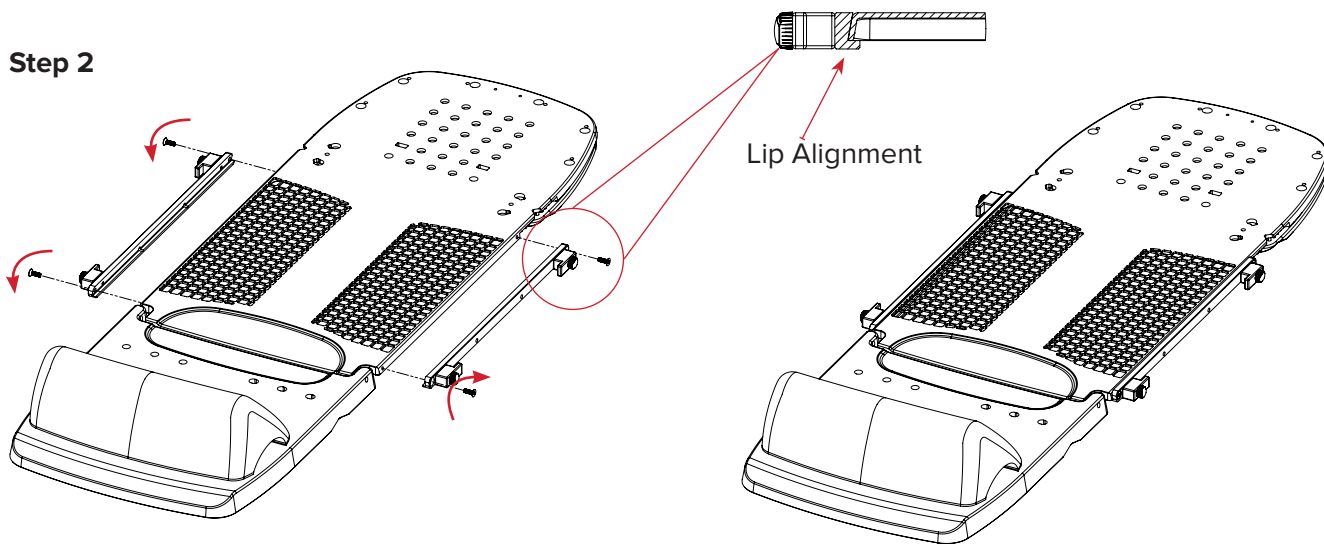
## SET UP

### Opti-Handle™ Thermoplastic Adapter

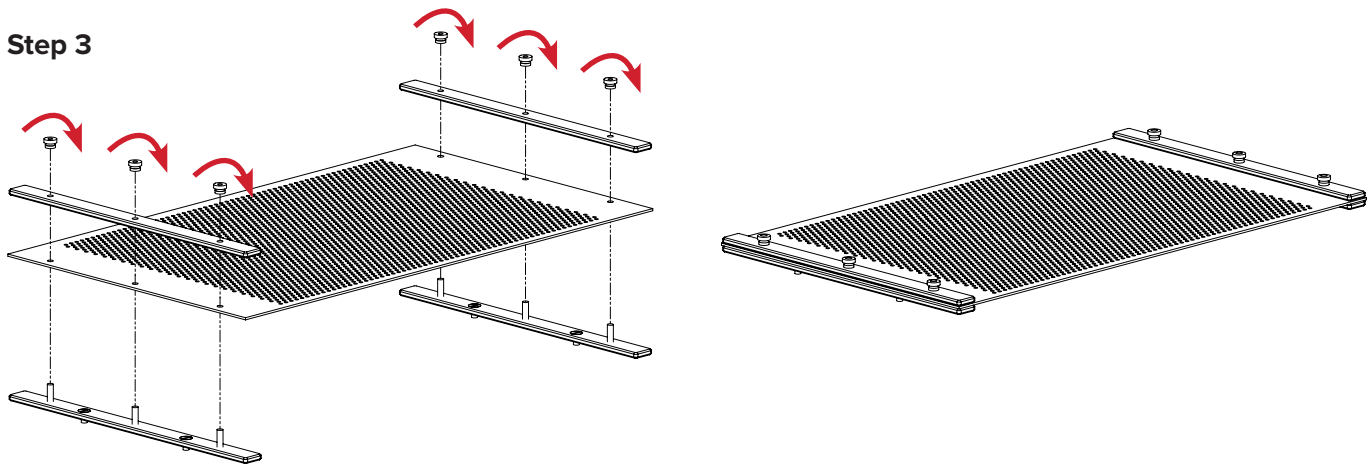
#### Step 1



#### Step 2



#### Step 3



# OPERATING INSTRUCTIONS

## SET UP

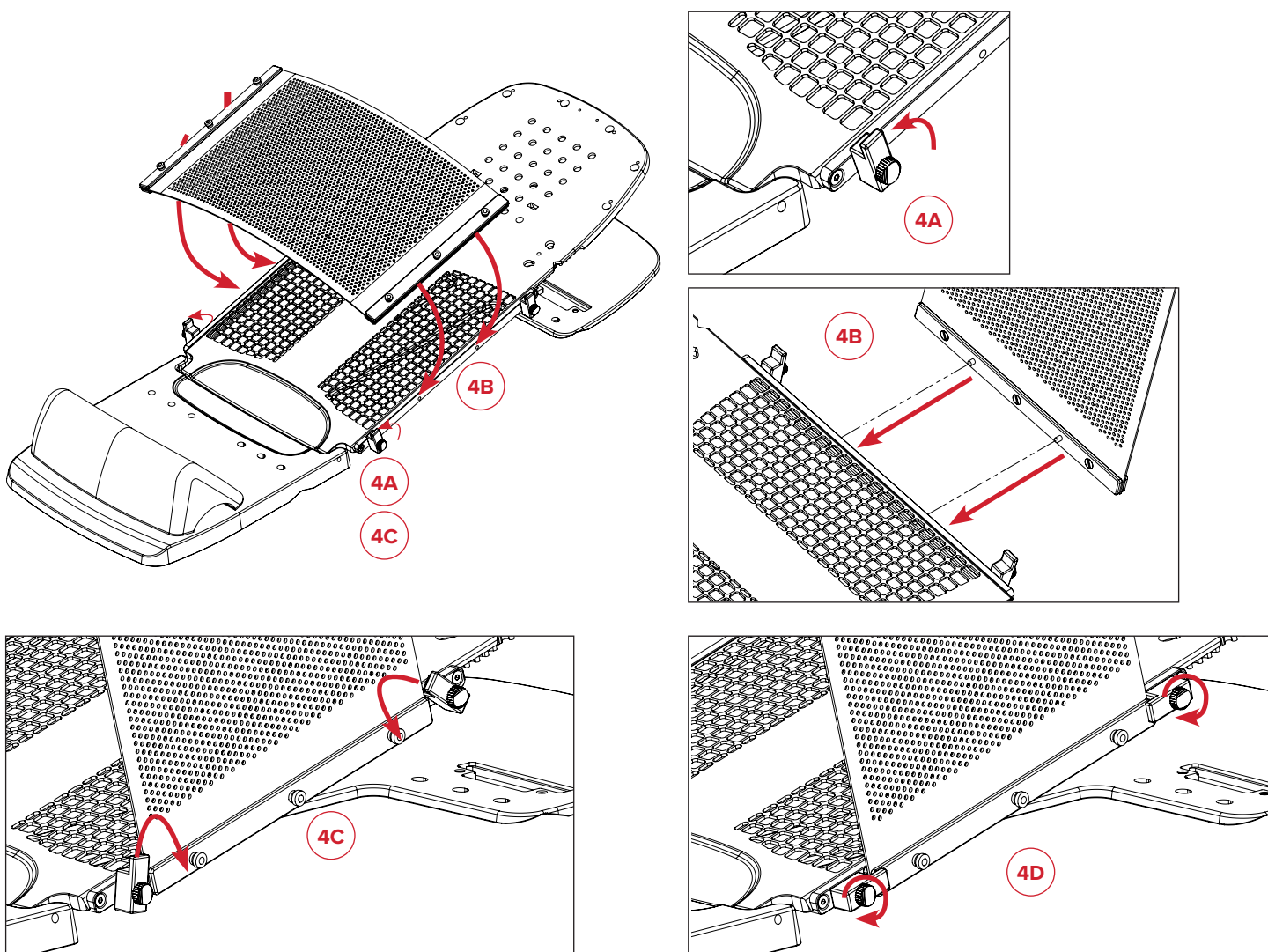
### Step 4

Set Up Patient on the Access Supine Breast Device.

**! NOTE !** Refer to the Product Guide and User Manual for the Access Supine (P/N 2004394) for operating instructions, product features, specifications, warnings, cautions, and other general precautions related to the use of the Access Supine Breast device.

Soften the thermoplastic (RT-1783P3) with attached Opti-Handles (RT-4454-14).

Complete steps 4A, 4B, 4C, and 4D on both sides of the thermoplastic.



# OPERATING INSTRUCTIONS

## REMOVAL

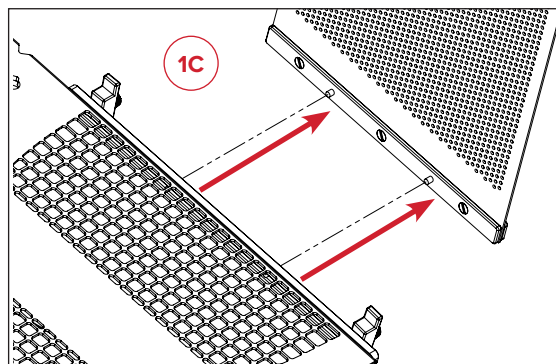
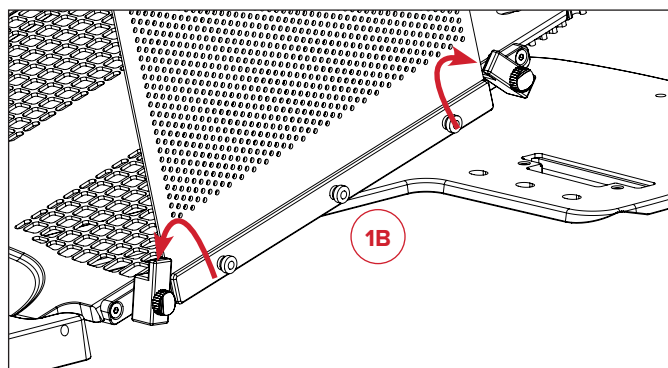
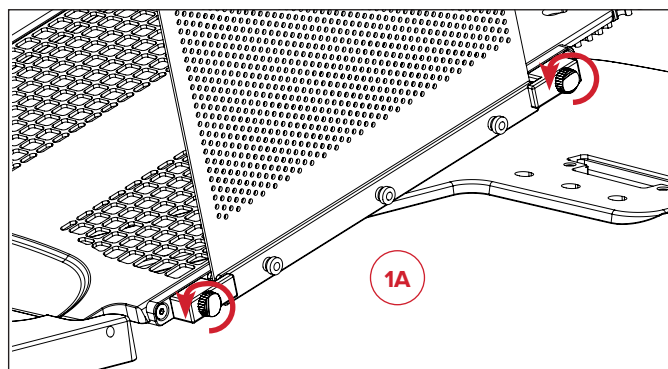
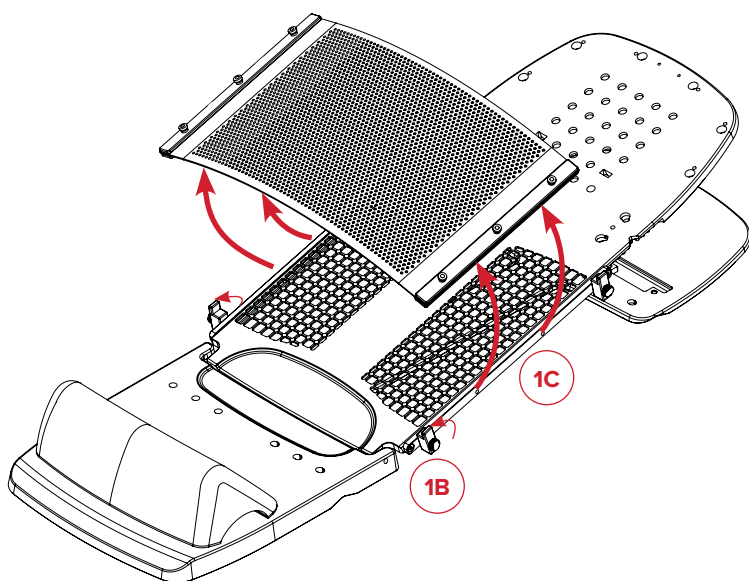
### Opti-Handle™ Thermoplastic Adapter

#### Step 1

Complete steps 1A, 1B, and 1C on both sides of the thermoplastic.

Remove Patient from the Access Supine Breast Device.

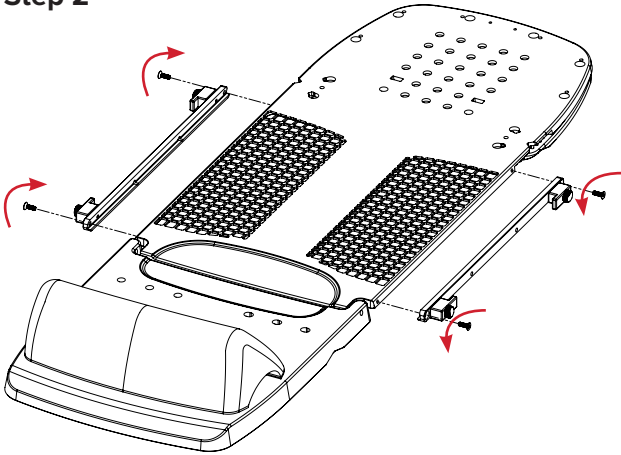
**! NOTE !** Refer to the Product Guide and User Manual for the Access Supine (P/N 2004394) for operating instructions, product features, specifications, warnings, cautions, and other general precautions related to the use of the Access Supine Breast device.



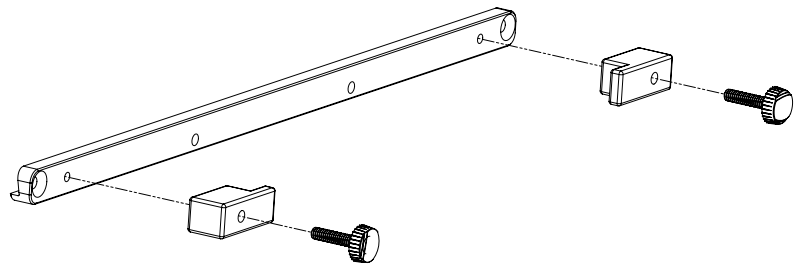
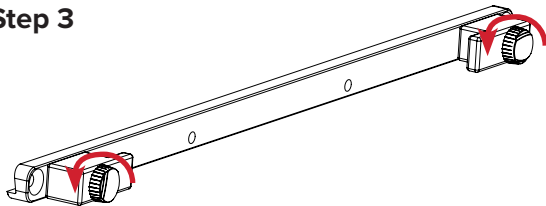
# OPERATING INSTRUCTIONS

## REMOVAL

### Step 2



### Step 3



# PARTS LIST

## **RT-4546-03 & RT-4546-04**

Compatible with Portrait™ S Frame Masks

## **RT-4546-05**

Compatible with RT-1783P3, Aquaplast RT® Sheet, 12" x 18", 2.4 mm, Perf

Compatible with RT-4454-14, 35.56 cm (14 inch) Opti-Handles, set of 2





440 Church Road  
Avondale, PA 19311 USA  
[www.Qfix.com](http://www.Qfix.com)

☎ +1 610.268.0585 / 800.526.5247

📠 +1 610.268.0588 / 800.831.8174

✉ [sales@Qfix.com](mailto:sales@Qfix.com)