



PRODUCT GUIDE & USER MANUAL

RT-5100 AirDrive Trolley™

 <p>EC REP Advena Limited Tower Business Centre, 2nd Flr Tower Street, Swatar, BKR 4013 Malta</p>	<p>UK Responsible Person QServe Group UK, Ltd. 49 Greek Street Soho, London W1D 4EG United Kingdom</p>
 <p>Made in the USA by Qfix 440 Church Rd, Avondale, Pennsylvania, USA +1 484-720-6053 www.Qfix.com</p>	<p>CH REP Raditec Medical AG Schlossberg 5a 5454 Bellikon Switzerland</p>

2005112_EN_J / 2024-01

GENERAL PRECAUTIONS

! WARNING STATEMENTS

! WARNING ! No modification of this equipment is allowed. If any part of this device experiences a catastrophic load, appears damaged or functions improperly, discontinue use immediately and contact Qfix at +1 484-720-6053 or tech.support@qfix.com.

! WARNING ! Follow your local regulations for disposal.

SERIOUS INCIDENTS

Please report any serious incidents (e.g. incidents which result in or have the potential to result in death or serious injury) to both Qfix and your country's Competent Authority.

! SAFETY INFORMATION

The AirDrive Trolley has been designed to be operated by two people.

! WARNING ! The maximum safe working load for the AirDrive Trolley is 226 kg (500 lbs). Refer to the Instructions for Use of Receiving Systems and the AirShuttle for their maximum safe working loads. DO NOT exceed the lowest load rating.

! WARNING ! Use caution when moving the AirDrive Trolley to avoid patient injury. Extreme care has been taken to minimize trapping zones and other hazards associated with the system. However, potential trapping zones include:

- Between the AirShuttle and trolley top when loading and unloading the patient
- Between the siderail and trolley top when raising or lowering the siderails
- Between the AirDrive Trolley and Receiving System e.g. CT, MR, Linac, etc..

! WARNING ! Ensure all accessories including AirShuttle Transfer Handles are secured to the AirShuttle prior to use.

The safe working load of the IV pole is 11.5 kg (25 lbs).

! WARNING ! To maintain MRI compatibility, use only the Airdrive trolley IV POLE.

! CAUTION ! Avoid tugging on hoses / monitor lines while transferring / transporting.

! CAUTION ! To avoid collisions, prior to adjusting the height of the AirDrive Trolley, ensure that the path is clear. Adjust the height of the AirDrive Trolley to that of the receiving system.

! CAUTION ! Horizontal trapping zones exist. Check for appendages that may be in the way of the horizontal trapping zone.

! WARNING ! AirShuttle Transfer Handles are MR conditional. Only use in a static magnetic field of 3T or less. DO NOT place in the bore of an MR system.

ENVIRONMENTAL CONDITIONS

Operating

- Temperature: 10°C to 40°C (50°F to 104°F)
- Humidity: 10% to 90% non-condensing
- Atmospheric: 700–1060 hPa

Storage

- Temperature: 0°C to 50°C (32°F to 122°F)
- Humidity: 0% to 95%
- Atmospheric: 700–1060 hPa

! MRI SAFETY INFORMATION

Non-clinical testing has demonstrated the **AirDrive Trolley** is MR Conditional. This device may be used with an MR system meeting the following conditions:

- Static magnetic field of 3T or less.
- The MR system MRI table must be fixed or docked in place prior to patient transfers taking place.
- The **AirDrive Trolley** must be moved past the 160 mT (1600 G) boundary of the MRI scanner prior to scanning. If the spatial gradient of the magnetic field in your room configuration is not known, remove the trolley from the MR room prior to scanning.

Non-clinical testing has demonstrated the **AirShuttle Transfer Handles** are MR Conditional. These devices may be used with an MR system meeting the following conditions:

- Static magnetic field of 3T or less.
- The **AirShuttle Transfer Handles** must be removed from the **AirShuttle** prior to placing the device into the bore of an MR system.

Non-clinical testing has demonstrated the **AirDrive Trolley IV Pole** is MR Conditional. This device may be used with an MR system meeting the following conditions:

- Static magnetic field of 3T or less.
- The **AirDrive Trolley IV Pole** must remain installed on the **AirDrive Trolley** at all times in an MR environment.

Non-clinical testing has demonstrated the **AirDrive™ Charging Cable** is MR Conditional. This device may be used with an MR system meeting the following conditions:

- Static magnetic field of 3T or less.
- The **AirDrive Trolley** must not be on charge in the MRI room when imaging. Doing so could result in MR image artifacts.

! WARNING ! Recommended maintenance and service, as well as use of only Qfix-provided accessories, components, and replacement parts, are necessary to ensure the safety, performance, and MRI compatibility of the product(s), as well as to maintain applicable warranties.

! WARNING ! Use of unapproved MR accessories may result in:

- Injury to patient
- Patient burns
- Damage to equipment

Use only proven MR Safe or MR Conditional accessories, tested and approved for your MR system.

Consider the MR compatibility of accessories prior to use on your MR system.

! WARNING ! Maintenance and other service of Qfix products should never be performed in an MR environment.

ELECTRONIC EMISSIONS

The AirDrive Trolley is classified as Emissions Class A and has been tested to Immunity to RF Electromagnet Fields at a level of 3 V/m per IEC 60601-1-2. The AirDrive Trolley is an electronic device that may interfere with other electronic devices. If the AirDrive Trolley interferes with other electronic devices, move the trolley away from affected device(s).

! WARNING ! The AirDrive Trolley may be affected by emissions from nearby electronic devices, including devices adjacent to or placed on the trolley. Emissions may affect control of trolley functions such as the pillars and/or blower, rendering them inoperable. In the event that control of trolley functions are impaired, separate the trolley and the emitting devices by a sufficient distance. If electronic devices are to be used on or adjacent to the trolley, this equipment and the trolley should be observed to verify that they are operating normally.

! WARNING ! Use of accessories and cables other than those specified or provided by Qfix could result in increased electromagnetic emission or decreased electromagnetic immunity of this equipment and result in improper operation.

! WARNING ! Portable RF communications equipment (including peripherals such as antenna cables and external antennas) should be used no closer than 30 cm (12 inches) to any part of the Airdrive Trolley. Otherwise, degradation of the performance of the trolley could result.

ADDITIONAL PRECAUTIONS

The use of additional immobilization devices may create additional trapping zones not described in this Product Guide and User Manual.

Use of the charging cable and the transfer hose may create a tripping hazard. Take care in managing the charging cable and the transfer hose to avoid potential tripping and snag scenarios.

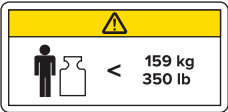



Ensure charging system of AirDrive Trolley is connected to equivalent receptable marked 'Hospital Only' or 'Hospital Grade'.

The MR system MRI table must be fixed or docked in place prior to patient transfers taking place.

Ensure that the transfer hose is properly seated in both the AirShuttle Air Inlet as well as the hose connection point in the trolley handle prior to use of the air source.

WARNING LABELS & DESCRIPTIONS

Refer to Qfix.com for a listing of symbols and their definitions.

	MAXIMUM SAFE WORKING LOAD
	TWO PERSON LIFT
	TRAPPING ZONES Trapping zones may exist and are indicated by this symbol.
	ELECTRICAL CAUTION To prevent injury, this system's electronics and batteries should be serviced by trained personnel only.
	EMERGENCY STOP The Emergency Stop switch halts all electromechanical functions of the AirDrive Trolley.
	STEER LOCK The steer lock allows the trolley to be guided in a straight line.
	BRAKE The brake prevents the trolley from moving in any direction.

INTENDED USE

The AirDrive Trolley is indicated to aid in the support, positioning, and transfer of a patient for procedures involving imaging, including MRI; and external beam radiation therapy treatment with electrons, photons or protons; and other procedures requiring transfer of a patient. The AirDrive Trolley is designed to interface with other positioning devices, such as couchtops, inserts, thermoplastic masks, and positioning pads.

! NOTE ! United States Federal law restricts this device to sale by or on the order of a physician.

Patient Target Groups

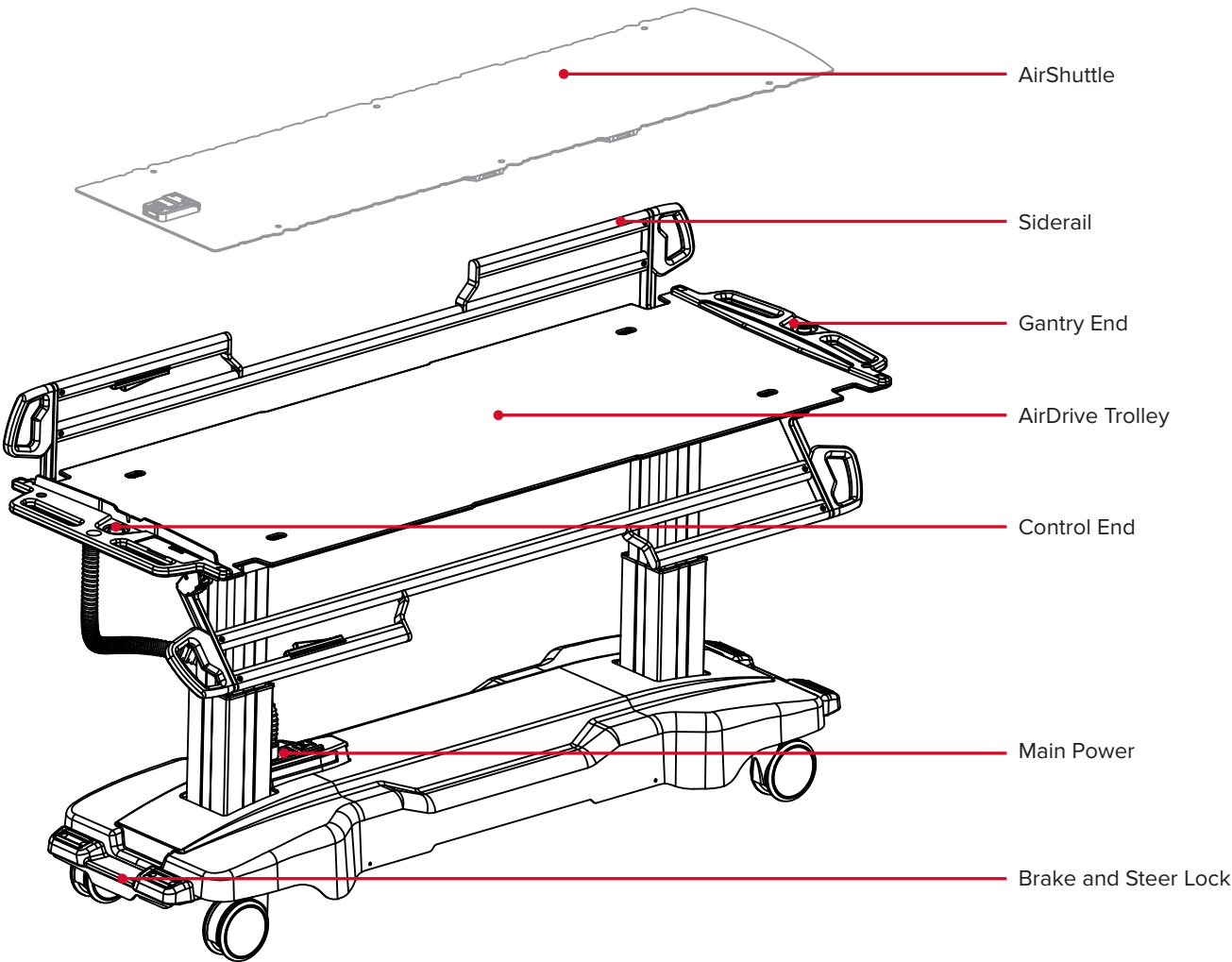
Patients undergoing radiation therapy, diagnostic imaging procedures, or other procedures involving transfer of a patient.

Intended Users

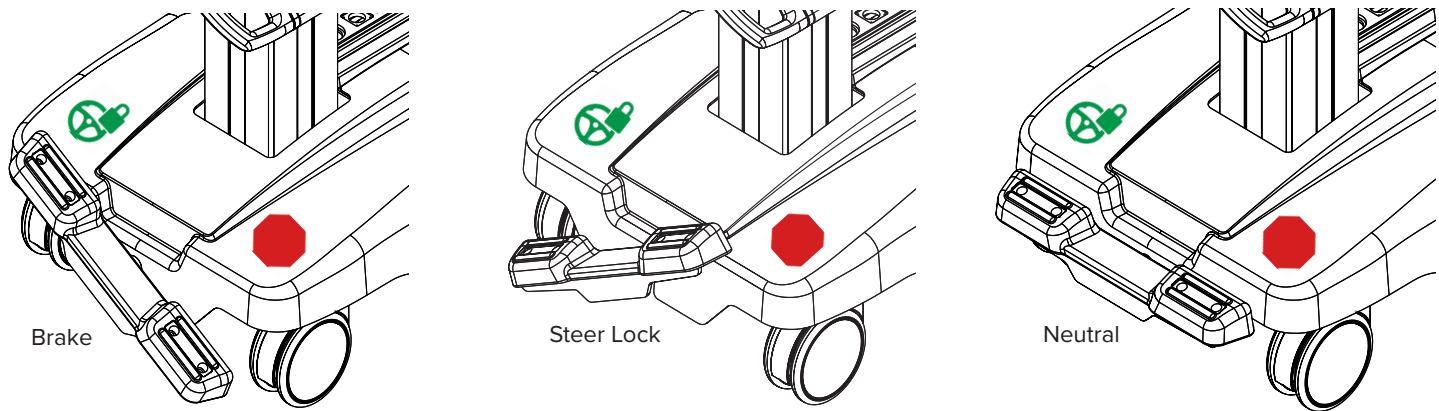
The intended user for the products is a person qualified in accordance with the requirements of the regulatory region.

GETTING TO KNOW YOUR AIRDRIVE TROLLEY

AIRDRIVE TROLLEY

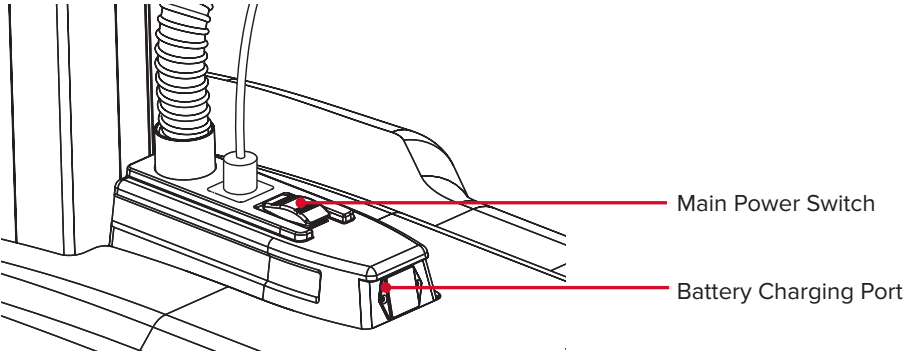


BRAKE AND STEER LOCK

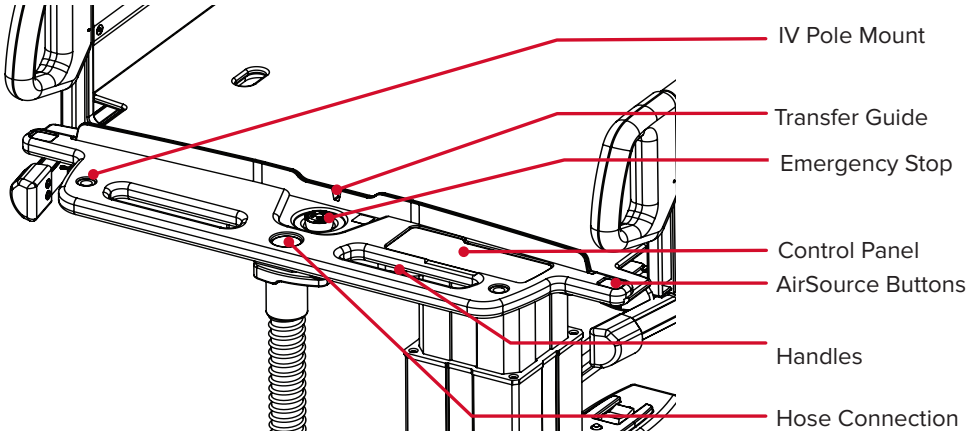


GETTING TO KNOW YOUR AIRDRIVE TROLLEY

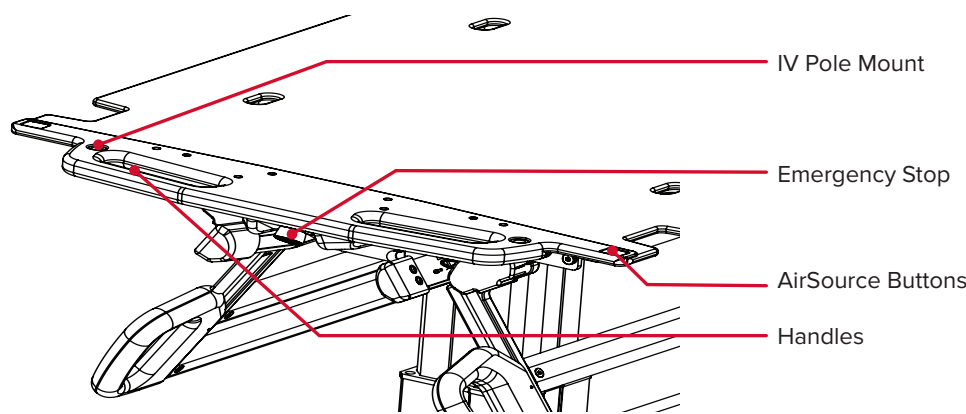
MAIN POWER



CONTROL END

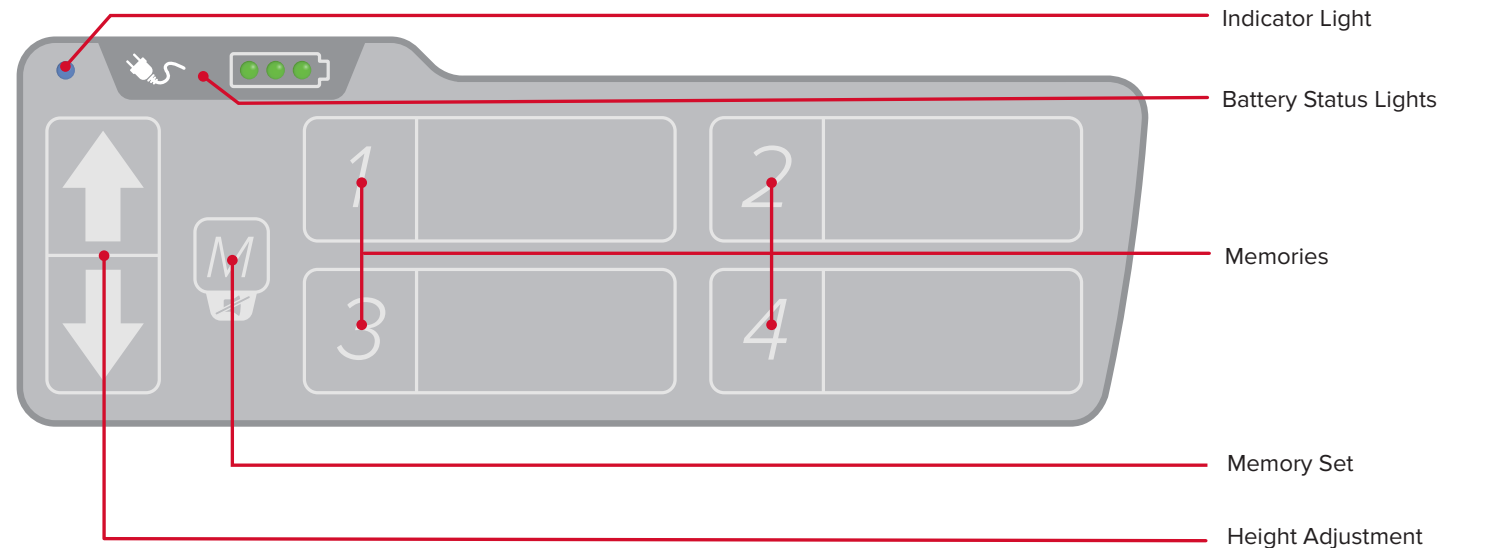


GANTRY END



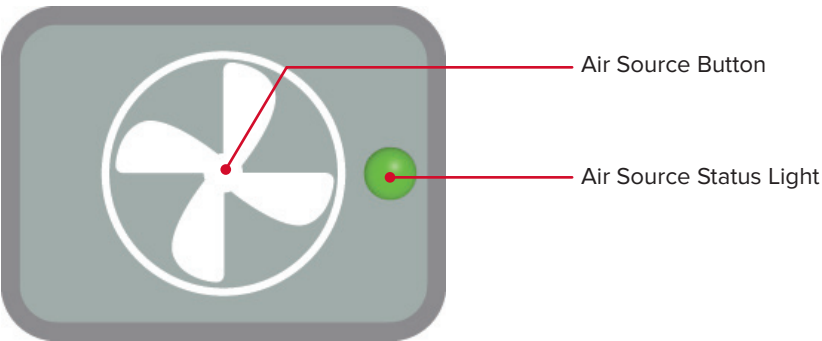
GETTING TO KNOW YOUR AIRDRIVE TROLLEY

CONTROL PANEL



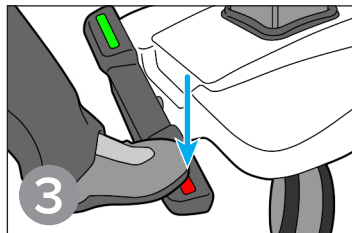
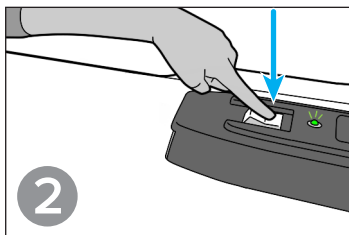
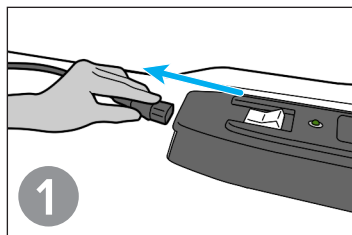
BATTERY STATUS LIGHTS		• Charging (flashing in sequence)		• Partially Charged (1 or 2 green lights illuminated)
		• Fully Charged		• Low Charge • Critically Low (flashing with alarm)
<p>! NOTE ! Press M button to temporarily silence the alarm.</p> <p>! NOTE ! Battery indicators are only active during charging when the trolley's main power is switched on. If the batteries are completely discharged, the battery indicator may display an erroneous charge state during charging until the batteries reach a minimum charge threshold.</p>				
MEMORY SET	The AirDrive Trolley can store up to four height memories. To store a height in memory, use the arrow buttons to reach the desired height, then press and release the M button (D). After the status indicator light begins to flash (A), press and release the desired number memory button (E).			
MEMORIES	Once a memory is set, press and hold the desired preset button until the saved height is reached.			

AIR SOURCE CONTROL FOR PATIENT TRANSFERS

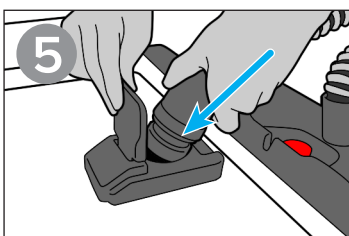
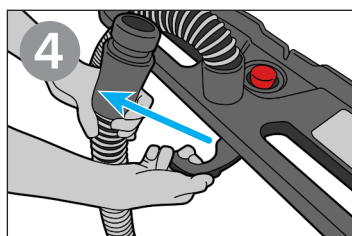
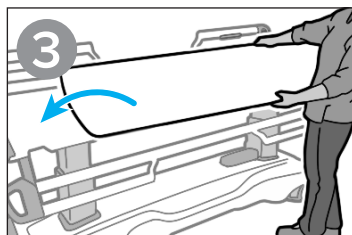
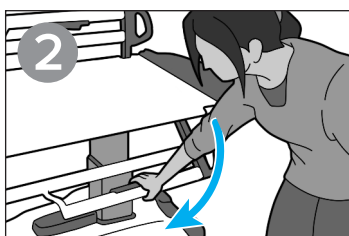
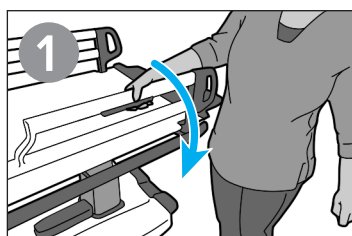


AIR SOURCE BUTTON	Activates and deactivates the airtsource, enabling transfer.	
AIR SOURCE STATUS LIGHT		Not Ready
		Ready
		Active

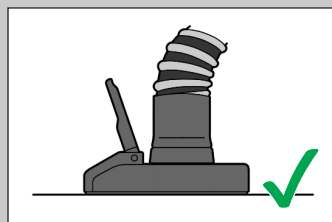
PREPARING THE AIRDRIVE TROLLEY FOR USE



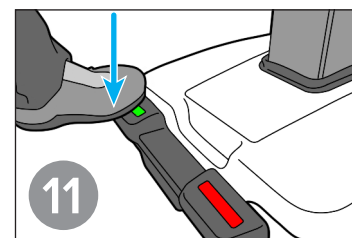
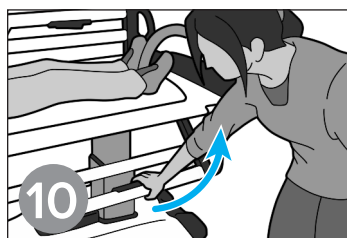
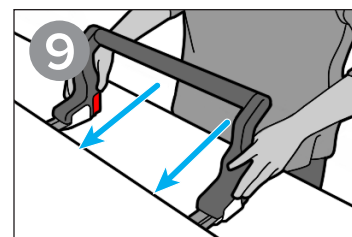
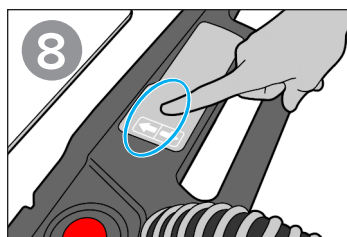
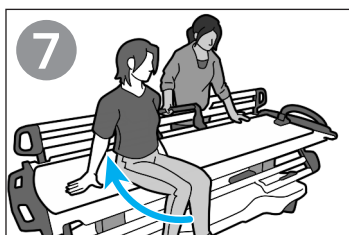
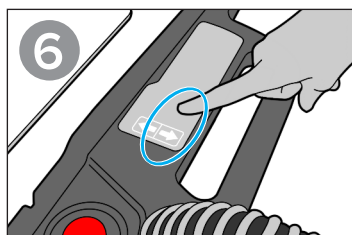
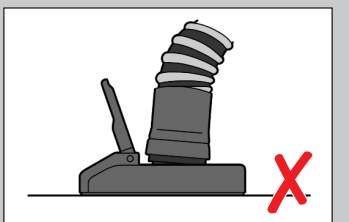
LOADING & POSITIONING THE PATIENT



Properly Engaged

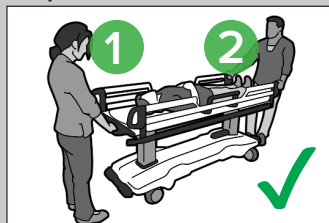


Improperly Engaged

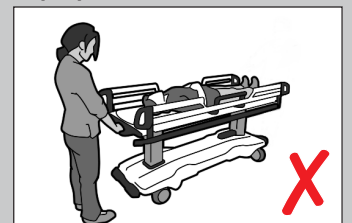


MOVING THE AIRDRIVE TROLLEY

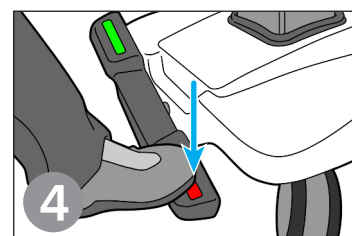
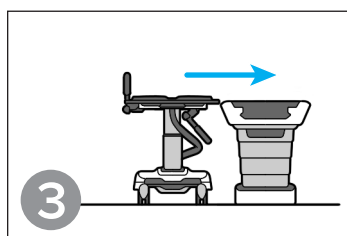
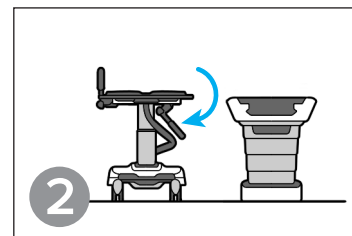
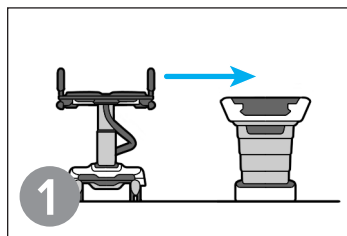
Proper Move



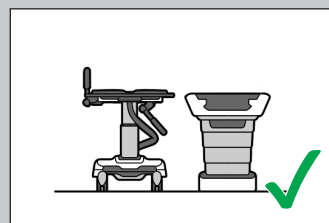
Improper Move



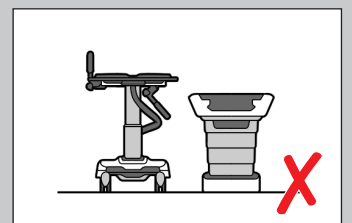
POSITIONING THE AIRDRIVE TROLLEY



Proper Height

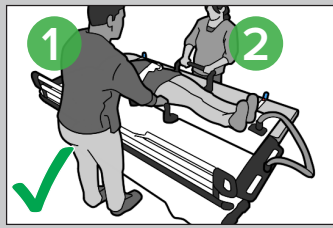


Improper Height

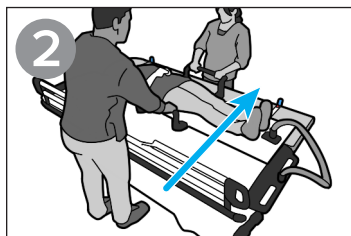
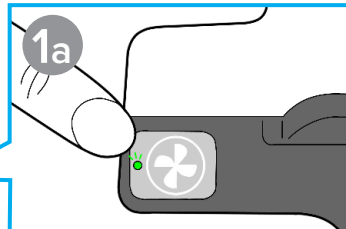
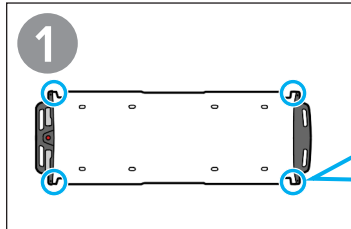
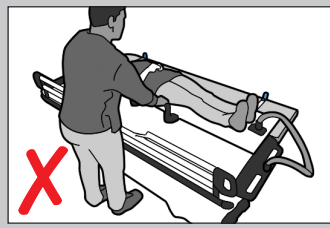


TRANSFERRING FROM THE AIRDRIVE TROLLEY

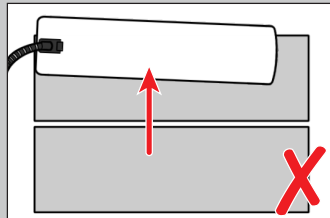
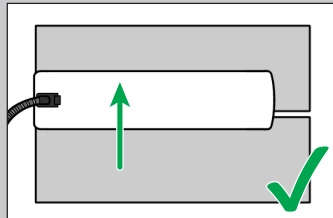
Proper Transfer



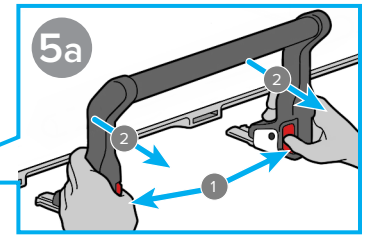
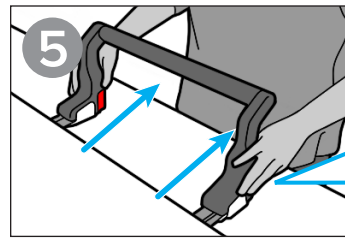
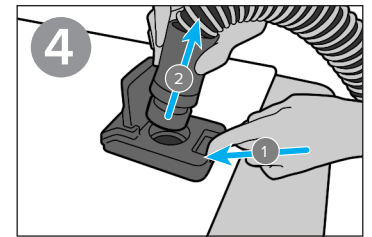
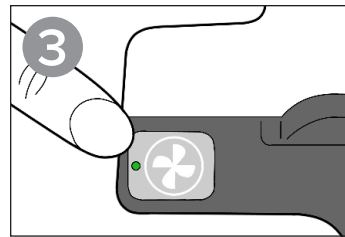
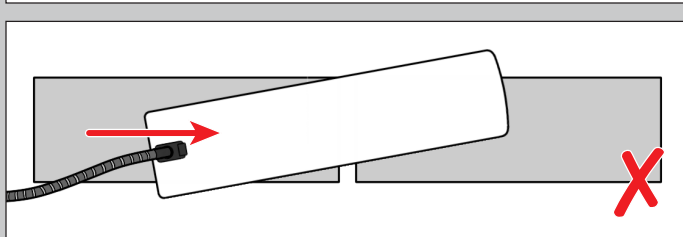
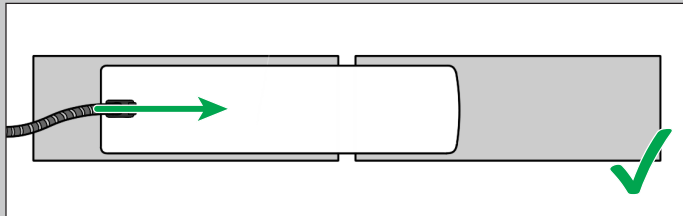
Improper Transfer



Lateral Transfer



Longitudinal Transfer



MAINTENANCE

CLEANING THE SYSTEM

The device can be cleaned with a mild, non-abrasive cleaning or disinfecting solution. To clean, apply solution to clean cloth and wipe the surface. Visually inspect the device, if it is not clean, repeat the previous cleaning steps until visually clean. Use a clean cloth moistened with water to wipe the device to remove any cleaning agent residue. To dry, wipe the device with a clean, dry cloth.

The following cleaning material has been tested and found to be appropriate for cleaning the device:

- Water
- Soap and Water

DISINFECTING THE SYSTEM

To disinfect the device surface, refer to specific instructions from the cleaning agent manufacturer.

- A 10% Clorox® Bleach Solution
- Isopropyl Alcohol

For proper operation of the air bearing, ensure no residue remains after cleaning. Perform final cleaning step with water, if necessary. Wait for air bearing to dry prior to next use.

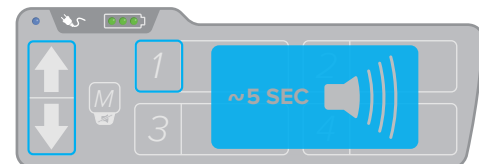
! CAUTION ! Fluids that enter the airdrive Trolley, especially the trolley base or the airshuttle, may cause device malfunction. DO NOT Spray directly onto the Airdrive Trolley or the airshuttle or allow liquids to flow into the trolley base.

! NOTE ! To prolong the life of the batteries and ensure availability of the trolley when needed, it is recommended that the system is charged at the end of every work day.

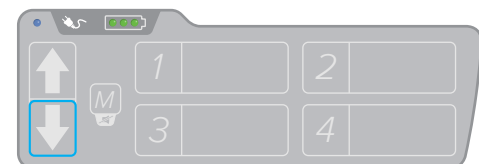
PILLAR CALIBRATION

During normal use, the pillars should remain in alignment. However in extreme circumstances it is possible for the pillars to become misaligned. To calibrate:

1. Press and hold the "Up", "Down", and "1" buttons simultaneously until a beeping sound is heard (~ 5 seconds). AirDrive Trolley is now in pillar calibration mode.



2. Press and hold the "Down" button until the pillars are completely retracted. Now the system is calibrated and ready for normal use.

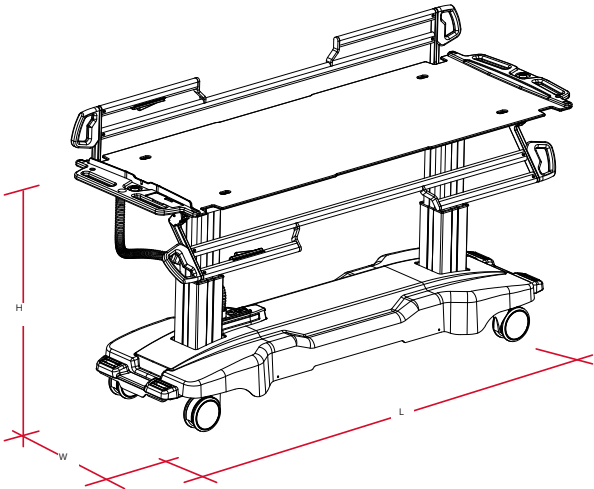


TROUBLESHOOTING

Trolley not turning on	If power light is not on: Plug in the AirDrive Charging Cable to charge the batteries.
	If power light is on: Verify the emergency stops are not activated. Verify the spiral communication cable running from the trolley base to the trolley top is fully connected at the base.
Pillars do not raise and lower evenly	Calibrate the pillars following the instructions under Pillar Calibration in the Maintenance Section.
Air Source Does not Function	Check that the brake is engaged.
Air Bearing Does not inflate	Check that the transfer hose fittings are secure on the transfer hose. The fittings screw tight in the counter-clockwise direction.
	Check the transfer hose connection at the AirShuttle.
	Check the trolley hose connection below the trolley handle at the trolley base.
	Check that the transfer hose is fully engaged at both the AirShuttle Air Inlet.
	Inspect hoses and air bearing for damage.

If the issue cannot be resolved, contact Qfix service representative.

SPECIFICATIONS



DIMENSIONS

- Length (L): 234 cm (92 in)
- Width (W): 80 cm (31.5 in)
- Height (H):
- Maximum: 91 cm (35.8 in)
 - Minimum: 62 cm (24.4 in)
 - Shims can add up to 5 cm (2 in)

DUTY CYCLE

- Pillars: 1 min ON / 9 mins OFF
- Blower: 30 mins ON / 5 mins OFF

POWER REQUIREMENTS

- Input:
- 100–240v AC
- 50/60 Hz

MAX INPUT CURRENT:

- 3 amps

REFERENCES

REF	DEVICE	PRODUCT GUIDE & USER MANUAL
RT-5100	AirDrive Trolley	2005112
RT-5100-S	AirDrive Caddie	2008502
RT-5100-01	Slate AirShuttle	2007235
RT-5100-02	Portrait AirShuttle	2007236
RT-5100-04	BoS AirShuttle	2007614
RT-5100-07	Alta AirShuttle	2008315

AirDrive, AirDrive Trolley, AirShuttle, and Slate AirShuttle are trademarks of Qfix.
 Clorox is a registered trademark of The Clorox Company.

ETL CLASSIFIED



Intertek
 5018847

Conforms To
 AAMI STD ES60601-1
 IEC STD 60601-1-6
 Certified To CSA STD
 C22.2 # 60601-1