



positioning
patients for life.®

INSTRUCTIONAL GUIDE

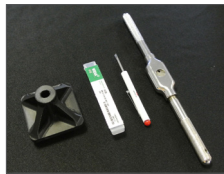
Access™ Supine Tapping

GOAL

The video demonstrated use of the supplied kit for tapping two holes on the Access™ Supine.

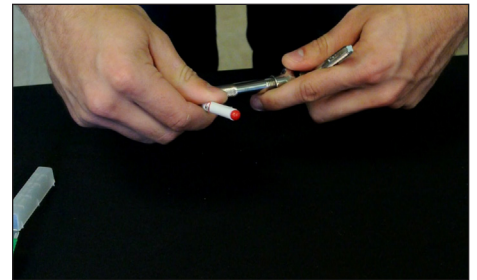
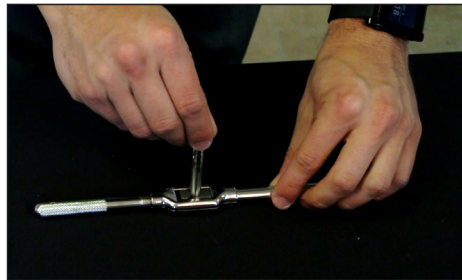
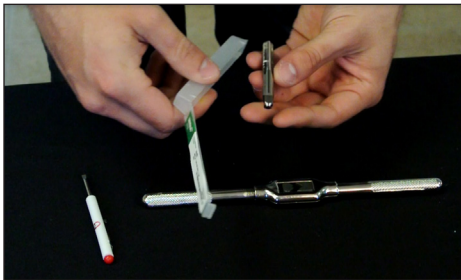
INCLUDED MATERIALS

- Tapping guide
- Tap
- Screwdriver
- Tap Handle



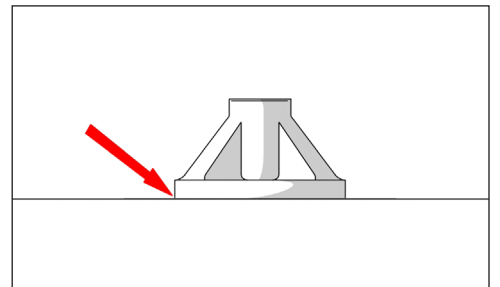
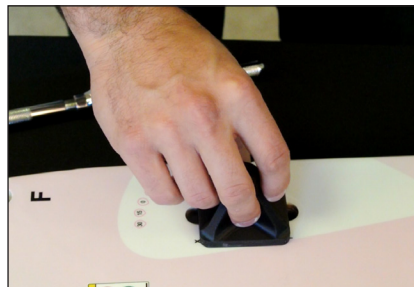
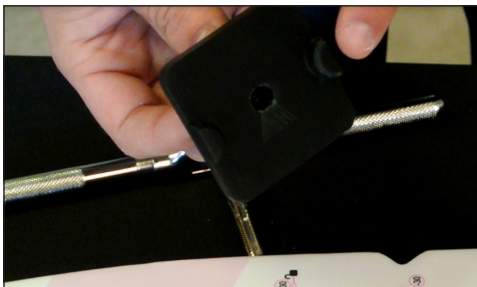
ASSEMBLING THE TAP HANDLE

To assemble the tap handle, loosen the collar of the tap handle and insert the base end of the tap into the handle collar and tighten the handle.



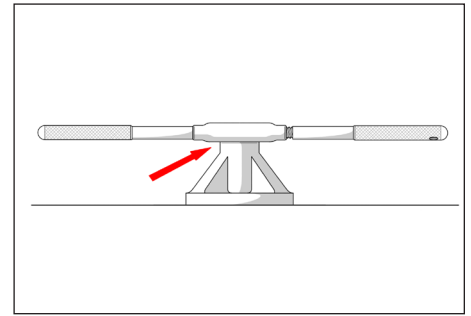
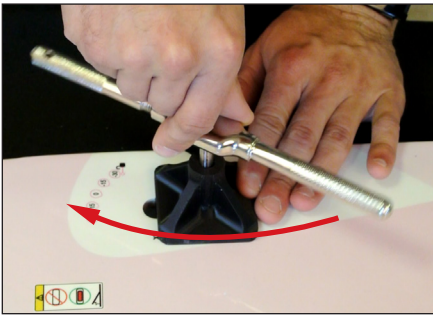
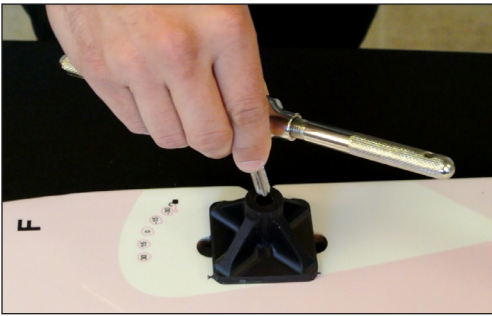
INSTALLING THE TAPPING GUIDE

Install the tapping guide by inserting the two base pegs into the two arm support holes above and below the hole to be tapped. Make sure that the tapping guide is flat to the device.



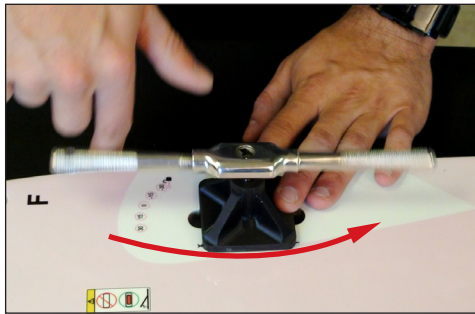
TAPPING THE DEVICE

To start the tap, insert the M8 x 1.25 tap into the guide, then slowly begin to turn it counter clockwise to find the threads. Once engaged turn the tap clockwise two full turns then back one half turn. Repeat this process until the tap is stopped by the tapping guide. It is important to stop turning the tap once it reaches the guide, continuing to turn the handle will damage the threads.



BACKING OUT THE TAP

After finishing tapping the part, back the tap out of the part and remove the tapping guide. Once hole is tapped make sure to clean any remaining chips out of the hole.



REPEAT

After tapping the one side of the device repeat the process for the other side of the Access™ Supine Breast Device.

TEST FIT

Using the provided thumbscrews, test the newly tapped hole. If the screw is difficult to turn, repeat the process to re-tap the hole.

