

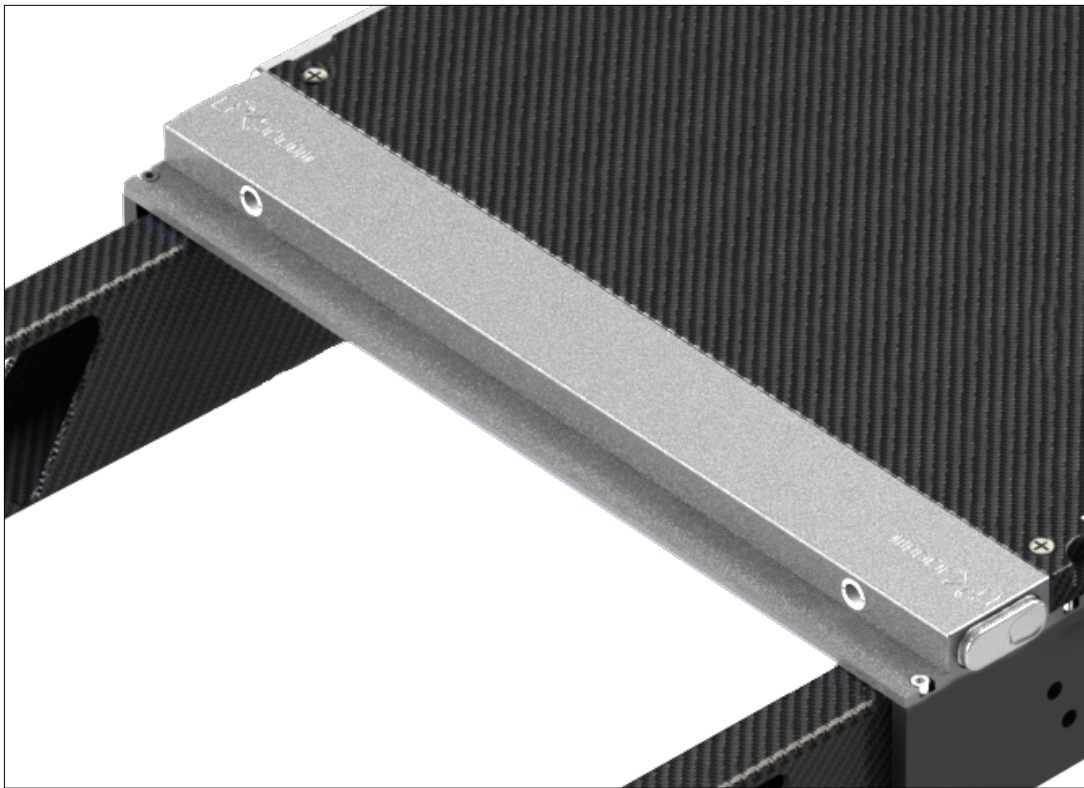


positioning  
patients for life.®

# PRODUCT GUIDE & USER MANUAL

RT-4551KVOTM

kVue™ OneTouch™ Latch





Made in the USA by

Qfix

440 Church Rd, Avondale, Pennsylvania, USA

+1 610-268-0585 [www.Qfix.com](http://www.Qfix.com)

kVue and OneTouch are trademarks of Qfix.

# TABLE OF CONTENTS

GENERAL PRECAUTIONS..... 4

    WARNING STATEMENTS ..... 4

    ENVIRONMENTAL CONDITIONS ..... 4

    WARNING LABELS AND DESCRIPTIONS..... 5

OPERATING INSTRUCTIONS..... 6

    INSTALLATION & REMOVAL ..... 6

MAINTENANCE.....7

    CLEANING AND LUBRICATING PROCEDURE FOR ONETOUCH LATCH.....7

# GENERAL PRECAUTIONS

## WARNING STATEMENTS

**! WARNING ! NO MODIFICATION OF THIS EQUIPMENT IS ALLOWED. IF ANY PART OF THIS DEVICE EXPERIENCES A CATASTROPHIC LOAD, APPEARS DAMAGED OR FUNCTIONS IMPROPERLY, DISCONTINUE USE IMMEDIATELY AND CONTACT QFIX AT +1 484-720-6054 OR TECHSUPPORT@QFIX.COM.**

**! WARNING ! THE ONETOUCH IS A PRECISION MECHANISM AND IS ONLY FOR USE WITH APPROVED QFIX KVUE DEVICES. UNAPPROVED NON-QFIX DEVICES THAT HAVE NOT BEEN VALIDATED BY QFIX MAY NOT BE SAFE FOR USE AND WILL VOID WARRANTY IF USED.**

**! WARNING ! ONETOUCH LATCH MIGHT NOT FUNCTION PROPERLY, IF NOT CLEANED AND LUBRICATED REGULARLY.**

## ENVIRONMENTAL CONDITIONS

### Operating

- Temperature: 10°C to 40°C (50°F to 104°F)
- Humidity: 10% to 90% non-condensing

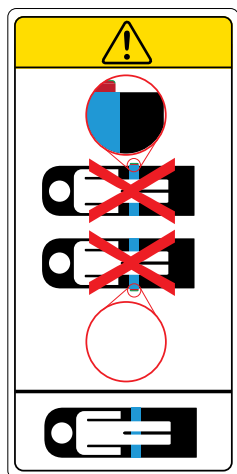
### Storage

- Temperature: 0°C to 50°C (32°F to 122°F)
- Humidity: 0% to 95%

# GENERAL PRECAUTIONS

## WARNING LABELS & DESCRIPTIONS

Refer to [Qfix.com](http://Qfix.com) for a listing of symbols and their definitions.



### ONETOUCH™ LATCH

Place a patient on the kVue Couch Top ONLY when the red collar of the latch button is not visible. The OneTouch Latch has a built-in indicator to verify proper engagement. If the red collar of the latch button is visible, the locking mechanism is not engaged.

# OPERATING INSTRUCTIONS

## INSTALLATION AND REMOVAL

### OneTouch™ REPLACEMENT

1. Remove any devices from the Couch Top.
2. Remove the kVue Couch Top Insert (refer to specific kVue Couch Top Insert Product Guide and User Manual).
3. Remove all screws from the Back Panel.
4. Remove the Back Panel by pulling directly upwards.

**! NOTE !** The superior end of the Back Panel is located to the OneTouch Latch using two locating pins, which may create a tight fit. It is important to remove the Back Panel by pulling directly upwards, as to not damage the Back Panel or the OneTouch.

5. Remove the four (4), M5 screws from the current OneTouch from the Base Frame using a hex key. (Fig. 1)
6. Replace the current OneTouch Latch with the new OneTouch Latch.
7. Reinstall the four (4), M5 screws to attach the OneTouch to the Base Frame.
8. Reinstall the Back Panel.
9. Reinstall the kVue Couch Top Insert and any devices back onto the kVue Couch Top.

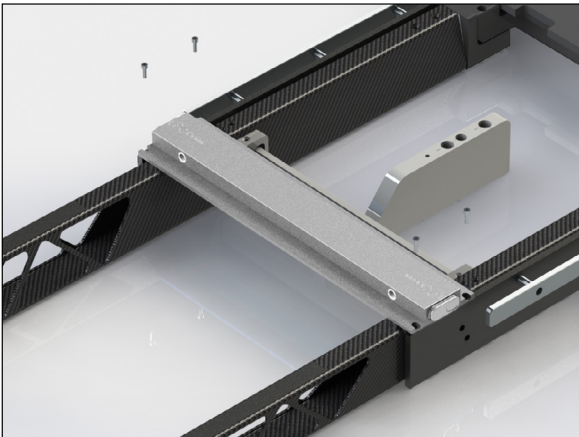


Fig. 1

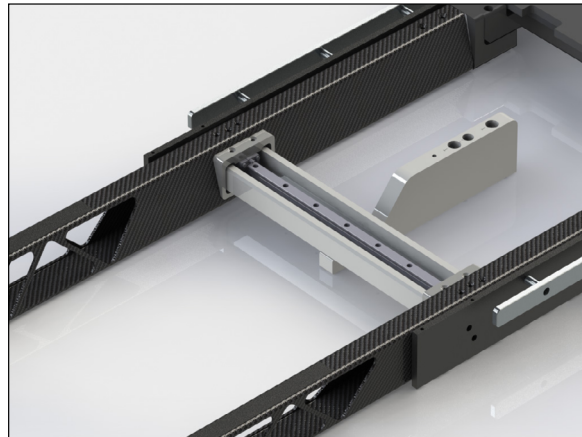


Fig. 2

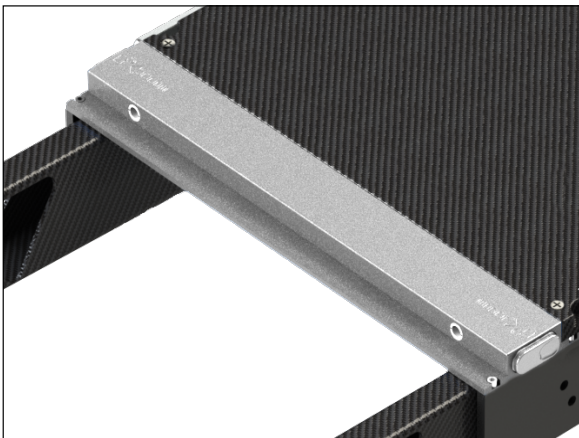


Fig. 3

# MAINTENANCE

## CLEANING AND LUBRICATING PROCEDURE FOR ONETOUCH LATCH

We recommend performing this procedure monthly.

Materials List: fluoropolymer (PTFE) dry film lubricant, cotton swabs, and dry wipes or paper towels

**! NOTE !** The images shown below are of a standard kVue Couch Top. Maintenance is the same for every kVue Couch Top.

1. Remove kVue Insert. (Fig. 4)
2. Wipe any lint or debris from the outside of latch. (Fig. 5)
3. Use dry cotton swab to clean out the inside of the receiving holes. (Fig. 6)
4. Spray lubricant into the receiving holes. (Fig. 7)
5. Use dry cotton swab to wipe out loose lint and debris. (Fig. 6)
6. Spray lubricant into the receiving holes again. (Fig. 7)
7. Spray lubricant into the gap between the top of the button and the latch housing to lubricate interior components. (Fig. 8)
8. Reinsert the kVue Insert and eject by pulling latch from opposite side. Repeat lubrication step 7.
9. Cycle kVue Insert installation and removal 3 to 4 times and repeat lubrication process if Insert does not eject freely.
10. Wipe off any excess lubricant from the exterior of the OneTouch Latch.

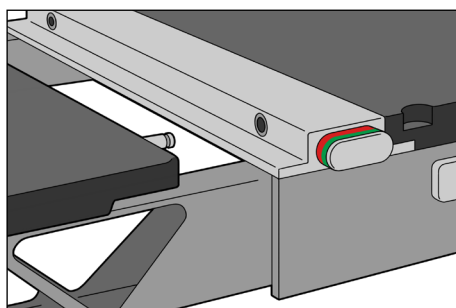


Fig. 4

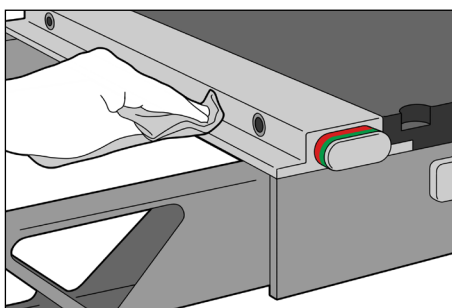


Fig. 5

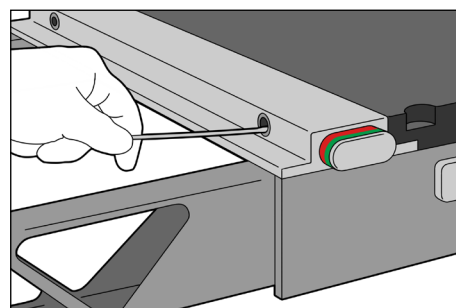


Fig. 6

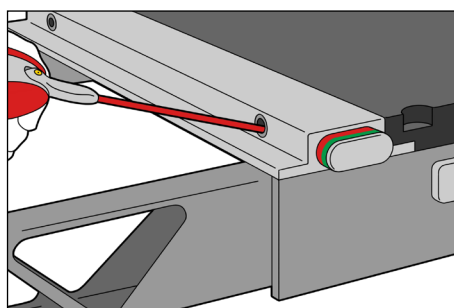


Fig. 7

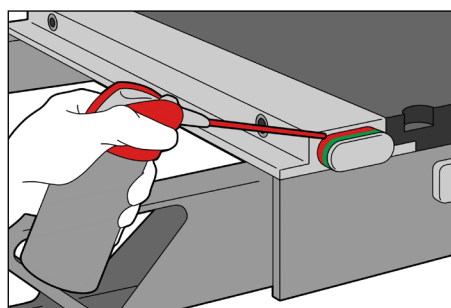


Fig. 8



440 Church Road  
Avondale, PA 19311 USA  
[www.Qfix.com](http://www.Qfix.com)

+1 610.268.0585 / 800.526.5247

+1 610.268.0588 / 800.831.8174

[sales@Qfix.com](mailto:sales@Qfix.com)

2004917\_EN\_1  
2024-08