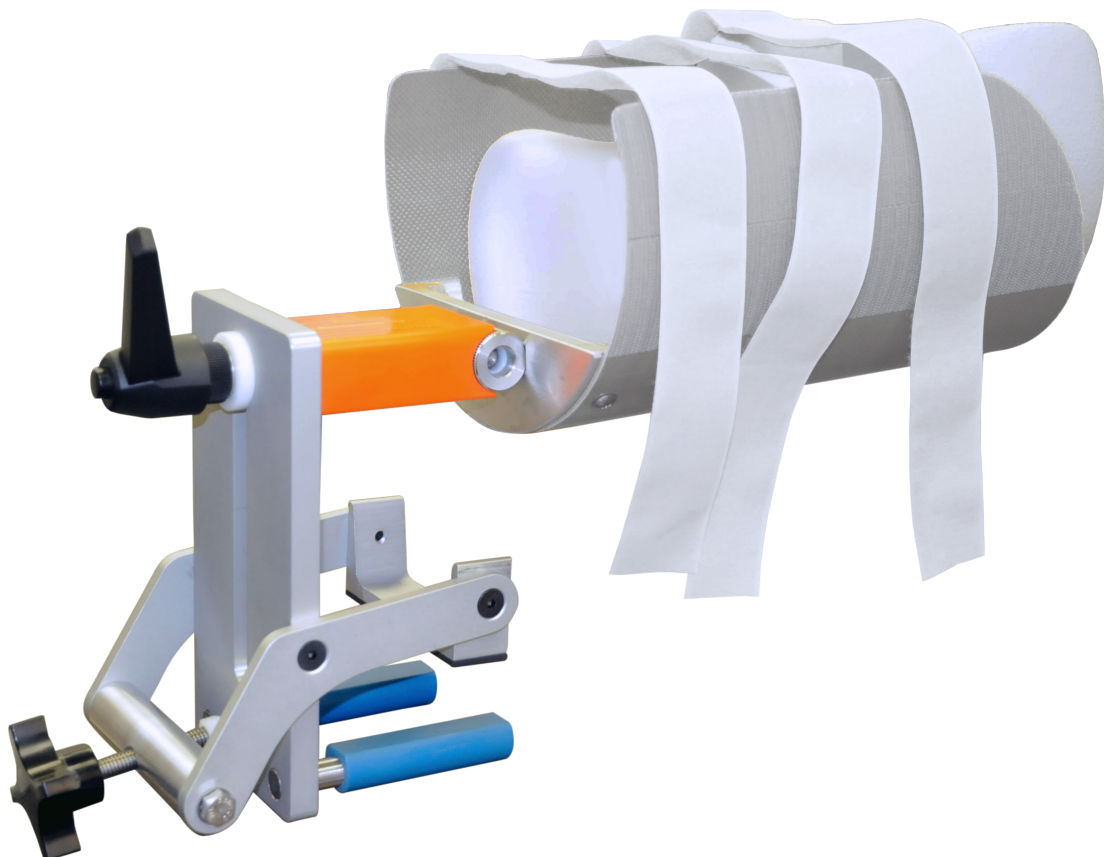





PRODUCT GUIDE & USER MANUAL

8002048 & 8002049

DSA-2Q & DSA-2T Head Holder





EC	REP	Advena Limited Tower Business Centre, 2nd Flr Tower Street, Swatar, BKR 4013 Malta	 Made in the USA Qfix 440 Church Rd, Avondale, Pennsylvania, USA +1 712-737-8668 www.CQmedical.com
----	-----	---	---

Cidex® is a registered trademark of Johnson & Johnson
Clorox® is a registered trademark of The Clorox Company.

TABLE OF CONTENTS

GENERAL PRECAUTIONS.....	4
WARNING STATEMENTS	4
SERIOUS INCIDENTS.....	4
LOAD RATING	4
WARNING LABELS & DESCRIPTIONS	4
INTENDED USE.....	5
FEATURES.....	6
DESCRIPTION	6
MAINTENANCE.....	7
CLEANING THE SYSTEM.....	7
DISINFECTING THE SYSTEM.....	7
OPERATING INSTRUCTIONS.....	8
INSTALLATION.....	8
SET UP	9
REMOVAL.....	10

GENERAL PRECAUTIONS

WARNING STATEMENTS

! WARNING ! NO MODIFICATION OF THIS EQUIPMENT IS ALLOWED. IF ANY PART OF THIS DEVICE EXPERIENCES A CATASTROPHIC LOAD, APPEARS DAMAGED OR FUNCTIONS IMPROPERLY, DISCONTINUE USE IMMEDIATELY AND CONTACT CQ MEDICAL AT +1 712-737-8668 OR INFO@CQMEDICAL.COM.

SERIOUS INCIDENTS

Please report any serious incidents (e.g. incidents which result in or have the potential to result in death or serious injury) to both CQ Medical and your country's Competent Authority.

LOAD RATING

DO NOT exceed 10 kg (22 lb) uniformly distributed load.

! NOTE ! More finite adjustments might have to be made once the patient is in place.

! NOTE ! When positioning the patient, pay attention not to put the patient too high in the Head Holder. This will be uncomfortable and may cause artifacts.

WARNING LABELS & DESCRIPTIONS

Refer to www.CQmedical.com for a listing of symbols and their definitions.

INTENDED USE

The Head Holder is designed to position and immobilize the head. This device is primarily intended for the interventional neuroradiology procedures. This is also applicable to any interventional procedure in order to minimize patient's head motion.

The Head Holder is intended to be used in a clinical environment by trained technicians and clinicians.

! NOTE ! United States Federal law restricts this device to sale by or on the order of a physician.

PATIENT TARGET GROUPS

Patients undergoing general medical or surgical procedures involving diagnostic imaging.

INTENDED USERS

The intended user for the products is a person qualified in accordance with the requirements of the regulatory region.

FEATURES

DESCRIPTION

The product is designed to complement and enhance the image quality of cardiovascular x-ray equipment and to enhance the performance, productivity and image quality of cardiovascular x-ray equipment. The product supports the patient's head reducing the misalignment with the subtracted image and enhancing 3-D images. The product's simple design makes for easy installation, adjustment and removal and allows the user to focus on the needs of the patient.

MAINTENANCE

CLEANING THE SYSTEM

The device can be cleaned with a mild, non-abrasive cleaning or disinfecting solution. To clean, apply solution to clean cloth and wipe the surface.

DISINFECTING THE SYSTEM

The following cleaning materials have been tested and found to be appropriate for cleaning the device surface. To disinfect the device surface, refer to specific instructions from the cleaning agent manufacturer.

- Water
- A 10% Clorox® Bleach Solution
- Isopropyl Alcohol
- Cidex® 2.4% Activated Dialdehyde Solution
- Soap and Water

DO NOT spray directly onto the Head Holder.

DO NOT leave the Head Holder in water overnight.

DO NOT use chlorine to clean the Head Holder.

Periodically check all fasteners for tightness.

OPERATING INSTRUCTIONS

INSTALLATION



1



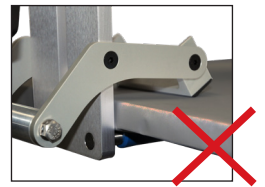
2



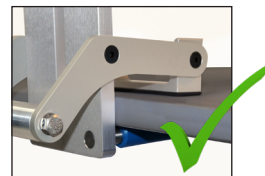
3



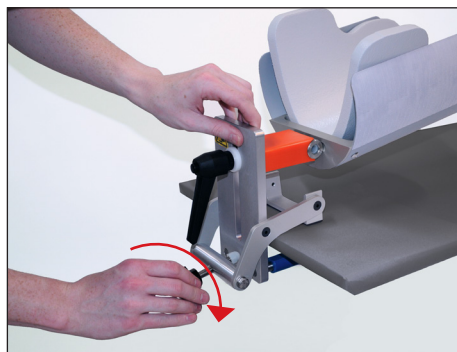
4



5



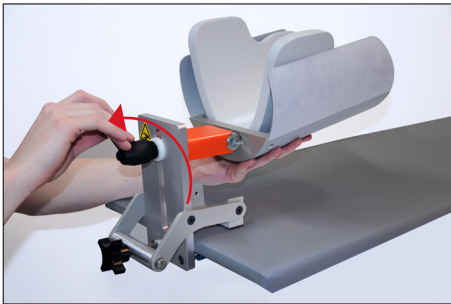
6



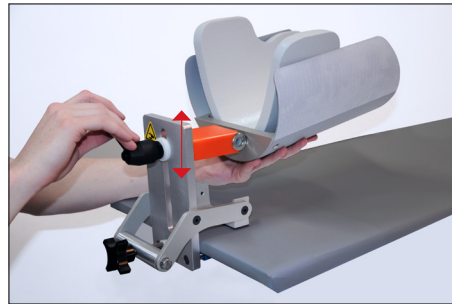
7

OPERATING INSTRUCTIONS

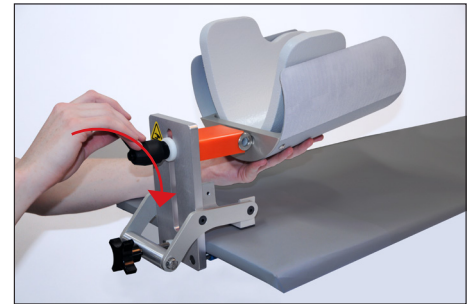
SET UP



8



9



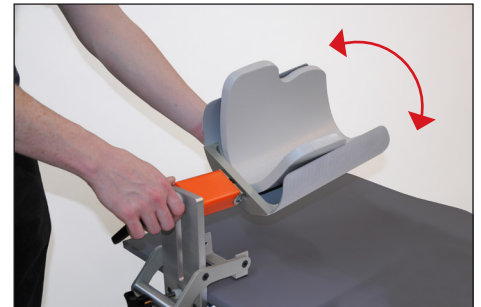
10



11



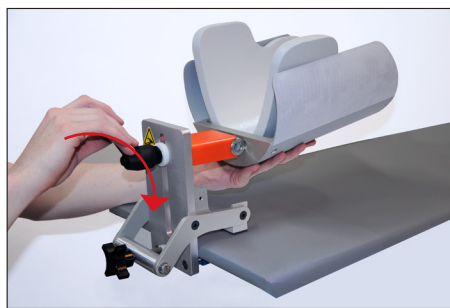
12



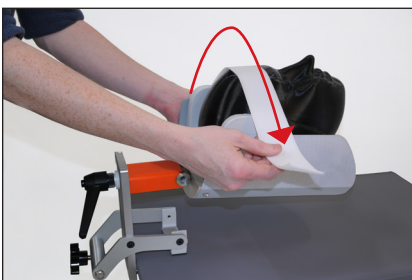
13



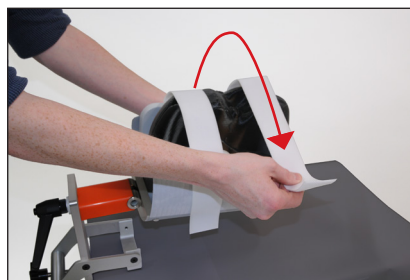
14



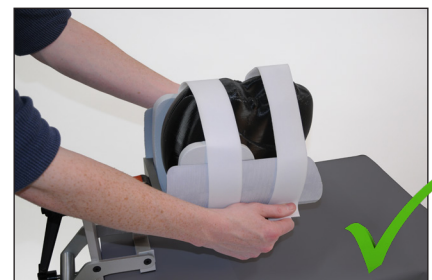
15



16



17



18



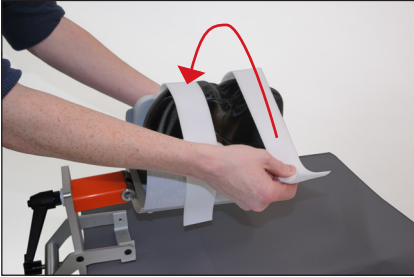
19



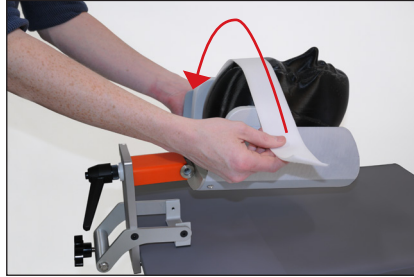
20

OPERATING INSTRUCTIONS

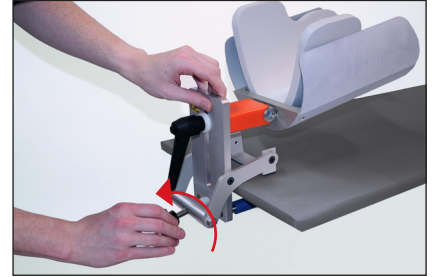
REMOVAL



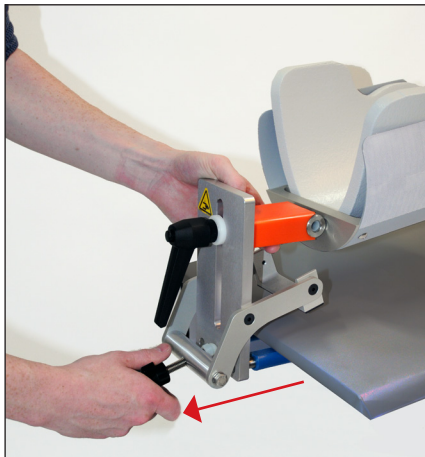
21



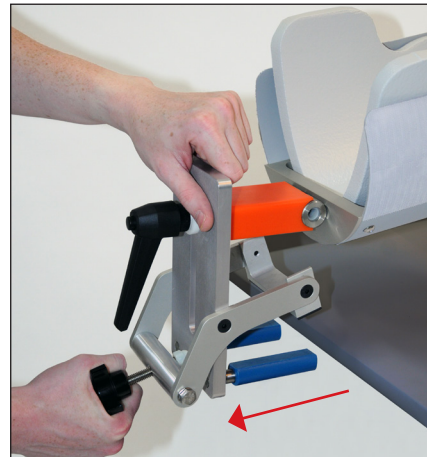
22



23



24



25



440 Church Road
Avondale, PA 19311 USA
www.CQmedical.com

☎ +1 712.737.8668 / 800.842.8688
✉ info@CQmedical.com

2004685_EN_1
2024-12