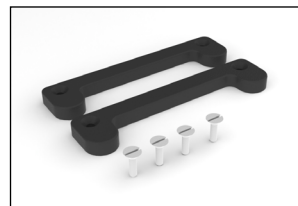
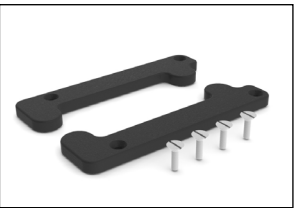
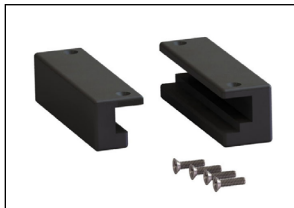
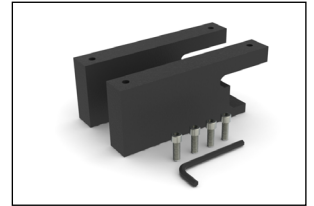
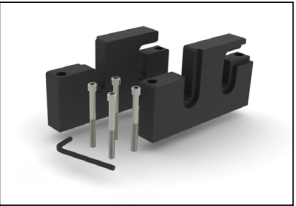
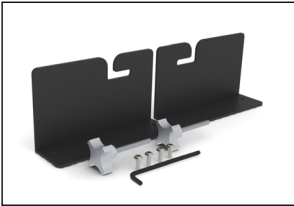
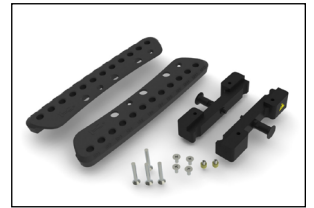
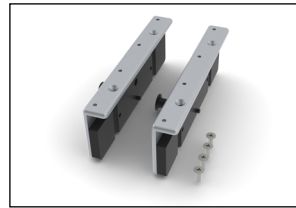
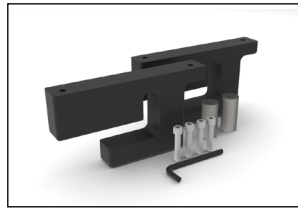
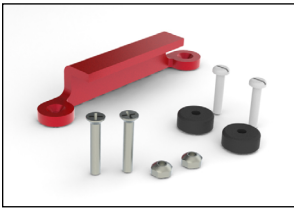



INSTALLATION GUIDE & USER MANUAL

Indexing Adapters





EC	REP	Advena Limited Tower Business Centre, 2nd Flr Tower Street, Swatar, BKR 4013 Malta	 Made in the USA by Qfix 440 Church Rd, Avondale, Pennsylvania, USA +1 610-268-0585 www.Qfix.com
----	-----	---	--

Quantum, AccuFix, Cantilever Board, CURVE, BoS, Encompass and Hand Grip Array are trademarks of Qfix.

Exact® and ETR® are registered trademarks of Varian Medical Systems.

Medical Intelligence I-Beam, is a trademark and Precise® is a registered trademark of Elekta AB.

ZXT and TXT are trademarks of Siemens AG.

Med-Tec Prodigy, and IPPS are trademarks of Civco Medical Solutions.

Gemini is a trademark of Philips Medical Systems.

Discovery is a trademark of GE Medical.

TABLE OF CONTENTS

GENERAL PRECAUTIONS	4
RT-4527LMI3 INSTALLATION	5
RT-4527LTOMO INSTALLATION	7
RT-4527MI INSTALLATION	9
RT-4527EXAG INSTALLATION.....	11
RT-4527QFIX INSTALLATION	13
RT-4527ELK INSTALLATION	15
RT-4529M INSTALLATION.....	17
RT-4527MTPCT INSTALLATION.....	19
RT-4527MTP INSTALLATION	21
RT-4527IPS INSTALLATION	23
RT-4527ZXT INSTALLATION.....	25
RT-4527SKD INSTALLATION	27
RT-4527ETRJ INSTALLATION.....	29
RT-4527EXA475 INSTALLATION	31
RT-4527PETCT INSTALLATION.....	33
SHIM INSTALLATION	35

GENERAL PRECAUTIONS

WARNING STATEMENTS

Refer to Qfix.com for a listing of symbols and their definitions.

! WARNING ! NO MODIFICATION OF THIS EQUIPMENT IS ALLOWED. IF ANY PART OF THIS DEVICE EXPERIENCES A CATASTROPHIC LOAD, APPEARS DAMAGED OR FUNCTIONS IMPROPERLY, DISCONTINUE USE IMMEDIATELY AND CONTACT QFIX AT +1 484-720-6054 OR TECHSUPPORT@QFIX.COM.

Adapters are designed to work with the AccuFix™ Cantilever Board™, CURVE™ Board, and BoS™ Headframe.

GENERAL USE WARNING

Device should NOT be cantilevered over the end of the couch top when using the following CT adapters:

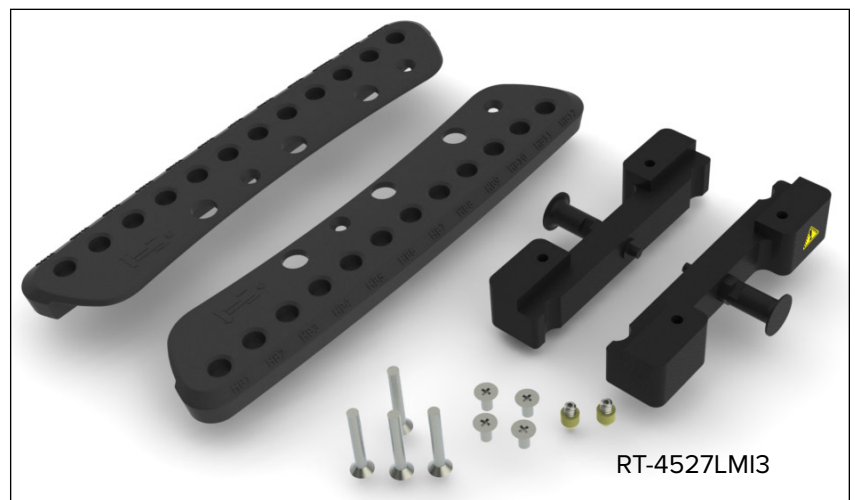
- RT-4527LTOMO (pg. 7)
- RT-4529M (pg. 20)
- RT-4527MTPCT (pg. 22)
- RT-4527EXA475 (pg. 34)
- RT-4527PETCT (pg. 36)

Cantilevering over the end of the couch top may cause the device to fall off of the couch top, injuring the patient.

ADAPTER SETUP

RT-4527LMI3

ELEKTA / MEDICAL INTELLIGENCE I-BEAM™ AND TOMOTHERAPY
ADAPTER



Tools Needed: Phillips Head Screwdriver



! WARNING ! USE CAUTION AS A PINCH POINT MAY OCCUR BETWEEN THE DEVICE ADAPTER AND THE COUCH TOP WHEN PRESSURE IS APPLIED SUPERIOR TO THE WARNING LINE.

ADAPTER SETUP

RT-4527LMI3

! NOTE ! If installing onto a 28 mm thick device, such as the Encompass™, refer to page 38 for shim installation before continuing with setup.

1. Install adapters to each Hand Grip Array using 2 (each), ¼-20 x 1 ½" screws (Fig. 1).
2. Install yellow cone locating adapter directly onto the bottom of the device (Install one on each side). (Fig. 2 and 2a)
3. Install the Hand Grip Arrays onto the device, in two of the holes spaced 140 mm (5.5") apart, using 2 (each), ¼-20 x ½" screws. (Fig. 3)

! NOTE ! Pinch Point may occur between the device adapter and the couch top when pressure is applied superior to the warning line.

! NOTE ! For more information on installing Hand Grip Arrays, refer to the Hand Grip Array Product Guide and User Manual.

4. Locate the device onto the couch top by aligning the yellow cone with the indexing holes on the top surface of the couch top. Twist and pull the plunger to attach/release the device onto the couch top.

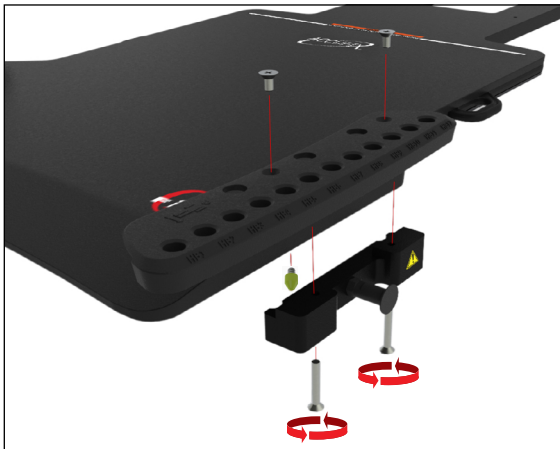


Fig. 1

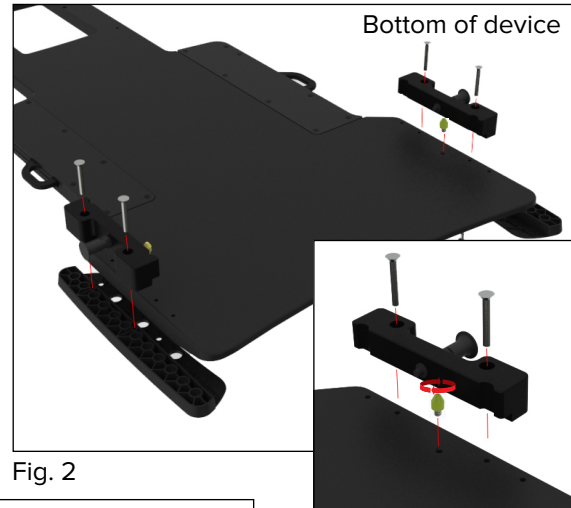


Fig. 2

Fig. 2a

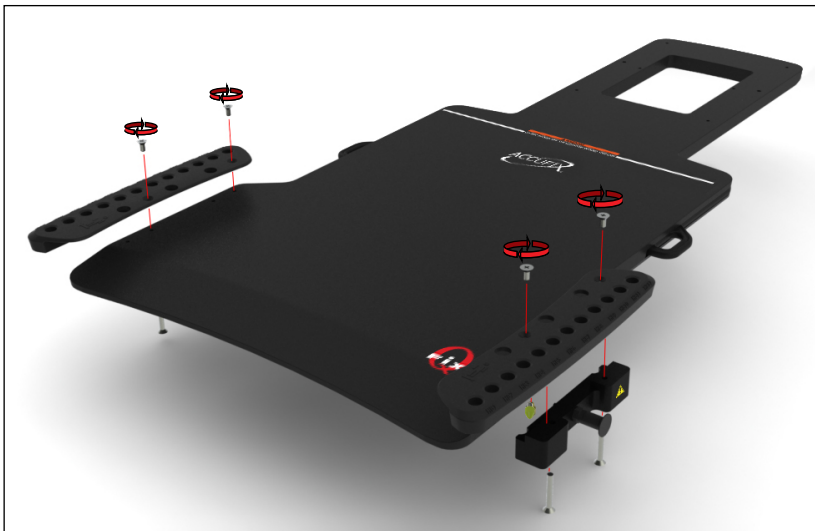


Fig. 3

ADAPTER SETUP

RT-4527LTOMO



! WARNING ! DEVICE SHOULD NOT BE CANTILEVERED OVER THE END OF THE COUCH TOP WHEN USING THIS ADAPTER; DOING SO MAY CAUSE THE DEVICE TO FALL OFF THE COUCH TOP, INJURING THE PATIENT.

ADAPTER SETUP

RT-4527LTOMO

1. Install yellow cone locating adapter directly onto the bottom of the device (Install one on each side) (Fig. 4 and 5).
2. Locate the device onto the couch top by aligning the yellow cone with the indexing holes on the top surface of the couch top.



Fig. 4

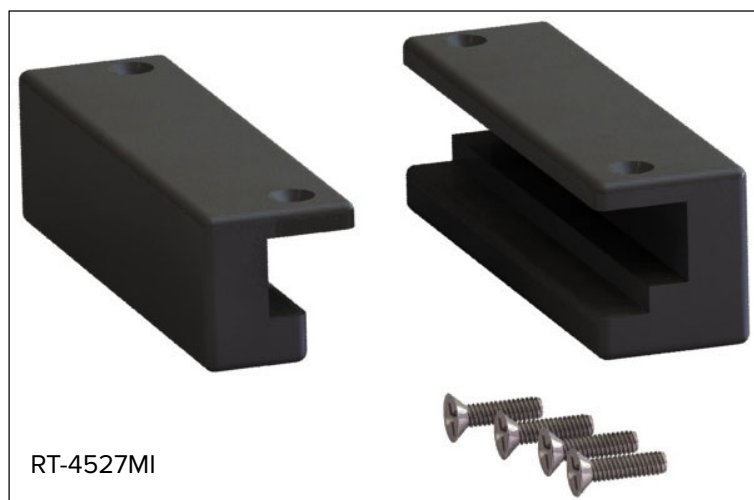


Fig. 5

ADAPTER SETUP

RT-4527MI

ELEKTA / MEDICAL INTELLIGENCE I-BEAM™ AND TOMOTHERAPY
ADAPTER



Tools Needed: Phillips Head Screwdriver

ADAPTER SETUP

RT-4527MI

1. Install either adapter to one side of the device in the position shown below, using 2 (each), 1/4-20 x 1/2" screws. (Fig. 6)

! NOTE ! It does not matter which set of holes are used, however if there is a Hand Grip Array installed, then use the available set of holes for adapter.

2. Repeat installation for the opposite adapter (Fig 7).
3. Place 2-pin locating bar in the desired position (once attached the locating bar pins will line up with the holes at the bottom of the device) (Fig 6, 7 and 8).
4. Install device onto couch top by hooking the larger of the two adapters onto the couch top first, then the smaller adapter, and locate the device using the 2-pin locating bar.

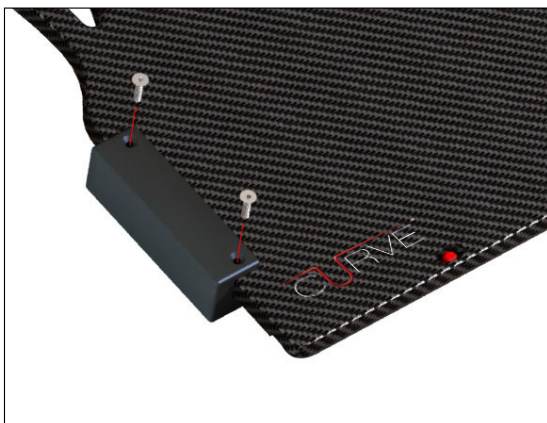


Fig. 6

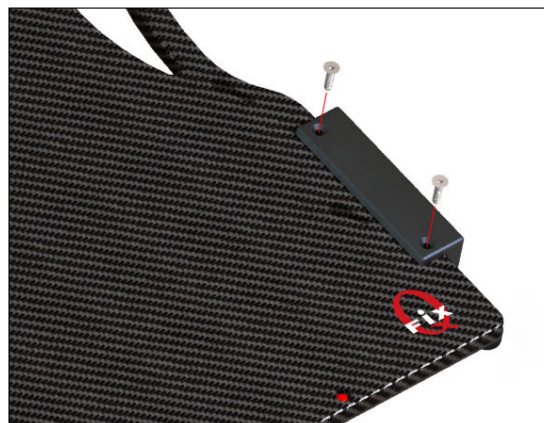


Fig. 7

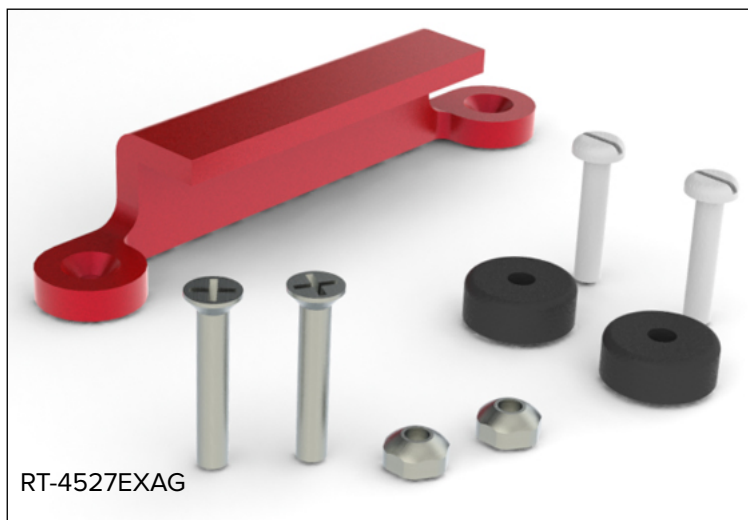


Fig. 8

ADAPTER SETUP

RT-4527EXAG

VARIAN EXACT® ADAPTER



Tools Needed: Philips and Flat Head Screwdriver

ADAPTER SETUP

RT-4527EXAG

1. Install red adapter to device, in two of the holes spaced 140 mm (5.5") apart, using 2, 1/4-20 x 1 3/8" screws. Then attach the 2, 1/4-20 safety nuts onto the screws from the top side of the device (Fig. 9).

! NOTE ! The adapter can be installed on either the right or left side of device. It does not matter which set of holes are used, however if there is a Hand Grip Array installed, then use the available set of holes for adapter.

2. Install 2 Locating Discs on the opposite side of the locating adapter, in the corresponding holes, using 1/4-20 x 1 1/4" screws (1 for each) (Fig. 10).
3. Install device onto couch top by hooking the red adapter onto one side, then push the side with the locating discs down into the indexing notches until it is secure.



Fig. 9

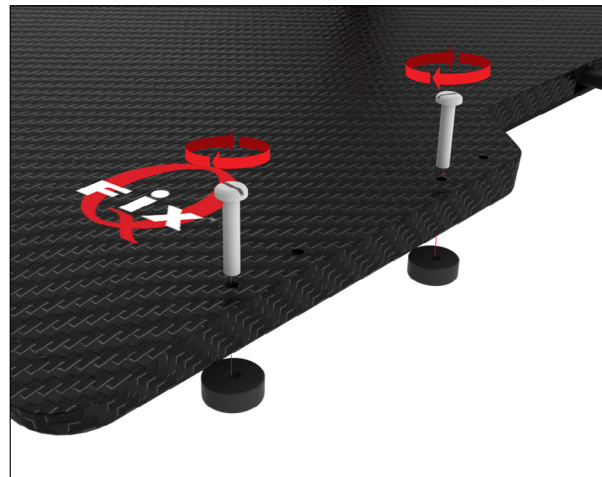


Fig. 10



Fig. 11

ADAPTER SETUP

RT-4527QFIX

QFIX™ KVUE™ AND QUANTUM™ ADAPTER



Tools Needed: Philips and Flat Head Screwdriver

ADAPTER SETUP

RT-4527QFIX

1. Install adapter to device, in two of the holes spaced 140 mm (5.5") apart, using 2, ¼-20 x ¾" screws. Be sure the part of the adapter with the overhang is facing inward, so it can lock onto the lip of the Qfix device (Fig. 12).

! NOTE ! The adapter can be installed on either the right or left side of device. It does not matter which set of holes are used, however if there is a Hand Grip Array installed, then use the available set of holes for adapter.

2. Install 2 locating discs on the opposite side of the locating adapter, in the corresponding holes, using ¼-20 x 1 ¼" screws (1 for each) (Fig. 13).

3. Install the device onto the couch top by hooking the adapter onto one side of the couch top, then push the side with the locating discs down into the indexing notches until it is secure.



Fig. 12

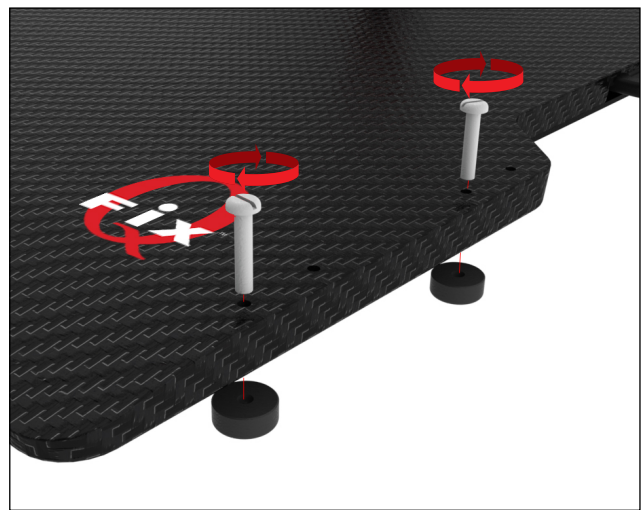


Fig. 13

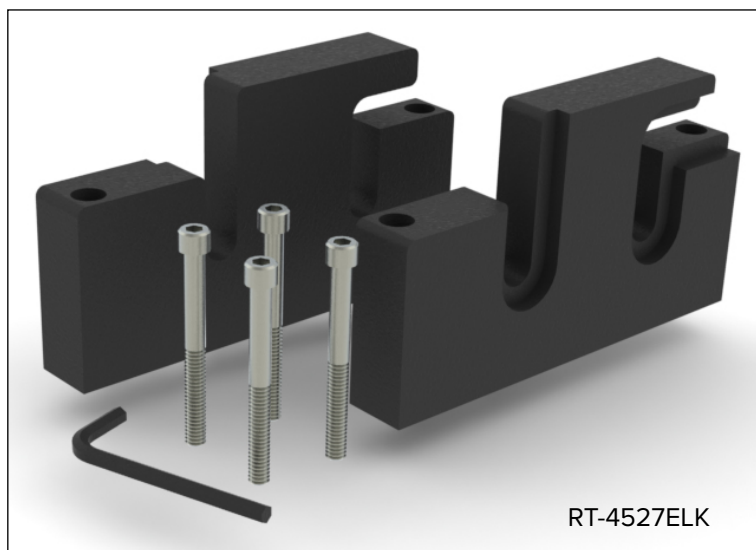


Fig. 14

ADAPTER SETUP

RT-4527ELK

ELEKTA PRECISE®



ADAPTER SETUP

RT-4527ELK

1. Install adapter so that the smooth surface is on the outside of the device and the adapter is in the position shown below, in two of the holes spaced 140 mm (5.5") apart, using 2, ¼-20 x 2 ½" cap screws with supplied Allen Key (Fig. 14).

! NOTE ! It does not matter which set of holes are used, however if there is a Hand Grip Array installed, then use the available set of holes for adapter.

2. Repeat installation for the opposite adapter, keeping the smooth side of adapter facing outward (Fig. 15).
3. Install device onto couch top by hooking adapter onto the standoff on the accessory rails.



Fig. 15

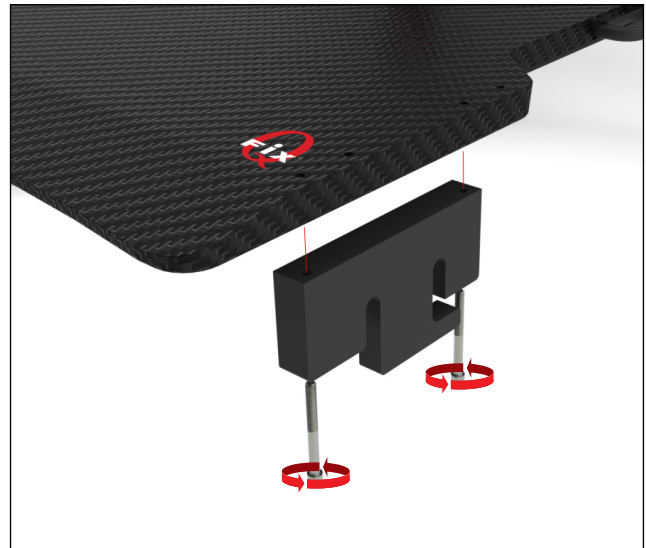


Fig. 16



Fig. 17

ADAPTER SETUP

RT-4529M

VARIAN EXACT® COMPATIBLE CT



Tools Needed: Flat Head Screwdriver



DEVICE SHOULD NOT BE CANTILEVERED OVER THE END OF THE COUCH TOP WHEN USING THIS CT ADAPTER. CANTILEVERING OVER THE END OF THE COUCH TOP MAY CAUSE THE DEVICE TO FALL OFF OF THE COUCH TOP, INJURING THE PATIENT.

ADAPTER SETUP

RT-4529M

1. Install 2 locating discs on either side of the device, in two of the holes spaced 140 mm (5.5") apart, using ¼-20 x 1 ¼" screws (1 for each) (Fig. 17).

! NOTE ! It does not matter which set of holes are used, however if there is a Hand Grip Array installed, then use the available set of holes for discs.

2. Install the remaining 2 locating discs on the opposite side as the 1st two discs, in the corresponding holes, using ¼-20 x 1 ¼" screws (1 for each) (Fig. 18).

3. Install device onto couch top by aligning locating discs with the indexing notches. Press down on device until it is secure.

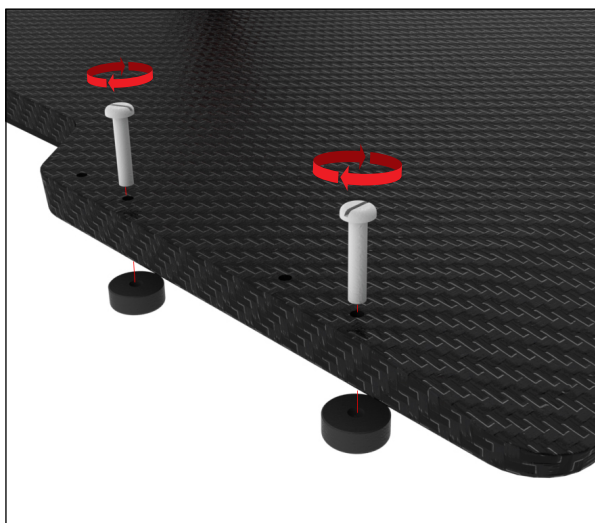


Fig. 18

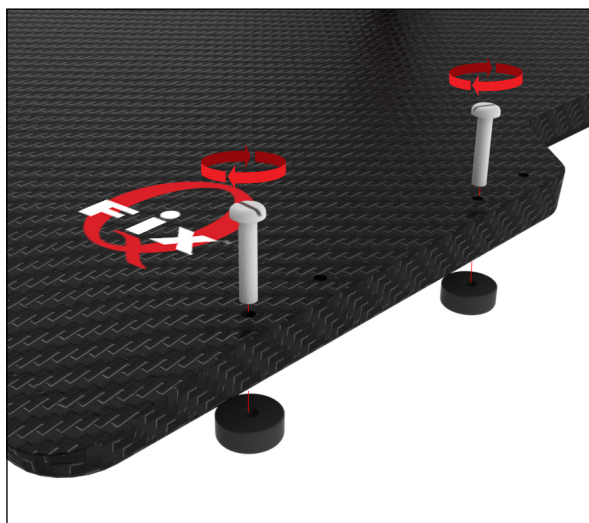


Fig. 19

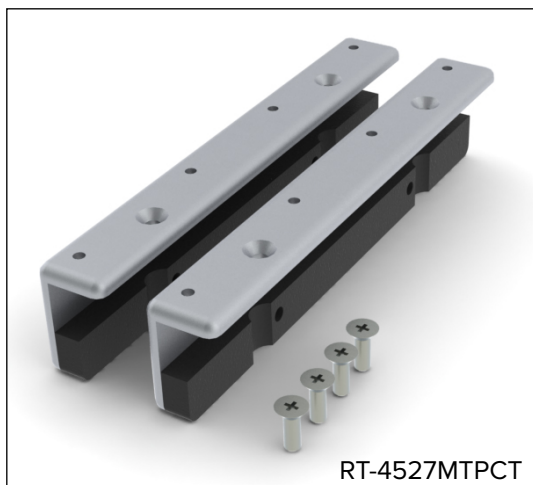


Fig. 20

ADAPTER SETUP

RT-4527MTPCT

SIEMENS/MED-TEC PRODIGY™ CT



Tools Needed: Philips Head Screwdriver



DEVICE SHOULD NOT BE CANTILEVERED OVER THE END OF THE COUCH TOP WHEN USING THIS CT ADAPTER. CANTILEVERING OVER THE END OF THE COUCH TOP MAY CAUSE THE DEVICE TO FALL OFF OF THE COUCH TOP, INJURING THE PATIENT.

ADAPTER SETUP

RT-4527MTPCT

1. Install adapter in the position shown below, in two of the holes spaced 140 mm (5.5") apart, using 2, 1/4-20 x 3/4" screws (Fig. 20 and 21).

! NOTE ! It does not matter which set of holes are used, however if there is a Hand Grip Array installed, then use the available set of holes for adapter.

2. Repeat installation for the opposite adapter, keeping the smooth side of adapter facing outward.

3. Install device by aligning the adapters with the indexing along the side of the couch top. Press down on device until it is secure.

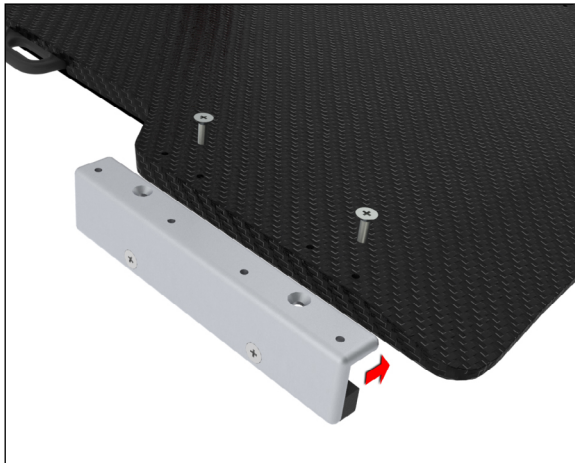


Fig. 21

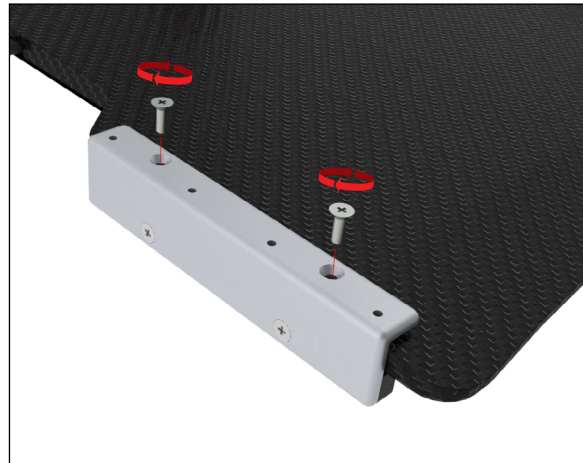


Fig. 22



Fig. 23

ADAPTER SETUP

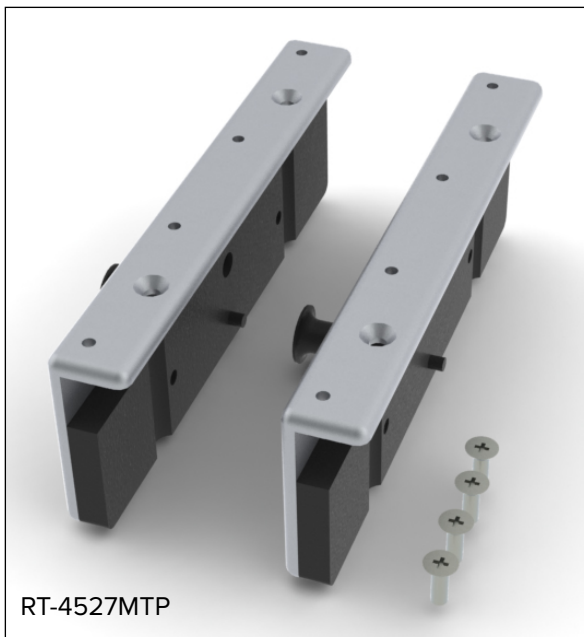
RT-4527MTP

SIEMENS/MED-TEC PRODIGY™



RT-4525L

RT-4527MTP



RT-4527MTP

Tools Needed: Philips Head Screwdriver

ADAPTER SETUP

RT-4527MTP

1. Install adapter in the position shown below, in two of the holes spaced 140 mm (5.5") apart, using 2, 1/4-20 x 3/4" screws (Fig. 24 and 25).

! NOTE ! It does not matter which set of holes are used, however if there is a Hand Grip Array installed, then use the available set of holes for adapter.

2. Repeat installation for the opposite adapter.

3. Install device by aligning the adapters with the indexing along the side of the couch top. Twist and pull the Plunger to attach/release the device onto the couch top.



Fig. 24



Fig. 25

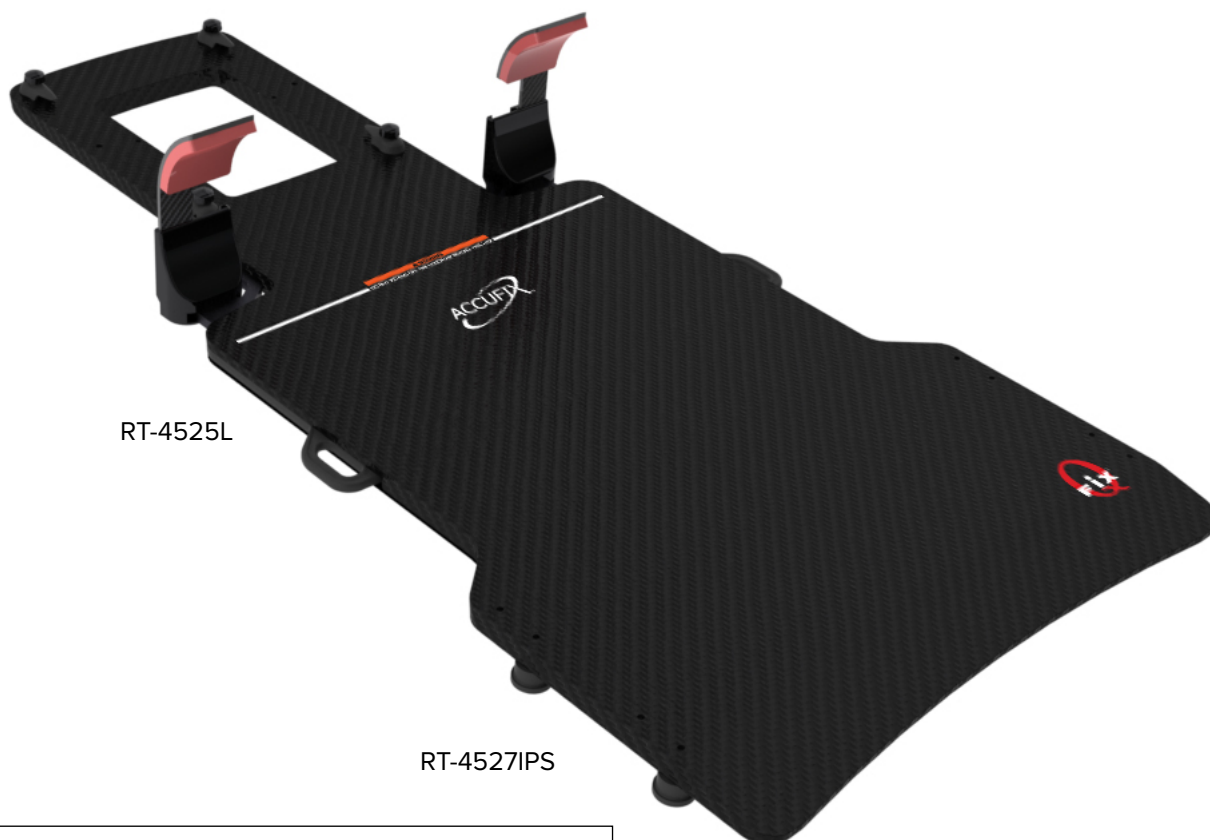


Fig. 26

ADAPTER SETUP

RT-4527IPS

SIEMENS/MED-TEC PRODIGY™



ADAPTER SETUP

RT-4527IPS

1. Install 2 locating discs (with lip) on either side of the device, in two of the holes spaced 140 mm (5.5") apart, using 1/4- 20 x 1 1/4" screws (1 for each) (Fig. 27).

! NOTE ! It does not matter which set of holes are used, however if there is a Hand Grip Array installed, then use the available set of holes for discs.

2. Install the remaining 2 locating discs (with no lip) on the opposite side as the 1st two discs, in the corresponding holes, using 1/4-20 x 1 1/4" screws (1 for each) (Fig. 28).

3. Install device onto couch top by aligning discs with indexing notches, then hook the discs that have a lip on them onto the couch top first. Press down on the other side until the device is secure.

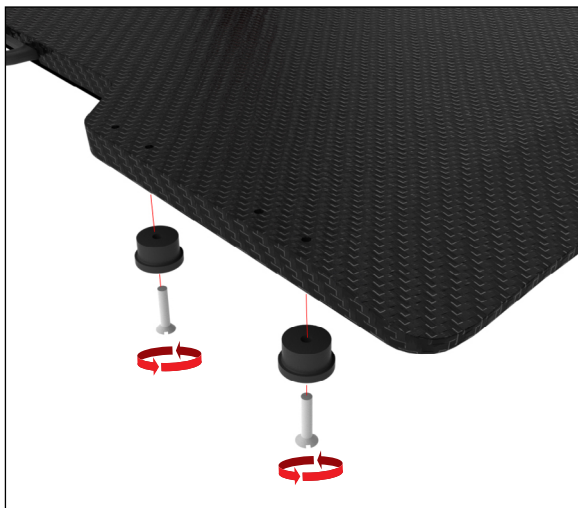


Fig. 27

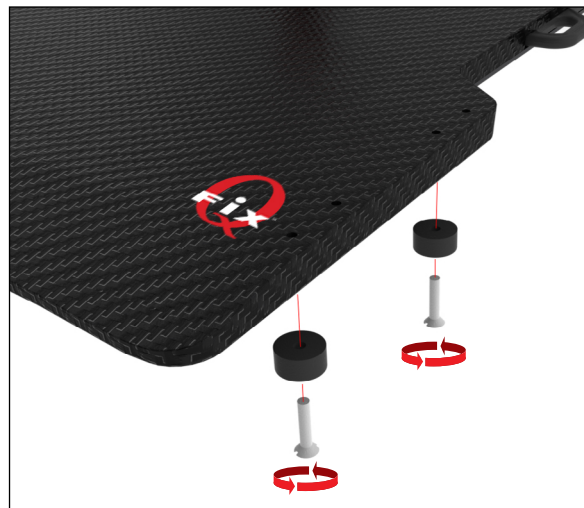


Fig. 28

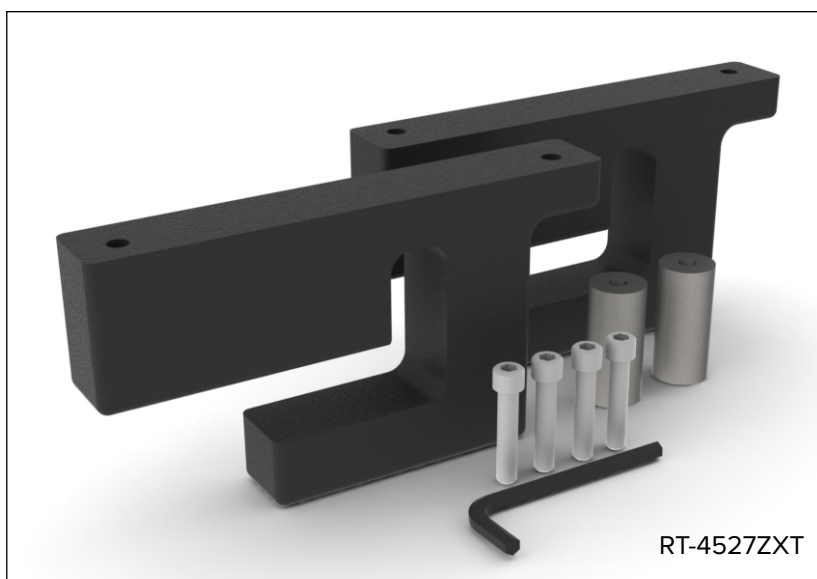


Fig. 29

ADAPTER SETUP

RT-4527ZXT

SIEMENS ZXT



ADAPTER SETUP

RT-4527ZXT

1. Replace square stand-off on ZXT Couch with supplied round stand-off. (Fig. 30)
2. Install adapter in the position shown below, in two of the holes spaced 140 mm (5.5") apart, using 2, ¼-20 x 1 ¼" cap screws with supplied Allen Key (Fig. 31).

! NOTE ! There is a right and a left adapter; be sure that once installed, the adapter is flush with the side of device. (Fig. 32).

! NOTE ! It does not matter which set of holes are used, however if there is a Hand Grip Array installed, then use the available set of holes for discs.

3. Repeat installation for the opposite adapter (Fig. 33).
4. Install device onto couch top by hooking adapter onto the standoff on the accessory rails (Fig. 34).

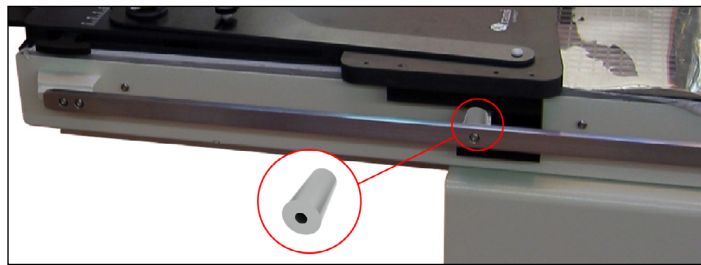


Fig. 30



Fig. 31

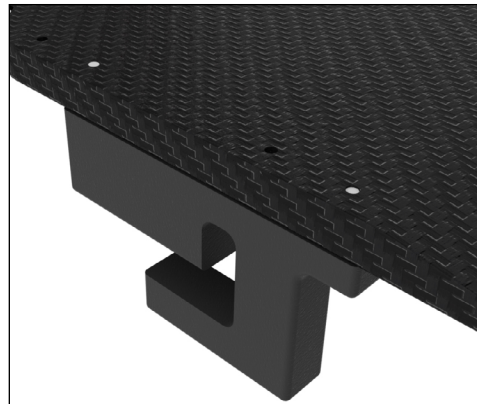


Fig. 32

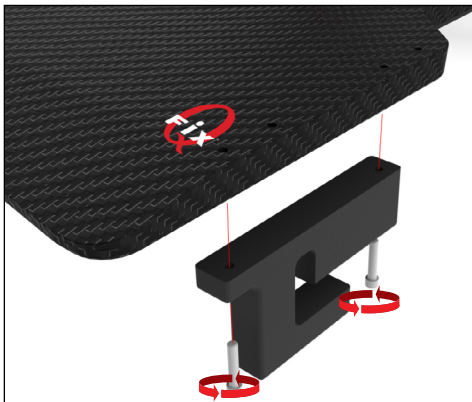


Fig. 33

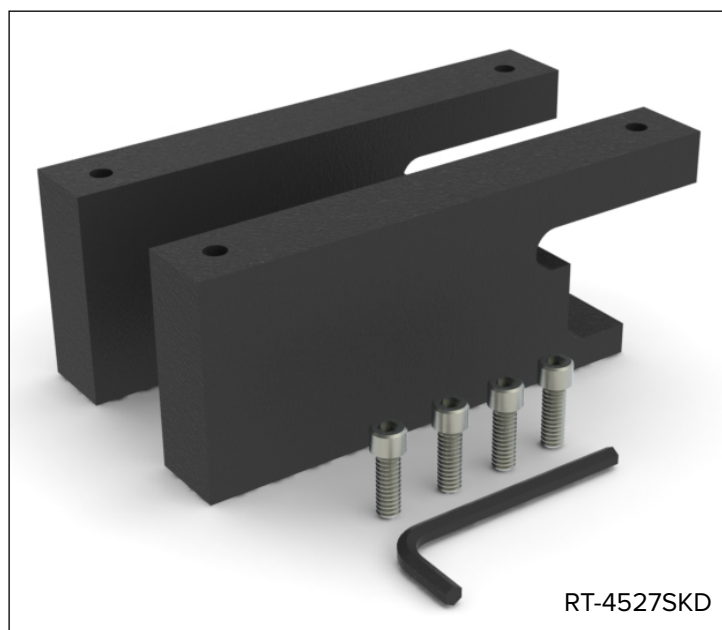
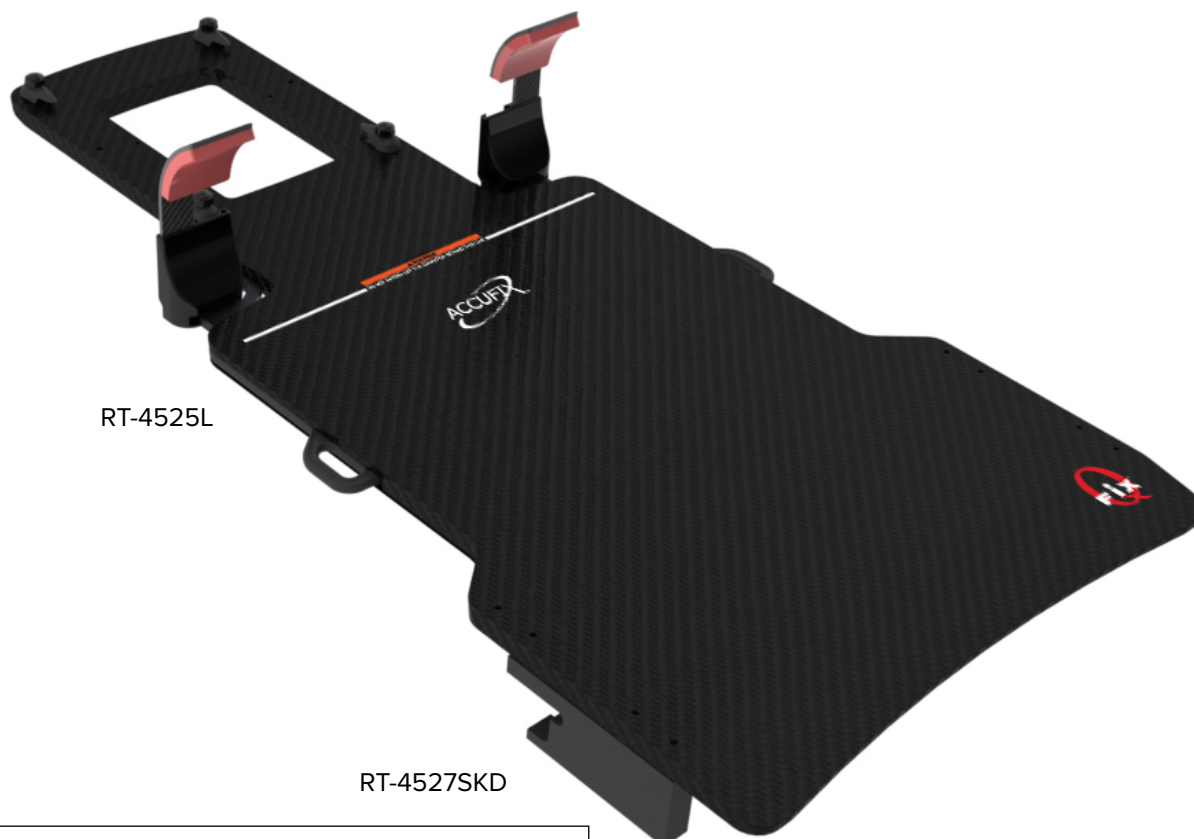


Fig. 34

ADAPTER SETUP

RT-4527SKD

SIEMENS KD



ADAPTER SETUP

RT-4527SKD

1. Install adapter in the position shown below, in two of the holes spaced 140 mm (5.5") apart, using 2, 1/4-20 x 3/4" cap screws with supplied Allen Key (Fig. 35).

! NOTE ! There is a right and a left adapter; be sure that once installed, the adapter is flush with the side of device. (Fig. 36)

! NOTE ! It does not matter which set of holes are used, however if there is a Hand Grip Array installed, then use the available set of holes for discs.

2. Repeat installation for the opposite adapter (Fig. 37).

3. Install device onto couch top by hooking adapter onto the standoff on the accessory rails.

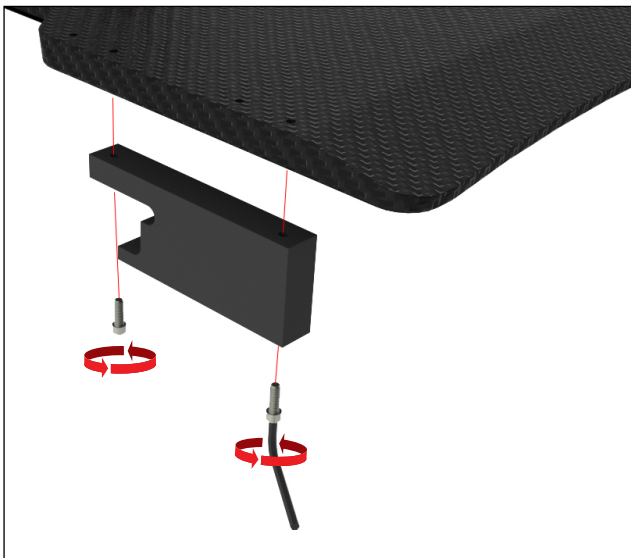


Fig. 35

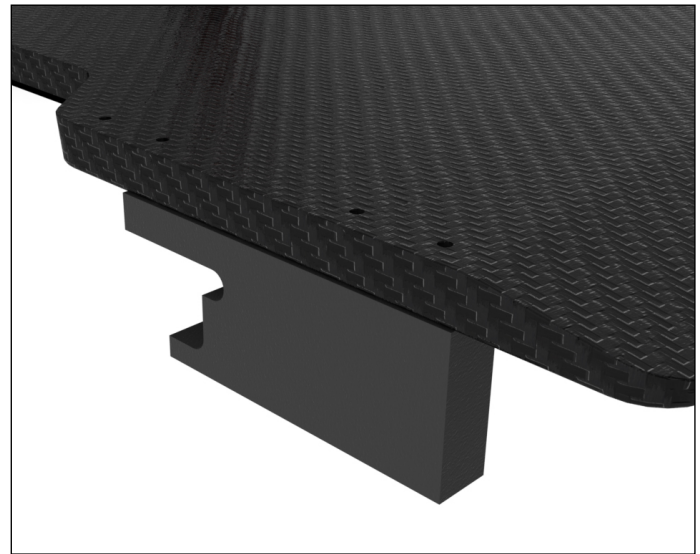


Fig. 36



Fig. 37

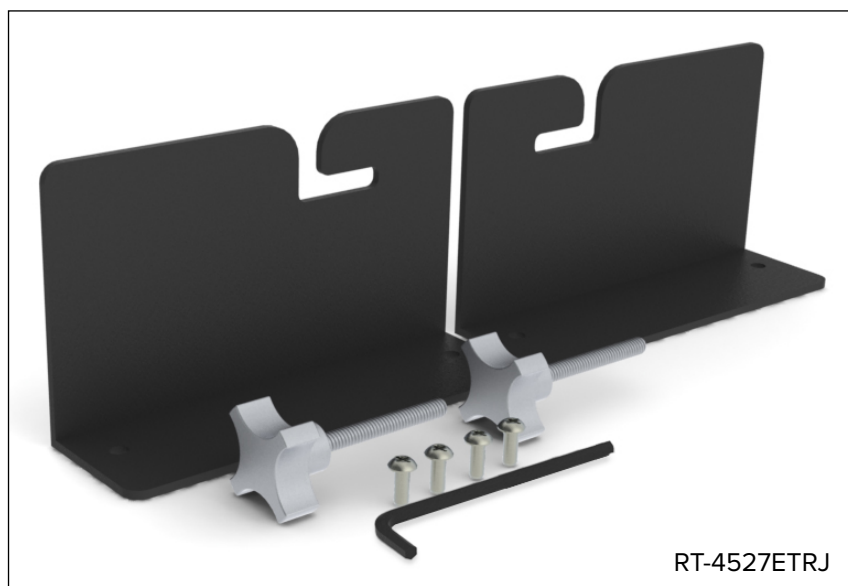


Fig. 38

ADAPTER SETUP

RT-4527ETRJ

VARIAN ETR



ADAPTER SETUP

RT-4527ETRJ

1. Remove third Allen Screw from superior end of ETR couch using supplied Allen Key. (Fig. 39).
 2. Repeat on opposite side of couch.
 3. Replace the Allen screw with the supplied knob. This knob should permanently remain as part of the couch. Do not completely tighten the knob; leave about 0.5 cm of travel (Fig. 40).
 4. Repeat on opposite side of couch.
 5. Install adapter in the position shown below, in two of the holes spaced 140 mm (5.5") apart, using 2, ¼-20 x ½" screws (Fig. 41).
- ! NOTE ! It does not matter which set of holes are used, however if there is a Hand Grip Array installed, then use the available set of holes for discs.**
6. Repeat installation for the opposite adapter (Fig. 42).
 7. Install device onto couch top by hooking adapter onto the shaft of the knob. Tighten knob to secure. (Fig. 43)



Fig. 39



Fig. 40

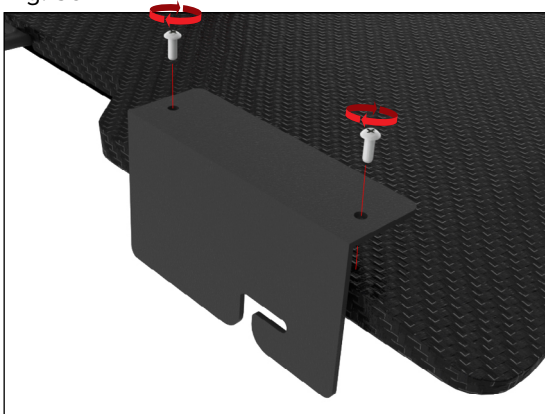


Fig. 41

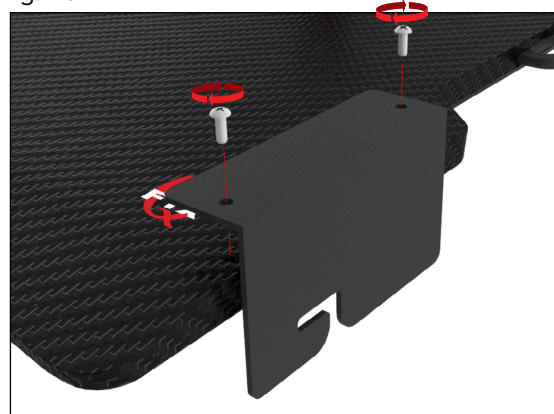


Fig. 42

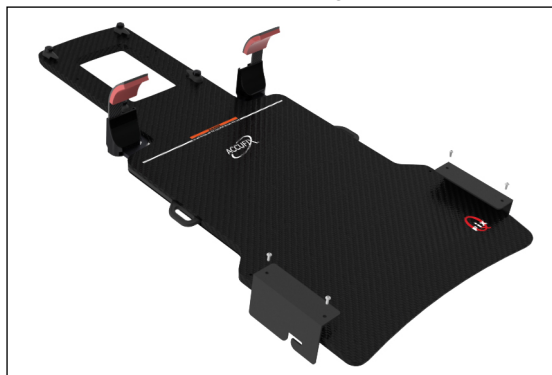
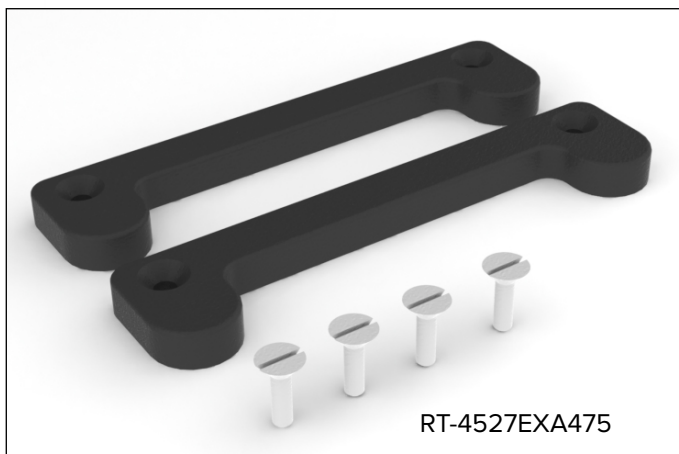
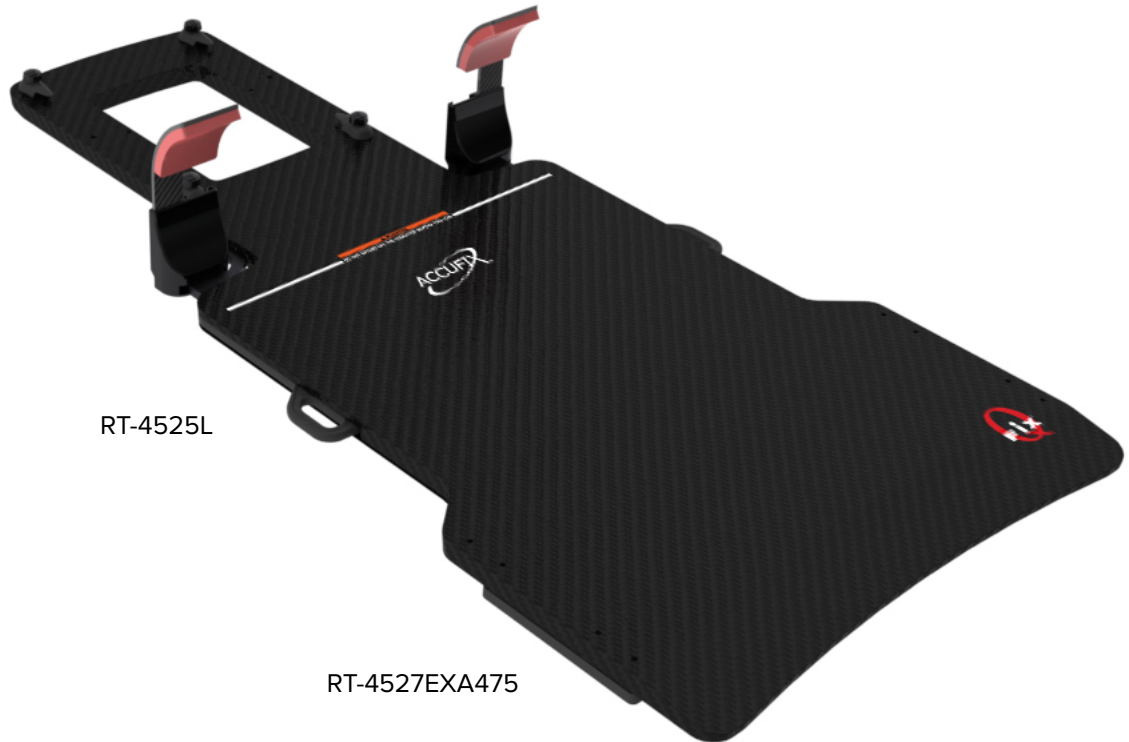


Fig. 43

ADAPTER SETUP

RT-4527EXA475

NARROW EXACT® STYLE 500 MM WIDE INDEXED CT OVERLAY



Tools Needed: Flat Head Screwdriver



DEVICE SHOULD NOT BE CANTILEVERED OVER THE END OF THE COUCH TOP WHEN USING THIS CT ADAPTER. CANTILEVERING OVER THE END OF THE COUCH TOP MAY CAUSE THE DEVICE TO FALL OFF OF THE COUCH TOP, INJURING THE PATIENT.

ADAPTER SETUP

RT-4527EXA475

1. Install adapter in the position shown below, in two of the holes spaced 140 mm (5.5") apart, using 2, 1/4-20 x 3/4" screws (Fig. 44).

! NOTE ! It does not matter which set of holes are used, however if there is a Hand Grip Array installed, then use the available set of holes for discs.

2. Repeat installation for the opposite adapter (Fig. 45).

3. Install device onto couch top by aligning adapters with the indexing notches. Press down on device until it is secure.



Fig. 44

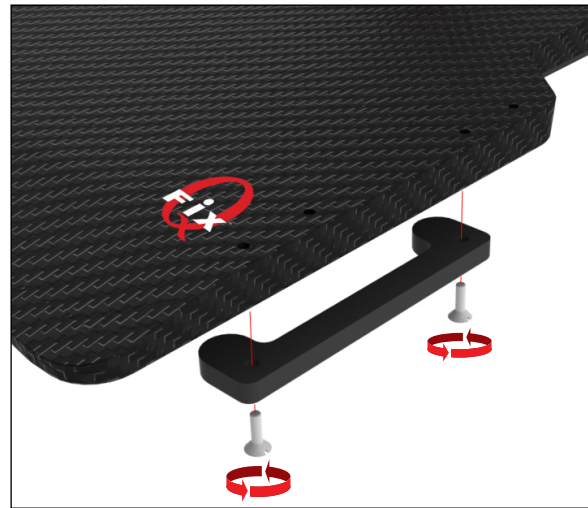


Fig. 45

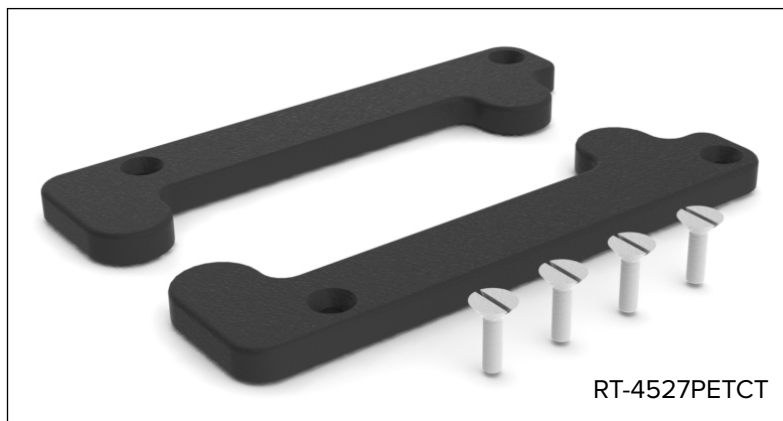


Fig. 46

ADAPTER SETUP

RT-4527PETCT

PHILIPS GEMINI™ AND GE DISCOVERY™ LS 480 MM WIDE PET/CT OVERLAY



Tools Needed: Flat Head Screwdriver



DEVICE SHOULD NOT BE CANTILEVERED OVER THE END OF THE COUCH TOP WHEN USING THIS CT ADAPTER. CANTILEVERING OVER THE END OF THE COUCH TOP MAY CAUSE THE DEVICE TO FALL OFF OF THE COUCH TOP, INJURING THE PATIENT.

ADAPTER SETUP

RT-4527PETCT

1. Install adapter in the position shown below, in two of the holes spaced 140 mm (5.5") apart, using 2, 1/4-20 x 3/4" screws (Fig. 47).

! NOTE ! It does not matter which set of holes are used, however if there is a Hand Grip Array installed, then use the available set of holes for discs.

2. Repeat installation for the opposite adapter (Fig. 48).

3. Install device onto couch top by aligning adapters with the indexing notches. Press down on device until it is secure.

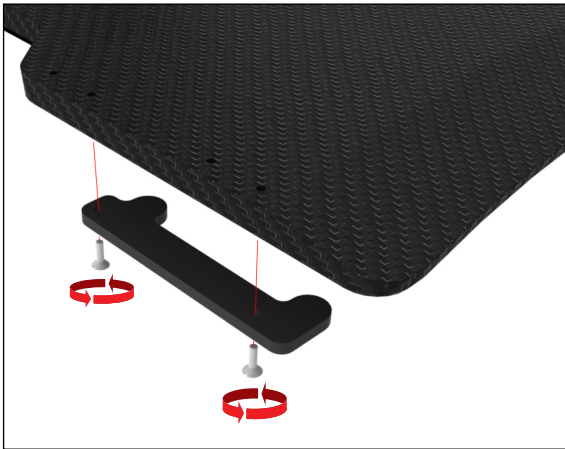


Fig. 47

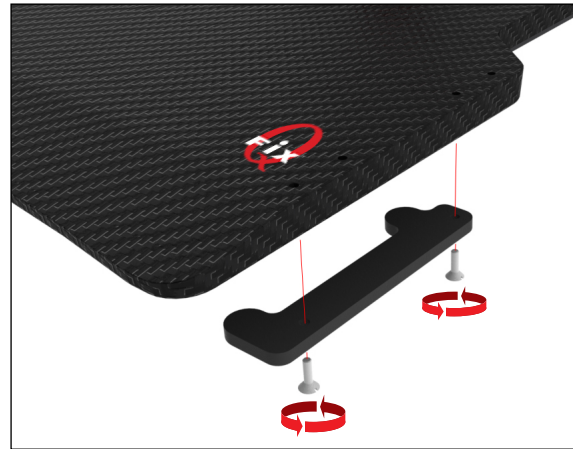


Fig. 48



Fig. 49

SHIM INSTALLATION

RT-4527PETCT

RT-4527EXA (Fig. 50)

1. Remove the 2 screws that secure the adapter to the Hand Grip Array .
2. Place shim in between adapter and hand grip array, aligning the screw holes to the holes in the shim.
3. Reinstall the two screws until secure.
4. Continue with setup instructions.

RT-4527LMI3 (Fig. 51)

1. Remove the 2 screws that secure the adapter to the Hand Grip Array .
2. Place shim in between adapter and hand grip array, aligning the screw holes to the holes in the shim.
3. Reinstall the two screws until secure.
4. Continue with setup instructions.



Fig. 50

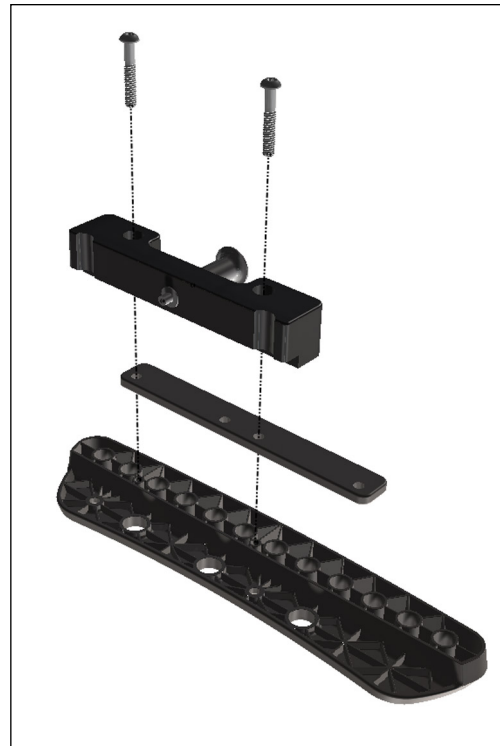


Fig. 51



440 Church Road
Avondale, PA 19311 USA
www.Qfix.com

☎ +1 610.268.0585 / 800.526.5247

🖨 +1 610.268.0588 / 800.831.8174

✉ sales@Qfix.com