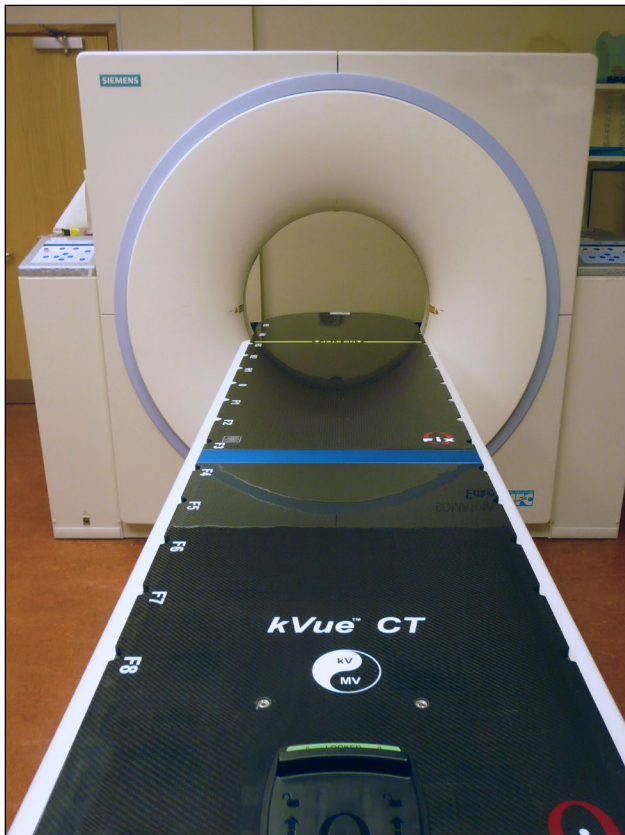




# INSTALLATION MANUAL

RT-4550SS1, RT-4550SS2, RT-4550SS3  
RT-4550KVSS1, RT-4550KVSS2, &  
RT-4550KVSS3

QUANTUM™ & kVue™ CT Overlays for Siemens



kVue CT Overlay on Siemens



QUANTUM CT Overlay on Siemens

|   |   |   |
|---|---|---|
|  <div> <div>EC</div> <div>REP</div> </div> <p>Advena Limited<br/>Tower Business Centre, 2nd Flr<br/>Tower Street, Swatar, BKR 4013<br/>Malta</p>                 |  | <p><b>UK Responsible Person</b><br/>Qfix Medical Limited<br/>3rd Floor, Chancery House<br/>St. Nicholas Way<br/>Sutton, Surrey SM1 1JB<br/>United Kingdom</p> |
|  <p><i>Made in the USA by</i><br/>Qfix<br/>440 Church Rd,<br/>Avondale, Pennsylvania, USA<br/>+1 484-720-6054 <a href="http://www.Qfix.com">www.Qfix.com</a></p> | <div> <div>CH</div> <div>REP</div> </div>   | <p>Raditec Medical AG<br/>Schlossberg 5a<br/>5454 Bellikon<br/>Switzerland</p>  |

QUANTUM and kVue are trademarks of Qfix.

# TABLE OF CONTENTS

|  |    |
|--|----|
| GENERAL PRECAUTIONS.....   | 4  |
| WARNING STATEMENTS .....   | 4  |
| ADDITIONAL WARNINGS.....   | 4  |
| WARNING LABELS & DESCRIPTIONS.....                               | 4  |
| SIEMENS SOMATOM DUO CT.....                                      | 5  |
| PARTS PROVIDED .....   | 6  |
| INSTALL FOOT PLATE.....  | 7  |
| ATTACH FOOT END LATCH ASSEMBLY MOUNTING BLOCK TO FOOT PLATE..... | 7  |
| ADJUST SUPPORT FEET ON THE FOOT END LATCH ASSEMBLY .....         | 8  |
| ADJUST HEAD END ALIGNMENT ECCENTRICS .....                       | 9  |
| CENTERING CT INSERT ON THE CT CRADLE .....                       | 11 |
| INSTALLATION VERIFICATION .....                                  | 12 |
| SIEMENS SOMATOM DEFINITION 64 .....                              | 13 |
| PARTS PROVIDED .....   | 14 |
| INSTALL FOOT PLATE.....  | 15 |
| ATTACH FOOT END LATCH ASSEMBLY MOUNTING BLOCK TO FOOT PLATE..... | 15 |
| ADJUST HEAD END ALIGNMENT BLOCK.....                             | 17 |
| INSTALLATION VERIFICATION .....                                  | 18 |
| SIEMENS SOMATOM CT .....   | 19 |
| PARTS PROVIDED .....   | 20 |
| INSTALL FOOT END LATCH ASSEMBLY MOUNTING BLOCK .....             | 21 |
| ADJUST FOOT END LATCH ASSEMBLY .....                             | 22 |
| ADJUST HEAD ALIGNMENT BLOCK.....                                 | 25 |
| ADJUST FOOT END LATCH ASSEMBLY LOCATION .....                    | 26 |
| INSTALLATION VERIFICATION .....                                  | 26 |
| SIEMENS MPT2N CRADLE .....                                       | 27 |
| PARTS PROVIDED .....   | 28 |
| INSTALLATION INSTRUCTIONS.....                                   | 29 |
| ADJUSTING THE CT OVERLAY .....                                   | 31 |
| ADJUST HEIGHT OF THE FOOT END MOUNTING BLOCK.....                | 31 |
| SIEMENS VARIO 2 RT CRADLE .....                                  | 34 |
| PARTS PROVIDED .....   | 35 |
| INSTALLATION INSTRUCTIONS.....                                   | 36 |
| ADJUSTING THE CT OVERLAY .....                                   | 37 |
| ADJUST HEIGHT OF THE FOOT END MOUNTING BLOCK.....                | 37 |

# GENERAL PRECAUTIONS

## WARNING STATEMENTS

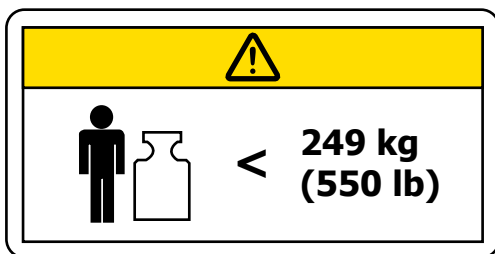
**! WARNING ! NO MODIFICATION OF THIS EQUIPMENT IS ALLOWED. IF ANY PART OF THIS DEVICE EXPERIENCES A CATASTROPHIC LOAD, APPEARS DAMAGED OR FUNCTIONS IMPROPERLY, DISCONTINUE USE IMMEDIATELY AND CONTACT QFIX AT +1 484-720-6053 OR TECHSUPPORT@QFIX.COM.**

## ADDITIONAL WARNINGS

- DO NOT exceed pedestal manufacturer's load rating.
- Maximum patient weight of 550 pounds (249 kg) or pedestal load rating, whichever is less.
- Pinch points may exist and are indicated on CT Overlay.
- Attention is necessary when moving the cradle and CT Insert into the Gantry Bore to ensure that pinch point risk to hands and fingers are avoided.
- Use of this product in a manner not specified in the User Manual or Installation Manual may be unsafe and is not recommended.
- Use of unapproved devices or attachments may be unsafe and is not recommended.

## WARNING LABELS & DESCRIPTIONS

Refer to [Qfix.com](http://Qfix.com) for a listing of symbols and their definitions.



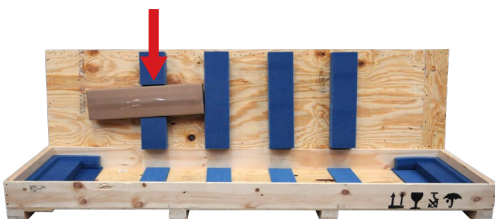
### LOAD RATING

DO NOT exceed 249 kg (550 lb) uniformly distributed load.



### PINCH POINTS

Pinch points may exist and are indicated by this symbol.

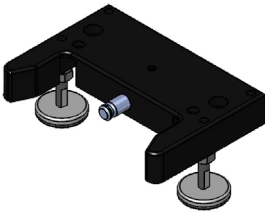
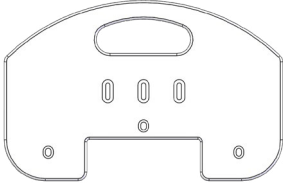

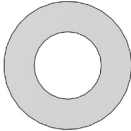

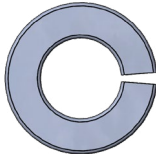
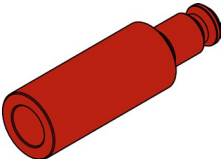
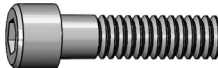
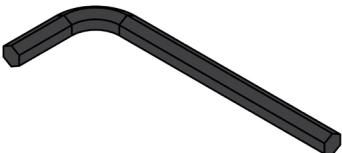


Hardware kit for CT is located in a cardboard box in the lid of the crate, indicated by the photo on the left.

# SIEMENS SOMATOM DUO CT INSTALLATION MANUAL

# INSTALLATION

## PARTS PROVIDED

|  |  |
|--|--|
|  <p>(1) Foot End Latch Assembly</p> |  <p>(1) Foot Plate</p>                      |
|  <p>(1) Qfix Locating Bar</p>       |  <p>(3) 3000205, Flat Washer # 10</p>       |
|  <p>(1) Centering Fixture</p>     |  <p>(3) 3000288, Lock Washer # 10</p>     |
|  <p>(1) Alignment Pin</p>         |  <p>(3) 3000193, 10-32 x .75" SHCS SS</p> |
|  <p>(1) 5/32" Allen wrench</p>    | <p><b>TOOLS REQUIRED (not provided):</b></p> <p>7/16" wrench<br/>Coin, US Quarter or Equal</p>                                 |

# INSTALLATION

## INSTALL FOOT PLATE

1. Remove existing Siemens Foot Plate. Retain fasteners for reuse (Fig. 1).



Fig. 1

2. Install Qfix Foot Plate using Siemens fasteners (Fig. 2).

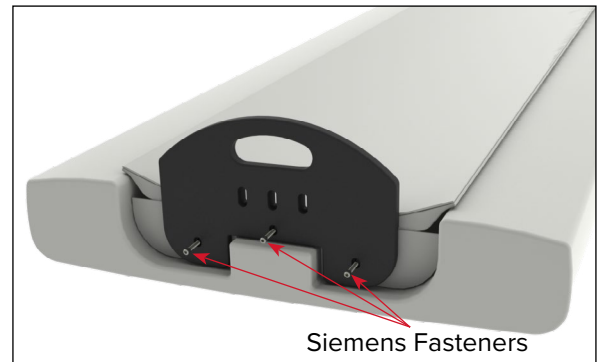


Fig. 2

## ATTACH FOOT END LATCH ASSEMBLY MOUNTING BLOCK TO FOOT PLATE

1. Position CT Overlay on Siemens Table with the Foot End Latch Assembly Mounting Block a few inches from contacting Foot Plate and CT Overlay is centered on Siemens Table (Fig. 3).

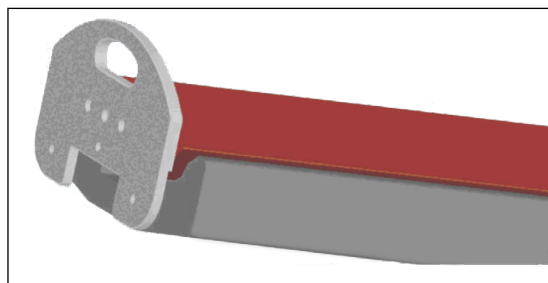


Fig. 3

# INSTALLATION

- Using (3) 10-32 x 0.75" long screws with washers and lock washers provided, secure the Foot End Latch Assembly Mounting Block to the foot plate with Allen wrench provided (Fig. 4 & 5). Do not tighten screws completely.

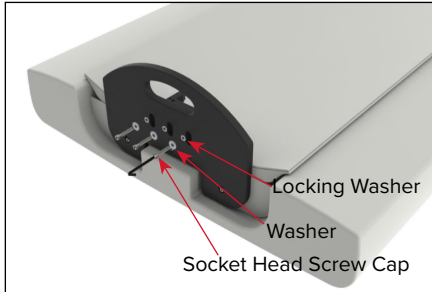


Fig. 4

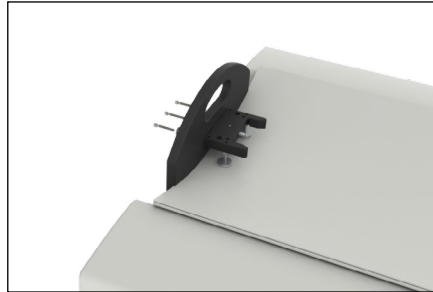
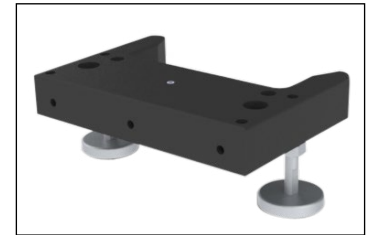


Fig. 5



Back of Foot Latch Assembly

## ADJUST SUPPORT FEET ON THE FOOT END LATCH ASSEMBLY

- Slide the CT Overlay away from the foot end (Fig. 6).
- Attach the red Alignment Pin to the Foot End Pin Block (Fig. 7).
- Adjust support feet on the Foot End Pin Assembly Mounting Block to contact the table (Fig. 7).
- Slide the CT Assembly in and out while aligning the red pin on to the CT Release Latch. Alignment can be performed by adjusting the feet height on the Foot End Pin Assembly.
- Once red pin inserts and ejects easily, secure the locking nuts using the  $\frac{7}{16}$ " wrench (Fig. 8).
- Remove the red Alignment Pin from the CT by pulling back on the release handle in the direction indicated by the unlock symbol.
- Slide the CT Overlay all the way toward the foot end until the handle confirms it is locked on. When only green shows and no red, it is "LOCKED".
- To remove, pull/push on the handle to unlock and continue to push the CT 3–4 inches away from the latch.

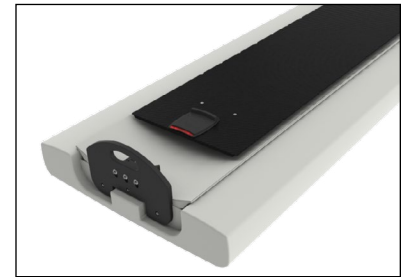


Fig. 6

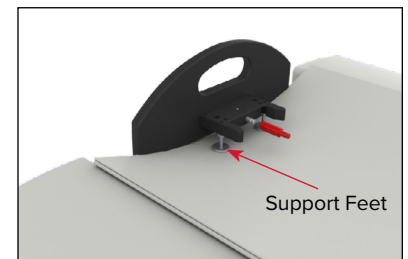


Fig. 7

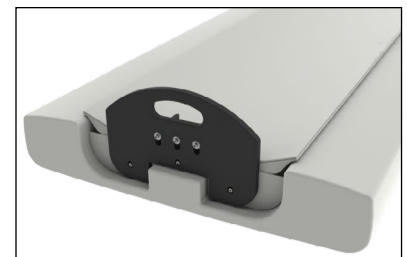


Fig. 8



# INSTALLATION

## ADJUST HEAD END ALIGNMENT ECCENTRICS

The Head End Alignment Eccentrics provide a center and gripping action for the CT Overlay Head End to the CT cradle. As you rotate the Eccentrics equally on both sides of the CT Overlay you can adjust the fit to the CT cradle. A fit that holds CT Overlay firmly centered and which also slides on/off the CT cradle is the goal of the adjustment (Fig. 9 & 10).

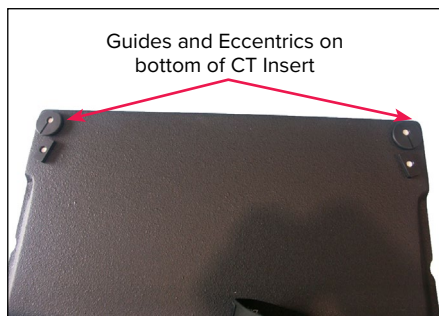


Fig. 9

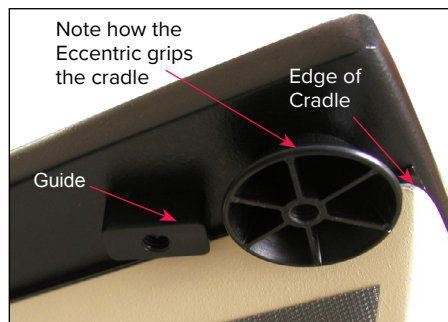


Fig. 10

1. Set the CT Overlay on CT cradle overhanging the head end by 3–4 in (Fig. 11).
2. Align the CT Overlay on the centerline of the CT cradle (Fig. 12).

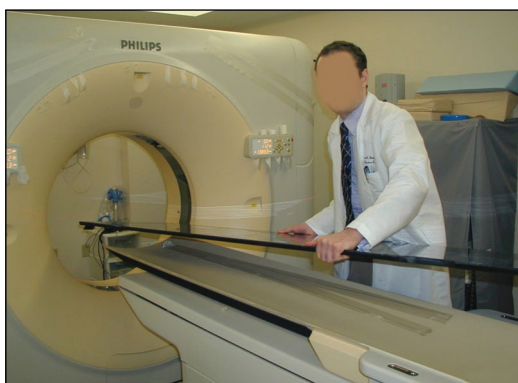


Fig. 11



Fig. 12

# INSTALLATION

- Slide towards CT cradle Foot End engaging the Foot Latch Assembly. Do not lock the Latch Assembly. Looking at the Eccentrics from below, rotate them until the CT Overlay holds the CT cradle firmly centered and also slides on/off the CT cradle (Fig. 13).

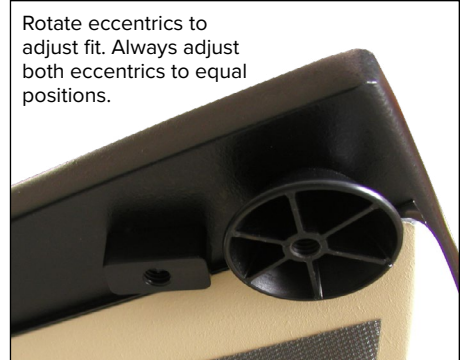


Fig. 13

- Tighten the plastic flat head screw using a coin to firmly secure the eccentrics (Fig. 14).

**! NOTE !** The Head Alignment Eccentrics are shipped with the maximum clearance to the CT cradle.



Fig. 14

- Test the adjustments for fit and sliding action and also test the latching action. Unit should lock and unlock properly.

# INSTALLATION

## CENTERING CT INSERT ON THE CT CRADLE

1. Install the Locating Bar on the CT Overlay and then set the Centering Fixture Bar on the Locating Bar at the head end of the CT Overlay (Fig. 15).

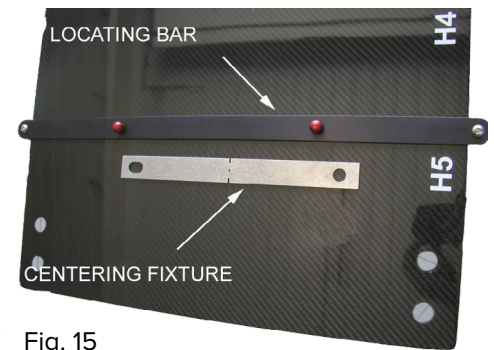


Fig. 15

2. Use the CT Laser Alignment system to determine where the alignment beam hits the Centering Fixture guide slits (Fig. 16).



Fig. 16

3. Rotate each Eccentric until the CT Overlay holds the CT cradle firmly centered in the alignment beam and also slides on/off the CT cradle.

# INSTALLATION

## INSTALLATION VERIFICATION

1. Verify the cradle can travel the full length of the “Z” axis without issue. Repeat for both mechanical and manual movement (Fig. 17).
2. Verify that the QA phantom holder can attach/detach to the CT without issue.
3. Verify the cradle can travel the full height of the ‘Y’ axis without issue (Fig. 17).

**! NOTE ! Qfix recommends running a test scan at iso-center following installation verification.**

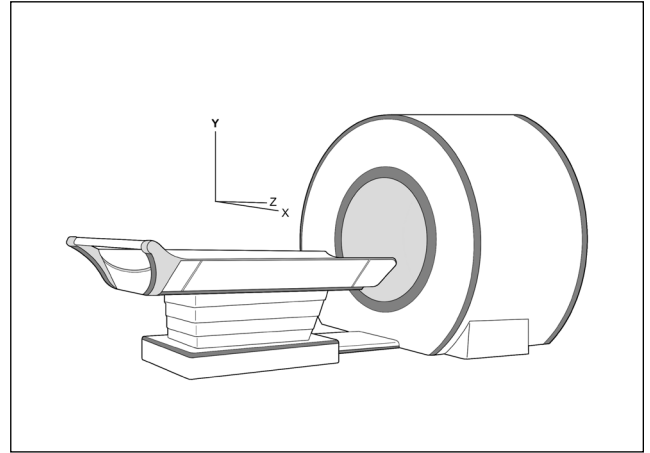


Fig. 17

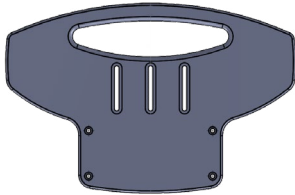
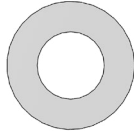




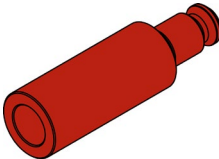
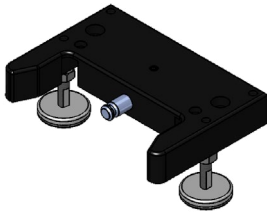
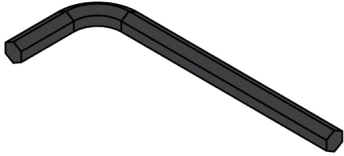
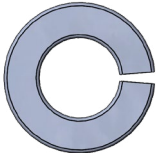
# **SIEMENS**

# **Somatom Definition 64**

# **INSTALLATION MANUAL**

# INSTALLATION

## PARTS PROVIDED

|  |  |
|--|--|
|  <p>(1) SSD 64 Foot End Plate</p>       |  <p>(3) 3000205, Flat Washer # 10</p>   |
|  <p>(1) Qfix Locating Bar</p>           |  <p>(4) 3001783, M6 x 30 x 1 mm SHCS SS &amp;<br/>(4) 3001789, M6 x 35 x 1 mm SHCS SS</p> |
|  <p>(1) Centering Fixture</p>           |  <p>(3) 3000193, 10-32 x .75" SHCS SS</p>   |
|  <p>(1) Alignment Pin</p>             |  <p>(1) Foot Latch Assembly</p>   |
|  <p>(1) 3/16" Allen wrench</p>        | <p><b>TOOLS REQUIRED (not provided):</b></p> <p>7/16" wrench<br/>5 mm Socket<br/>US Quarter, or Equal</p>  |
|  <p>(3) 3000288, Lock Washer # 10</p> |  |

# INSTALLATION

## INSTALL FOOT PLATE

1. Remove existing Siemens Foot Plate. Retain fasteners for reuse.
2. Install Foot Plate using the M6 x 35 mm SHCS provided (Fig. 18).

**! NOTE ! M6 x 30 mm SHCS may be required on certain cradles.**

## ATTACH FOOT END LATCH ASSEMBLY MOUNTING BLOCK TO FOOT PLATE

1. Position the CT Overlay on the Siemens cradle with foot end, Foot End Latch Assembly Mounting Block, a few inches from contacting Foot End Plate and CT Overlay is centered on Siemens cradle (Fig. 19).
2. Using (3) 10-32 x 0.75" long screws with washers and lock washers provided, secure the Foot Plate to the Foot End Latch Assembly Mounting Block. Do not tighten screws completely. Once step 7 is complete, screws can be tightened completely (Fig. 20).

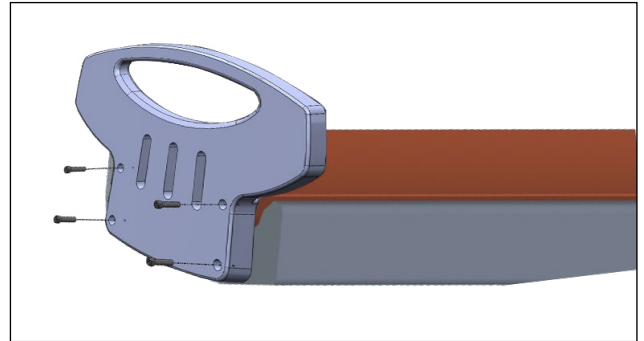


Fig. 18

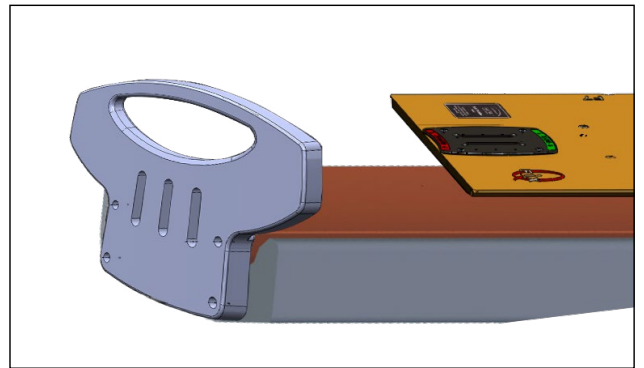


Fig. 19

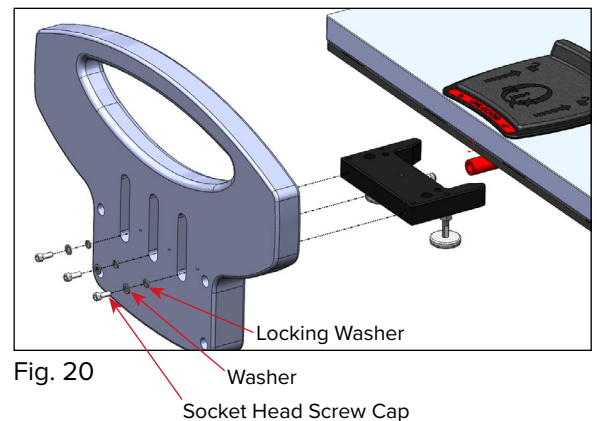


Fig. 20

# INSTALLATION

3. Place the red Alignment Pin into the CT latch until it reads “LOCKED” (Fig. 21).
4. Adjust the support feet on the Foot End Assembly Mounting Block to contact the table in order to align.
5. Now slide the CT Overlay in and out while aligning the red Alignment Pin onto the CT release latch.
6. Once red Alignment Pin inserts and ejects easily, secure the locking nuts using the  $\frac{7}{16}$ " Wrench.
7. Loosen screws and adjust feet on Foot End Latch Assembly Mounting Latch as needed, to align CT latch to red Alignment Pin. CT Overlay will attach and release from CT latch smoothly and without binding.
8. Remove the red Alignment Pin from the CT by pulling back on the release handle in the direction indicated by the unlock symbol.
9. Slide the CT Overlay all the way toward the foot end until the handle confirms it is locked on. When only green shows and no red, it is “LOCKED”.
10. To remove, pull/push on the handle to unlock and continue to push the CT 3–4 inches away from the latch.



Fig. 21



# INSTALLATION

## ADJUST HEAD END ALIGNMENT BLOCK

1. Install Head Alignment Block on the CT Overlay (IF NOT ALREADY INSTALLED) using 3 Plastic  $\frac{3}{8}$ -12 x 1.25" Flat Head Screws provided. You can use a Quarter or a Flat Head Screwdriver to loosen or tighten screws (Fig. 22).

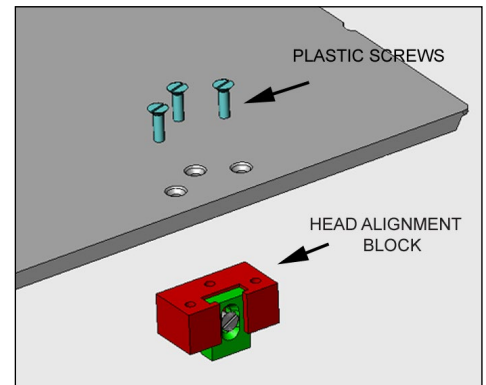


Fig. 22

2. Adjust the locking tab height by loosening the Plastic  $\frac{3}{8}$ -12 x 1.25" flat head screw, so the tab goes into the CT mating slot (Fig. 23).
3. Lock using the Plastic  $\frac{3}{8}$ -12 x 1.25" Flat Head Screw assembly.

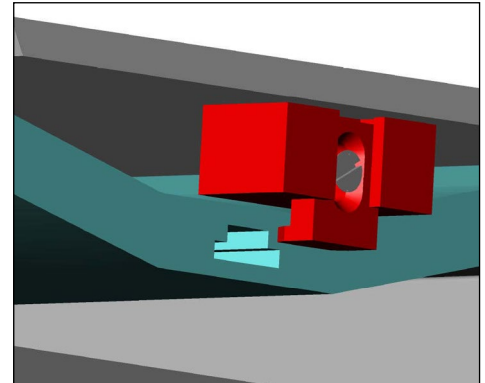


Fig. 23

4. Set the CT Overlay, centered left to right, on the CT cradle with 3–5 inches overhanging the CT Head End (Fig. 24).



Fig. 24

# INSTALLATION

- Slide the CT Overlay towards the CT cradle Foot End until the locking tab is securely in the CT cradle accessory mounting hole upper cavity. (This alignment will provide CT end left, right and vertical securing) (Fig. 25).

**! NOTE !** If excessive lateral movement is present at the head end of the CT overlay, replace the tongue portion of the head end alignment block with Part Number 2007474 provided.

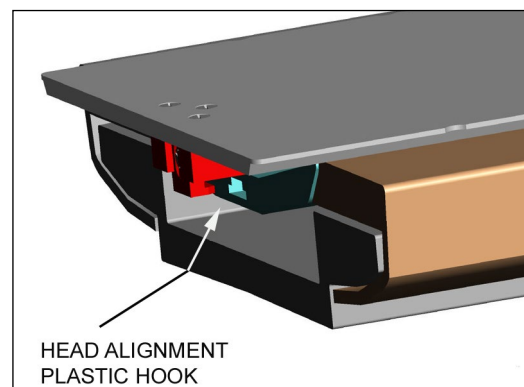


Fig. 25

## INSTALLATION VERIFICATION

- Verify the cradle can travel the full length of the “Z” axis without issue. Repeat for both mechanical and manual movement (Fig. 26).
- Verify that the QA phantom holder can attach/detach to the CT without issue.
- Verify the cradle can travel the full height of the ‘Y’ axis without issue (Fig. 26).

**! NOTE !** Qfix recommends running a test scan at iso-center following installation verification.

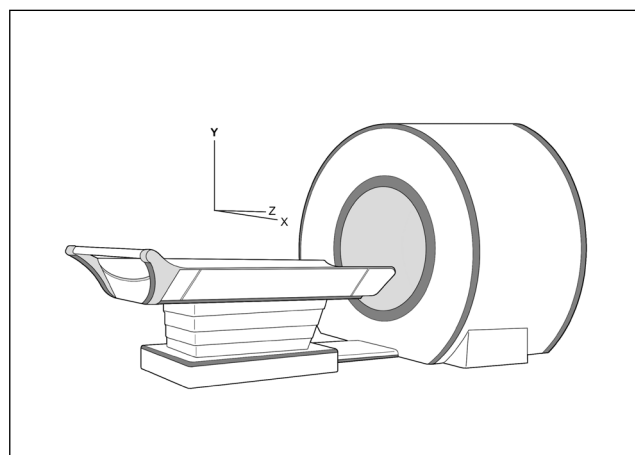


Fig. 26

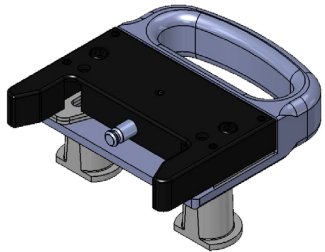
# **SIEMENS**

# **Somatom CT**

# **INSTALLATION MANUAL**

# INSTALLATION

## PARTS PROVIDED



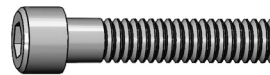
(1) Foot End Latch Assembly



(1) 1/8" Allen wrench



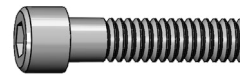
(1) Qfix Locating Bar



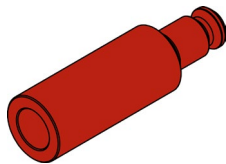
(2) 3000270, 1/4-20 x 1.25" SHCS SS  
(extras – if needed)



(1) Centering Fixture



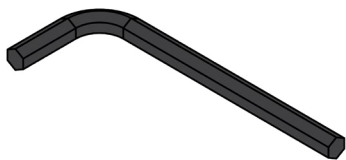
(2) 3000259, 1/4-20 x 1.125" SHCS SS  
(extras – if needed)



(1) Alignment Pin

### TOOLS REQUIRED (not provided):

US Quarter or Equal

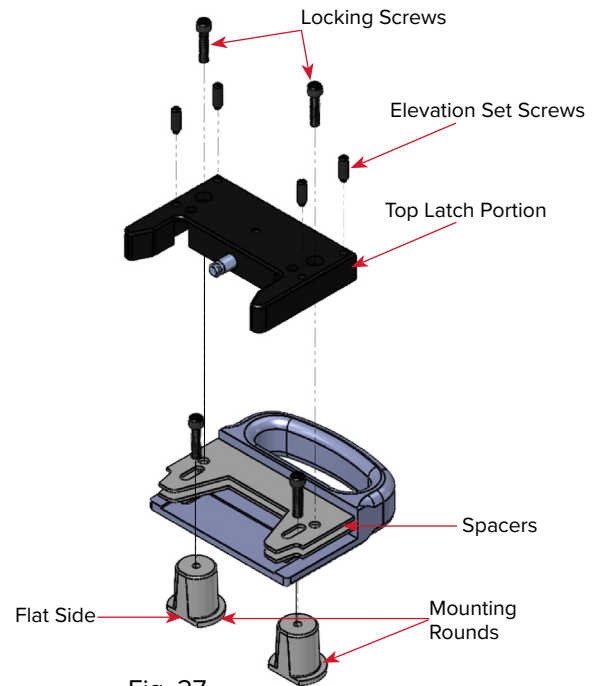


(1) 3/16" Allen wrench

# INSTALLATION

## INSTALL FOOT END LATCH ASSEMBLY MOUNTING BLOCK

1. Position Foot End Handle Mounting Assembly on Siemens table over the handle in the CT cradle. There are (2) ¼-20 x 1" SHCS screws shipped assembled in the CT Foot End Handle Mounting Assembly to secure the Mounting Rounds.
2. Remove the top portion of the Latch by removing the top ¼-20 screws. Proceed to un-attach the Mounting Rounds from the assembly (Fig. 27). (You may need to move the spacers to remove the Mounting Rounds. Keep all parts together).



3. Install the Mounting Round through the table handle from below. Point the flat end towards the head of the CT cradle. You will need to un-assemble the latch shown above to do this (Fig. 28 & 29).



Fig. 28

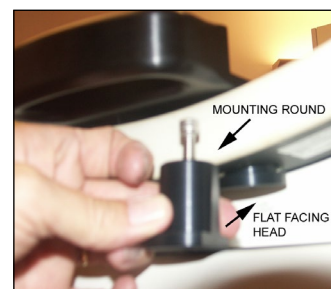


Fig. 29

# INSTALLATION

4. Re-assemble the latch, as shown in A1, and secure the handle to the Mounting Rounds using (2) ¼-20 x 1" SHCS, DO NOT TIGHTEN COMPLETELY — allow for sliding adjustment. Access the SHCS through the hole in the Foot End Handle Mounting Assembly (Fig. 30).



Fig. 30

## ADJUST FOOT END LATCH ASSEMBLY

The objective is to verify that the Red Alignment Pin, inserted on the CT cradle, can slide freely onto the Foot Latch Mounting Block without binding (Fig. 31).

1. Push the male end of the red Alignment Pin into the socket in the block on the underside of the CT Overlay (Fig. 32) until the handle on the topside reads "LOCKED" (Fig. 33).
2. Place the CT Overlay on the CT cradle overhanging the head end by 3–4 inches (Fig. 34). Align the CT Overlay on the centerline of the CT cradle (Fig. 35).

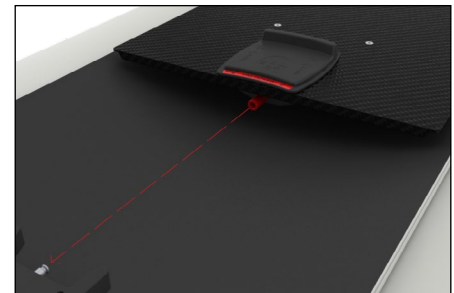


Fig. 31



Fig. 32



Fig. 33

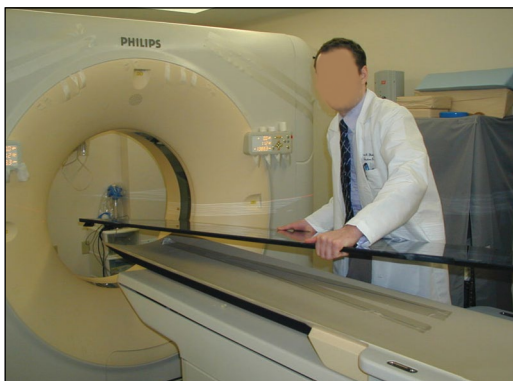


Fig. 34

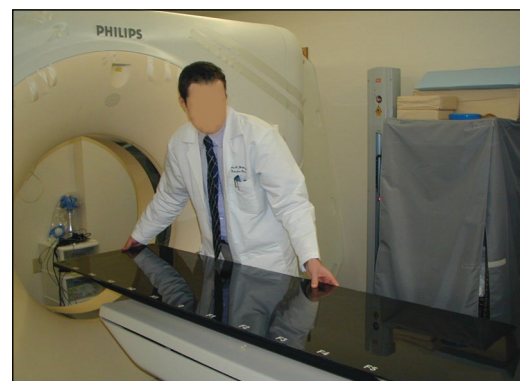


Fig. 35

# INSTALLATION

- Slide the CT Overlay towards the CT cradle Foot End until the red Alignment Pin is close to the metal pin on the Foot End Mounting Assembly (Fig. 36).

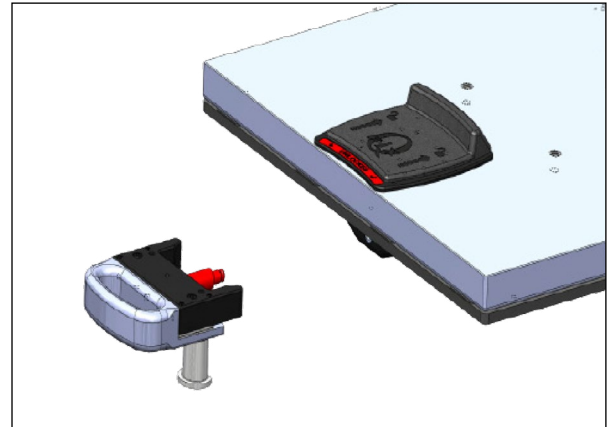


Fig. 36

- Adjust the height of the Mounting Block Pin using the (4) Elevation Set Screws (found on the block) using the  $\frac{1}{8}$  in. Allen wrench provided (Fig. 37).

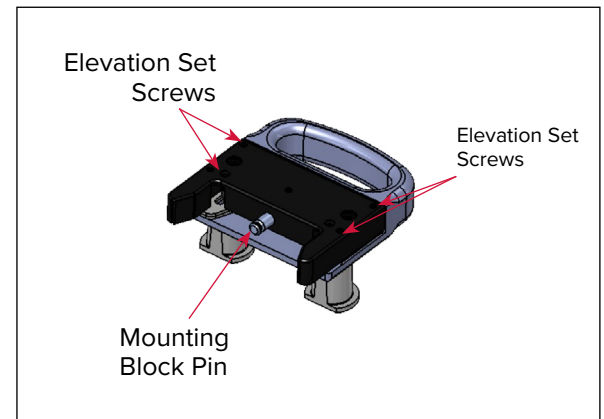


Fig. 37

- Engage the Mounting Block Pin into the red Alignment Pin and re-tighten the screws while holding the Mounting Block parallel, from side to side, to the CT bottom. The CT should engage and disengage the Mounting Block Pin without binding.
- Lock the Foot Latch Mounting Block by tightening the (2)  $\frac{1}{4}$ -20 x 1 Locking Screws using  $\frac{3}{16}$  in. Allen wrench provided.
- Check that the Foot Latch Mounting Block is parallel to the Spacer Plate as the screws are tightened. If longer bolts are needed, (2)  $\frac{1}{4}$ -20 x 1.25" Locking Screws are supplied.
- Verify that the CT can be used on and off the Mounting Block Pin without binding by moving the CT back and forth. Make sure the CT is staying centered on the cradle while doing this. Verify that the Mounting Block Pin is parallel to the Alignment Pin and at the correct height.
  - If the Alignment Pin is binding, you may adjust the tilt of the Mounting Block Pin by first loosening the Mounting Block Screws. Then equally adjust the two Locking Screws up or down with the  $\frac{1}{8}$  in Allen wrench to change the tilt until lever with the Alignment Pin and the CT cradle, Gently re-tighten the two Mounting Block Screws. DO NOT OVERTIGHTEN. Go back to Step 2.



# INSTALLATION

9. Remove the red Alignment Pin from the CT by pulling back on the release handle in the direction indicated by the unlock symbol (Fig. 38).
10. Slide the CT Overlay all the way towards the foot end until the handle confirms it is locked on. When only green shows and no red, it is “LOCKED” (Fig. 39).



Fig. 38



Fig. 39

11. To remove, pull/push on the handle to unlock and continue to push the CT 3–4 inches away from the latch.



# INSTALLATION

## ADJUST HEAD ALIGNMENT BLOCK

1. Install Head Alignment Block on the CT Overlay (IF NOT ALREADY INSTALLED) using 3 Plastic  $\frac{3}{8}$ -12 x 1.25" Flat Head Screws provided. You can use a Quarter or a Flat Head Screwdriver to loosen or tighten screws (Fig. 40).
2. Adjust the locking tab height by loosening the Plastic  $\frac{3}{8}$ -12 x 1.25" flat head screw, so the tab goes into the CT mating slot (Fig. 41).
3. Lock using the Plastic  $\frac{3}{8}$ -12 x 1.25" Flat Head Screws in the assembly.
4. Set the CT Overlay, centered left to right, on the CT cradle with 3–5 inches overhanging the CT Head End (Fig. 42).

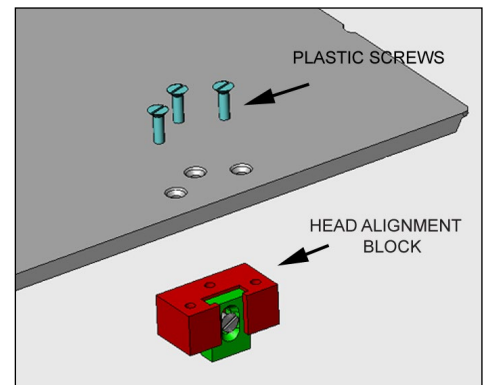


Fig. 40

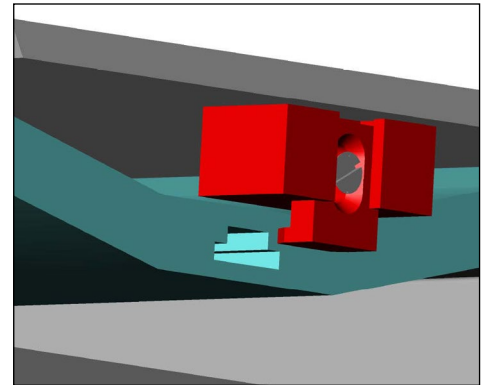


Fig. 41



Fig. 42

# INSTALLATION

- Slide the CT Overlay towards the CT cradle Foot End until the locking tab is securely into the CT cradle accessory mounting hole upper cavity. (This alignment will provide CT end left, right and vertical securing) (Fig. 43).

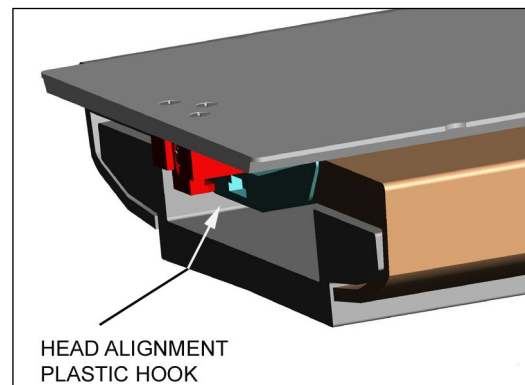


Fig. 43

## ADJUST FOOT END LATCH ASSEMBLY LOCATION

- It may be necessary to re-adjust the Foot End Handle Mounting Assembly. See Section “Adjust Foot End Latch Assembly” on page 22 for adjustment instructions.
- Once it is adjusted, slide the CT into place.
- Latch on foot end, it should be in “LOCKED” position (Fig. 44).



Fig. 44

## INSTALLATION VERIFICATION

- Verify the cradle can travel the full length of the “Z” axis without issue. Repeat for both mechanical and manual movement (Fig. 45).
- Verify that they QA phantom holder can attach/detach to the CT without issue.
- Verify the cradle can travel the full height of the ‘Y’axis without issue (Fig. 45).

**! NOTE ! Qfix recommends running a test scan at iso-center following installation verification.**

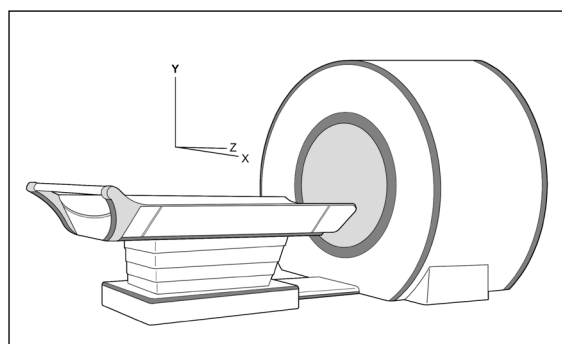


Fig. 45

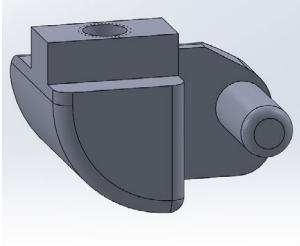
# **SIEMENS**

# **MPT2n Cradle**

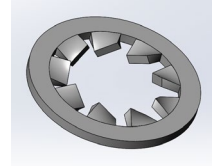
# **INSTALLATION MANUAL**

# INSTALLATION

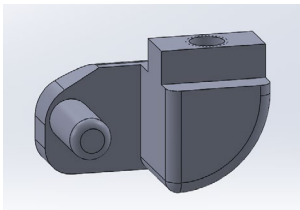
## PARTS PROVIDED



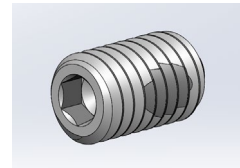
(1) 2007780, Edge Block, Right



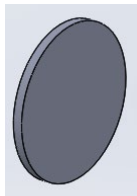
(2) 3002137, M5 toothed washer



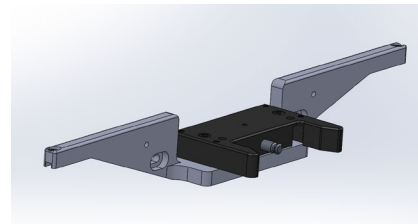
(1) 2007805, Edge Block, Left



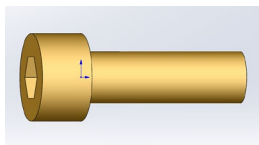
(2) 3002138, Set Screw, Locking,  
M6 x 1 x 10 mm



(2) 3002136, Adhesive backed disc,  
25 mm Diameter, 1.5 mm thick



(1) Latch Assembly



(2) 3001053, Socket Head Cap Screw  
M5 x 08 x 16 mm

# INSTALLATION

## INSTALLATION INSTRUCTIONS

1. Install P/N 3002136. Place a pencil mark on the rear cover 19 mm down from the top edge and 106 mm from the left edge as shown in the picture. Place another mark 19 mm down from the top edge and 106 mm from the right edge. Remove backing from adhesive and adhere to rear cover centered over the marks (Fig. 46).

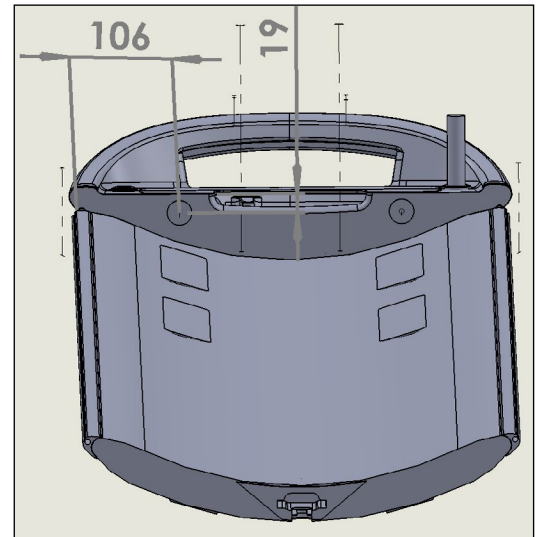


Fig. 46

2. Place the latch assembly onto the CT as shown in Fig. 47.

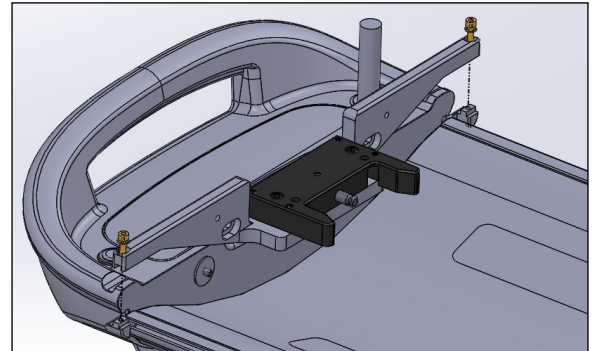


Fig. 47

3. Slide the pins on P/N 2007780 and 2007805 into the groove on the edge of the CT cradle as shown in Fig. 48.

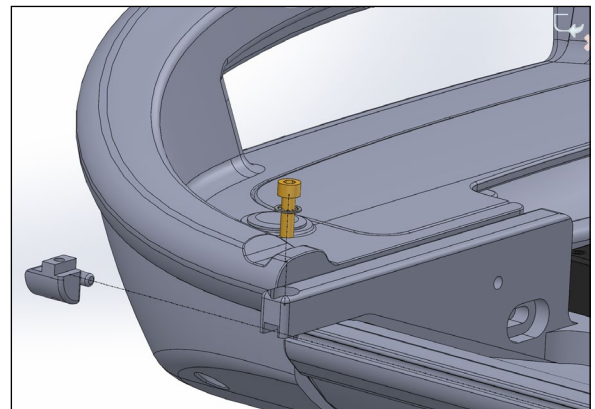


Fig. 48

# INSTALLATION

4. Using Socket Head Cap Screw P/N 3001053 and Toothed Washer P/N 3002137, attach P/N 2007780 and 2007805 to the latch assembly. While tightening the screws ensure that the latch assembly is centered on the CT (Fig. 49).

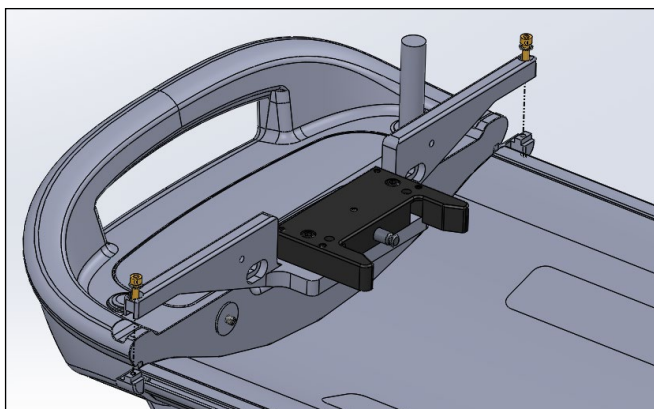
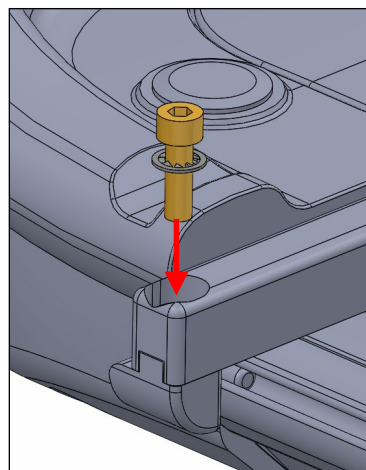


Fig. 49



5. Next tighten set screw P/N 3002138 (2 places) equally. Ensure that the latch is stable and does not move (Fig. 50).

**! NOTE ! Do not over tighten. Over tightening can cause the latch to be twisted.**

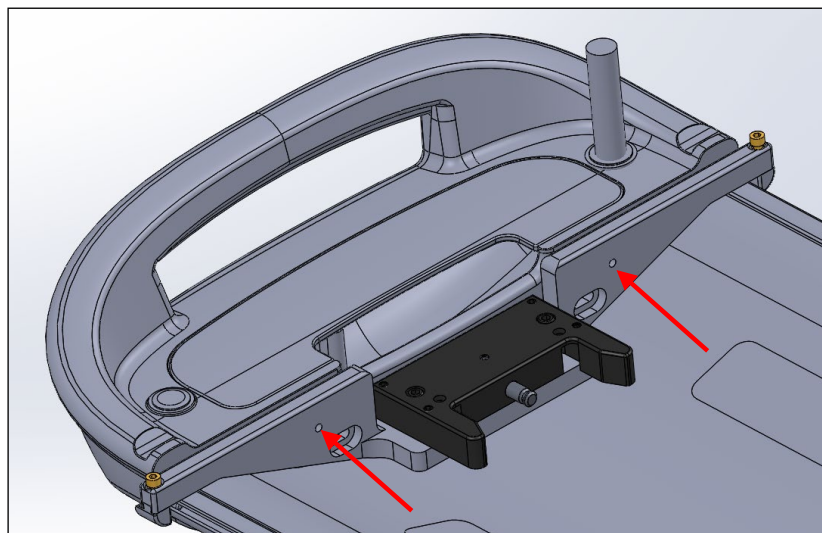


Fig. 50



# INSTALLATION

## ADJUSTING THE CT OVERLAY

Refer to Section “Adjust Head End Alignment Block” on page 25 for head end adjustment.

## ADJUST HEIGHT OF THE FOOT END MOUNTING BLOCK

The objective of the next steps is to verify that the Red Alignment Pin, inserted on the CT cradle, can slide freely onto the Foot Latch Mounting Block without binding (Fig. 51).

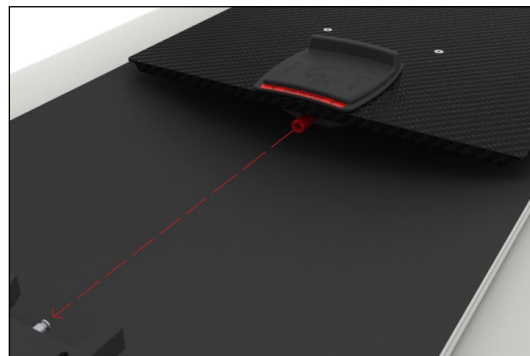


Fig. 51

1. Push the male end of the red Alignment Pin into the socket in the block on the underside of the CT Overlay (Fig. 52) until the handle on the topside reads “LOCKED” (Fig. 53).



Fig. 52



Fig. 53

2. Place the CT Overlay on the CT cradle overhanging the head end by 3-4 inches (Fig. 54). Align the CT Overlay on the centerline of the CT cradle (Fig. 55).



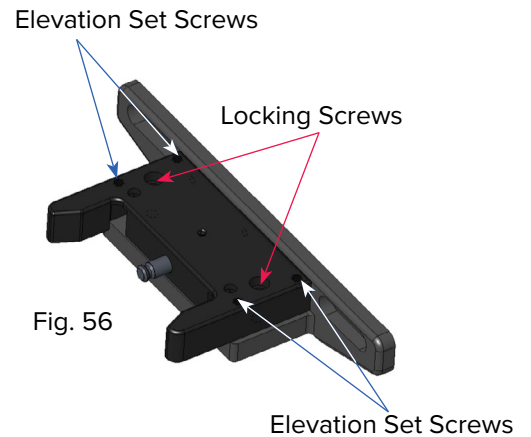
Fig. 54



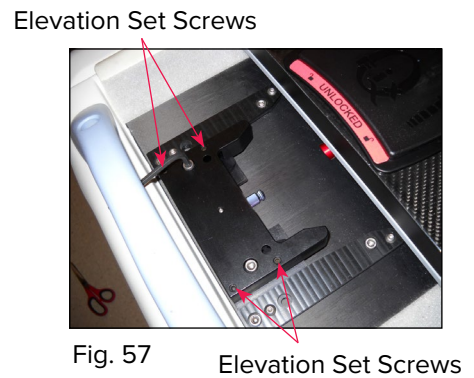
Fig. 55

# INSTALLATION

3. Slide the CT Overlay towards the CT cradle foot end until the red Alignment Pin is close to the metal Pin on the Foot End Mounting Assembly. At this point, adjustment will be needed to allow the CT Overlay to engage the Foot Latch properly.
  - a. Begin by adjusting the height of the Foot Latch Mounting Block on the existing CT, by loosening the (2) Locking Screws  $\frac{1}{4}$ –20 (Fig. 56).



- b. Adjust the height of the Mounting Block using the (4) Elevation Set Screws (found on the mounting block) using the  $\frac{1}{8}$  in. Allen Wrench (provided) (Fig. 57).



- c. Adjust the Elevation Set Screws as needed then engage the Mounting Block Pin into the red Alignment Pin and re-tighten the Locking Screws while holding the Mounting Block parallel, from side to side, to the CT Overlay bottom.
  - d. Lock the Foot Latch Mounting Block by tightening the (2)  $\frac{1}{4}$ –20 x 1 Locking Screws using  $\frac{3}{16}$  in. Allen wrench (provided).
  - e. Check that the Foot Latch Mounting Block is level as the screws are tightened. If longer bolts are needed, one set of longer  $\frac{1}{4}$ –20 Locking Screws are supplied.



# INSTALLATION

4. Verify that the CT Overlay can be pushed on and off the Mounting Block Pin without binding by engaging and releasing the CT Overlay. Make sure the CT Overlay stays centered on the cradle while doing this. Verify that the Mounting Block Pin is parallel to the Alignment Pin and at the correct height.
  - a. (If the Alignment Pin is binding, you may adjust the tilt of the Mounting Block Pin by first loosening the Mounting Block Screws. Then equally adjust the two Elevation Set Screws up or down with the 1/8" Allen Key to change the tilt until level with the Alignment Pin and the CT cradle. Gently re-tighten the two Mounting Block Screws. (DO NOT OVERTIGHTEN). Go back to step 3.
5. Remove the red Alignment Pin from the CT Overlay by pulling back on the release handle in the direction indicated by the unlock symbols.
6. Slide the CT Overlay all the way towards the foot end until the handle confirms it is locked on. When green “LOCKED” shows and no red, it is locked on (Fig. 58).
7. To remove, pull/push on the handle to unlock and continue to push the CT Overlay 3–4 in. away from the latch to verify it functions properly (Fig. 59).



Fig. 58



Fig. 59

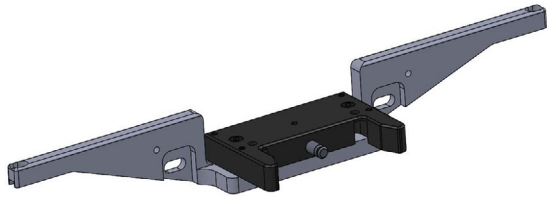
# **SIEMENS**

## **Vario 2 RT Cradle**

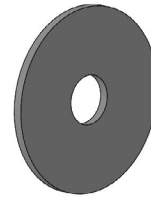
### **INSTALLATION MANUAL**

# INSTALLATION

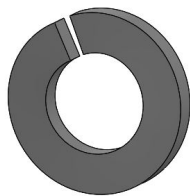
## PARTS PROVIDED



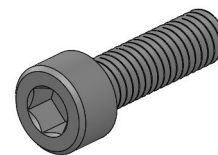
(1) Latch Assembly



(2) 3002347, Oversize M6 Washer



(2) 3001826, M6 Split Locking Washer



(2) 3001551, Socket Head Cap Screw  
M6 x 1 x 20 mm

# INSTALLATION

## INSTALLATION INSTRUCTIONS

1. Place the Latch Assembly onto the CT as shown in Fig. 60.

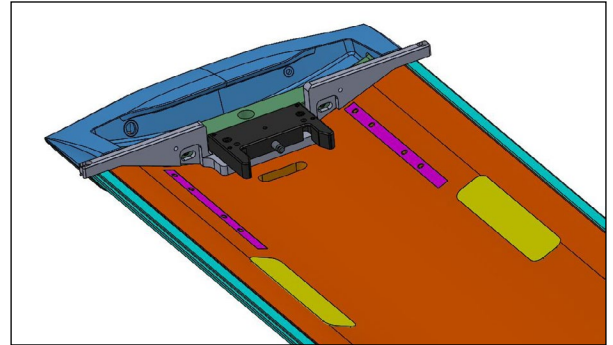


Fig. 60

2. Center the Latch Assembly along the width of the cradle and ensure that the slots on the Latch Assembly lineup with the screw holes on the cradle (Fig. 61).

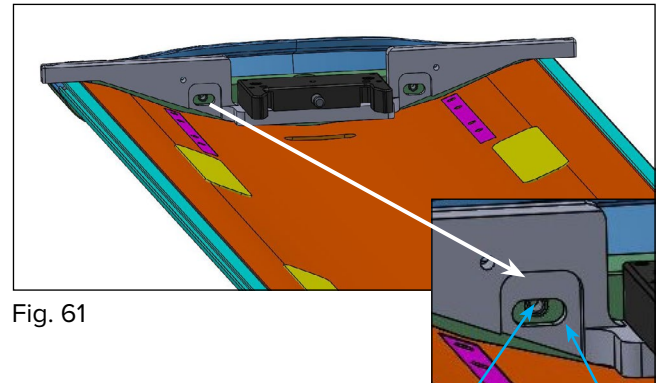


Fig. 61

Screw Hole Slot

3. Using Socket Head Cap screws (3001551), Split Locking Washer M6 (3001826) and Oversize M6 Washer (3002347) to secure the Latch Assembly onto the cradle. While tightening the screws, ensure that the Latch Assembly is centered on the CT (Fig. 62).

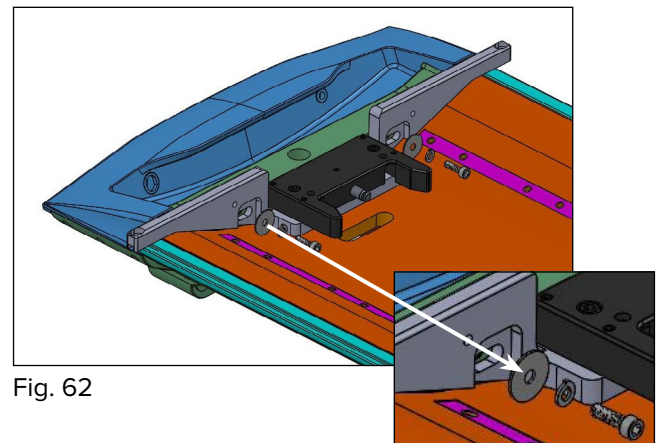


Fig. 62

# INSTALLATION

## ADJUSTING THE CT OVERLAY

Refer to Section “Adjust Head End Alignment Block” on page 25 for head end adjustment.

## ADJUST HEIGHT OF THE FOOT END MOUNTING BLOCK

The objective of the next steps is to verify that the Red Alignment Pin, inserted on the CT cradle, can slide freely onto the Foot Latch Mounting Block without binding (Fig. 63).

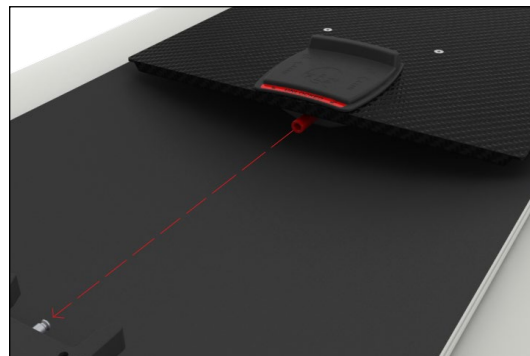


Fig. 63

1. Push the male end of the red Alignment Pin into the socket in the block on the underside of the CT Overlay (Fig. 64) until the handle on the topside reads “LOCKED” (Fig. 65).



Fig. 64

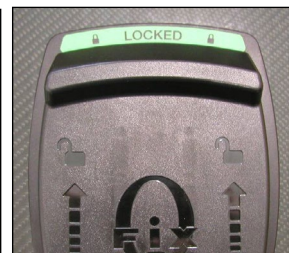


Fig. 65

2. Place the CT Overlay on the CT cradle overhanging the head end by 3-4 inches (Fig. 66). Align the CT Overlay on the centerline of the CT cradle (Fig. 67).



Fig. 66



Fig. 67

# INSTALLATION

3. Slide the CT Overlay towards the CT cradle foot end until the red Alignment Pin is close to the metal pin on the Foot End Mounting Assembly. At this point, adjustment will be needed to allow the CT Overlay to engage the Foot Latch properly.

- a. Begin by adjusting the height of the Foot Latch Mounting Block on the existing CT, by loosening the (2) Locking Screws  $\frac{1}{4}$ –20 (Fig. 68).

Elevation Set Screws

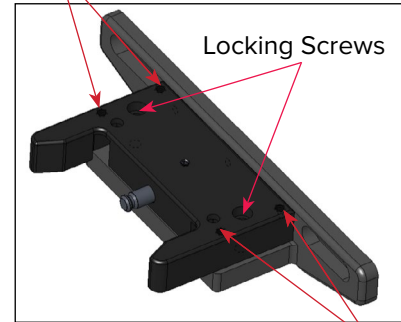


Fig. 68

Elevation Set Screws

- b. Adjust the height of the Mounting Block using the (4) Elevation Set Screws (found on the mounting block) using the  $\frac{1}{8}$  in. Allen Wrench (provided) (Fig. 69).

Elevation Set Screws

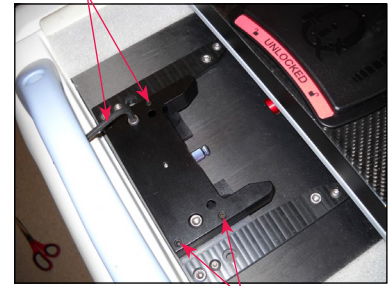


Fig. 69

Elevation Set Screws

- c. Adjust the Elevation Set Screws as needed then engage the Mounting Block Pin into the red Alignment Pin and re-tighten the Locking Screws while holding the Mounting Block parallel, from side to side, to the CT Overlay bottom.
- d. Lock the Foot Latch Mounting Block by tightening the (2)  $\frac{1}{4}$ –20 x 1 Locking Screws using  $\frac{3}{16}$  in. Allen wrench (provided).
- e. Check that the Foot Latch Mounting Block is level as the screws are tightened. If longer bolts are needed, one set of longer  $\frac{1}{4}$ –20 Locking Screws are supplied.

# INSTALLATION

4. Verify that the CT Overlay can be pushed on and off the Mounting Block Pin without binding by engaging and releasing the CT Overlay. Make sure the CT Overlay stays centered on the cradle while doing this. Verify that the Mounting Block Pin is parallel to the Alignment Pin and at the correct height.
  - a. (If the Alignment Pin is binding, you may adjust the tilt of the Mounting Block Pin by first loosening the Mounting Block Screws. Then equally adjust the two Elevation Set Screws up or down with the 1/8" Allen Key to change the tilt until level with the Alignment Pin and the CT cradle. Gently re-tighten the two Mounting Block Screws. (DO NOT OVERTIGHTEN). Go back to step 3.
5. Remove the red Alignment Pin from the CT Overlay by pulling back on the release handle in the direction indicated by the unlock symbols.
6. Slide the CT Overlay all the way towards the foot end until the handle confirms it is locked on. When green "LOCKED" shows and no red, it is locked on (Fig. 70).
7. To remove, pull/push on the handle to unlock and continue to push the CT Overlay 3–4 in. away from the latch to verify it functions properly (Fig. 71).



Fig. 70



Fig. 71



440 Church Road  
Avondale, PA 19311 USA  
[www.Qfix.com](http://www.Qfix.com)

+1 484.720.6053 / 800.526.5247

+1 610.268.0588 / 800.831.8174

[sales@Qfix.com](mailto:sales@Qfix.com)