




positioning  
patients for life.®

# INSTALLATION MANUAL

## kVue™ Beam Assembly





EC	REP	Advena Limited Tower Business Centre, 2nd Flr Tower Street, Swatar, BKR 4013 Malta	 Made in the USA by Qfix 440 Church Rd, Avondale, Pennsylvania, USA +1 484-720-6053 <a href="http://www.Qfix.com">www.Qfix.com</a>
----	-----	---	--

kVue, Stealth Beam and OneTouch are trademarks of Qfix.

# TABLE OF CONTENTS

GENERAL PRECAUTIONS..... 4

    WARNING STATEMENTS ..... 4

    COLLISION HAZARDS..... 4

    TOOLS REQUIRED (NOT PROVIDED):..... 4

    WARNING LABELS & DESCRIPTIONS..... 5

DISASSEMBLY INSTRUCTIONS.....7

ASSEMBLY INSTRUCTIONS ..... 8

# GENERAL PRECAUTIONS

## WARNING STATEMENTS

**! WARNING ! NO MODIFICATION OF THIS EQUIPMENT IS ALLOWED. IF ANY PART OF THIS DEVICE EXPERIENCES A CATASTROPHIC LOAD, APPEARS DAMAGED OR FUNCTIONS IMPROPERLY, DISCONTINUE USE IMMEDIATELY AND CONTACT QFIX AT +1 484-720-6053 OR TECHSUPPORT@QFIX.COM.**

**! WARNING ! THE ONETOUCH IS A PRECISION MECHANISM AND IS ONLY FOR USE WITH APPROVED QFIX KVUE DEVICES. UNAPPROVED NON-QFIX DEVICES THAT HAVE NOT BEEN VALIDATED BY QFIX MAY NOT BE SAFE FOR USE AND WILL VOID WARRANTY IF USED.**

**! CAUTION ! WHEN LIFTING THE REPLACEMENT BEAM SET, LIFT BOTH BEAMS TOGETHER KEEPING THEM LEVEL. LIFTING ONE BEAM MAY CAUSE THE OTHER BEAM TO FALL POTENTIALLY RESULTING IN INJURY OR DAMAGE TO THE EQUIPMENT.**

## COLLISION HAZARDS

Use caution when moving the kVue or gantry to avoid equipment damage or patient injury. The wide variety of motions obtainable with couch bases and treatment heads may present situations where the kVue Insert collides with other items. Equipment damage may occur.

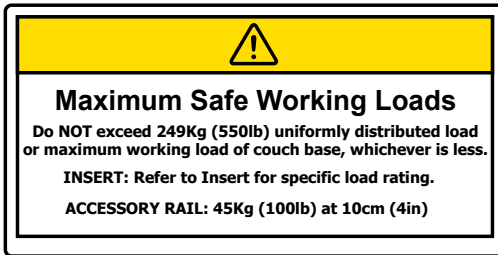
## TOOLS REQUIRED (NOT PROVIDED):

- Hex key, size  $\frac{5}{32}$ "
- Hex key, size  $\frac{3}{16}$ "
- Hex key, size  $\frac{1}{4}$ "
- Hex key, size 3 mm
- Leveling Device
- Caliper
- Loctite

# GENERAL PRECAUTIONS

## WARNING LABELS & DESCRIPTIONS

Refer to [Qfix.com](http://Qfix.com) for a listing of symbols and their definitions.



### LOAD RATING

DO NOT exceed 249 kg (550 lb) uniformly distributed load or maximum safe working load of couch base, whichever is less.

The load rating for each kVue Insert is specified in the instructions for the kVue Insert.

The accessory rail load rating is 45 kg (100 lb) at 10 cm (4 in).

↓ **NO STEP** ↓

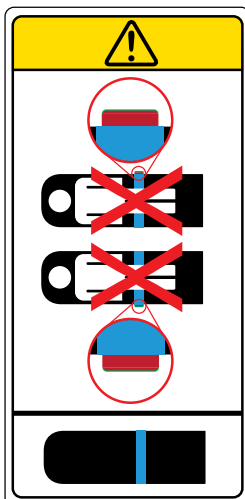
OR



### “NO STEP” LINE

The yellow line on the kVue Insert represents the end of the support beams. The area beyond the line has been designed and tested to support the patient’s upper torso or lower body not exceeding the load rating.

Standing or sitting on the kVue Insert beyond the “No Step” line may damage the kVue Insert or cause injury.



### ONETOUCH™ LATCH

Place a patient on the kVue ONLY when the red collar of the latch button is not visible. The OneTouch Latch has a built-in indicator to verify proper engagement. If the red collar of the latch button is visible, the locking mechanism is not engaged.

# GENERAL PRECAUTIONS

## WARNING LABELS & DESCRIPTIONS



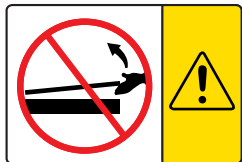
### PINCH POINTS

Use caution when moving the kVue to avoid patient injury. Extreme care has been taken to minimize pinch points and other hazards associated with the kVue. Common pinch points include:

- Between the kVue Insert and the OneTouch Latch
- Between the kVue Insert and the support beams
- Between the kVue and other pieces of equipment in the treatment room, including the Linac treatment head



OR

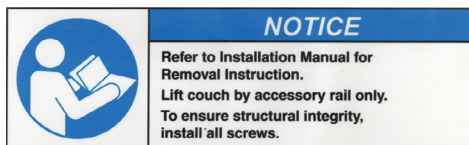


### KVUE INSERT INSTALLATION AND REMOVAL

**! WARNING ! NEVER LIFT THE END OF THE KVUE INSERT**

The mating pins may bend or break, rendering the kVue unusable.

Refer to the kVue Couch Top Installation Manual for kVue installation and removal instructions.

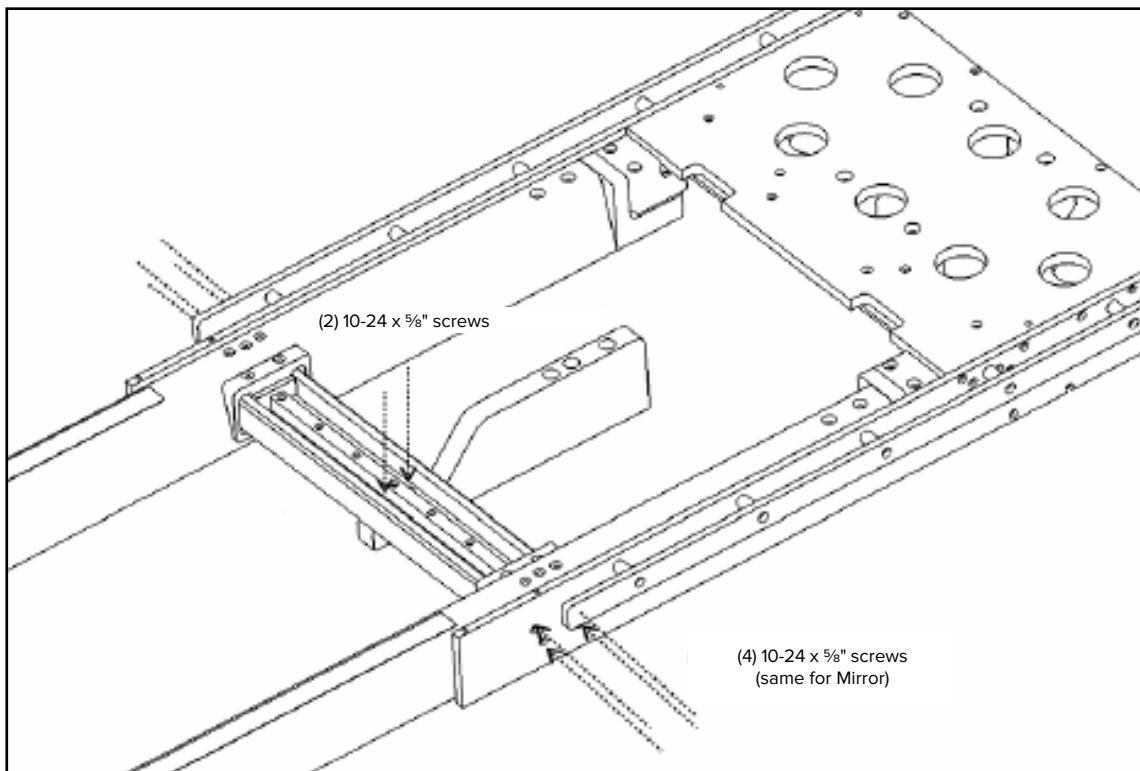


### MOVING THE COUCH TOP

DO NOT lift couch by the support beams. They are designed to take a downward load and should never be lifted. Serious damage to couch top and support beams may result if the couch top is lifted by the support beams. During installation and maintenance, lift couch top by accessory rail only.

# DISASSEMBLY INSTRUCTIONS

1. Remove any kVue Insert that may be installed.
2. Remove the kVue Back Panel
  - A. Remove (2) ¼"-20 x 1" FHCS and (2) ¼"-20 x 1.5" FHCS from the kVue Back Panel
  - B. Remove the kVue Back Panel and set aside
3. Remove the OneTouch mechanism
  - A. Remove the (4) 10-24 x ⅝" screws from the OneTouch mechanism
  - B. Remove the OneTouch mechanism and set aside
4. Remove the beam assembly
  - A. Move beams to the central position and tape them together
  - B. Tape the beams to the bearing itself
  - C. Remove (2) 10-24 x ⅝" SHCS from the center support
  - D. Remove (4) 10-24 x ⅝" SHCS from the left frame panel and (4) 10-24 x ⅝" SHCS from the right frame panel
  - E. Slide the beam assembly forward from the baseframe
  - F. Set aside the beam assembly



# ASSEMBLY INSTRUCTIONS

1. Line up the two beams, vertical side against side panel with the right beam and left beam parallel to each other.
  - A. Insert the channel with the bearing attached through one beam insert and out through the other beam insert.
  - B. For each beam, line up the bearing pillow block with the beam insert and apply thread locker (Loctite) to each screw.  
(2) M5 x 35 mm into the upper holes and (2) M5 x 25 mm into the lower holes (Fig. 2).

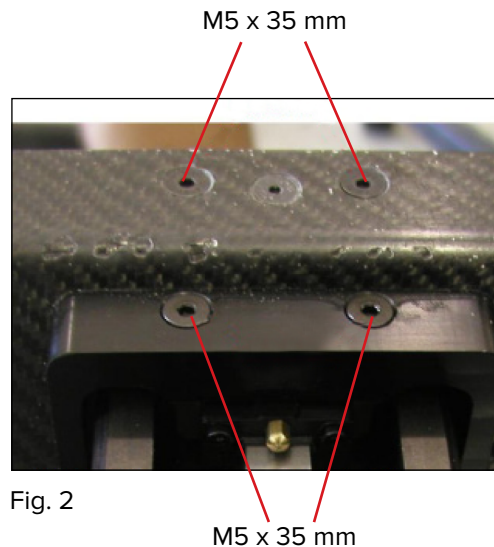


Fig. 2

2. On each beam, attach the roller bearing assembly to the rear beam insert using (2)  $\frac{5}{16}$ -18 x 1- $\frac{3}{4}$ " screws on the lower surface and (2)  $\frac{5}{16}$ -18 x 3" screws on the upper surface (Fig. 3) also placing a 0.125 inch shim in between on both beams (Fig. 4).

**! NOTE ! DO NOT use Loctite. The part may need to be removed upon calibration for extra or less shim. Also, be sure to keep the screws with each other while inserting them.**

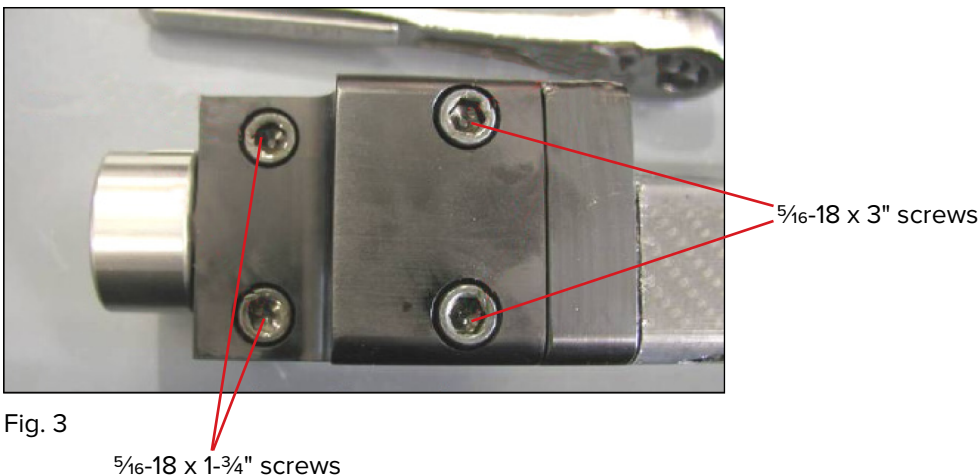


Fig. 3

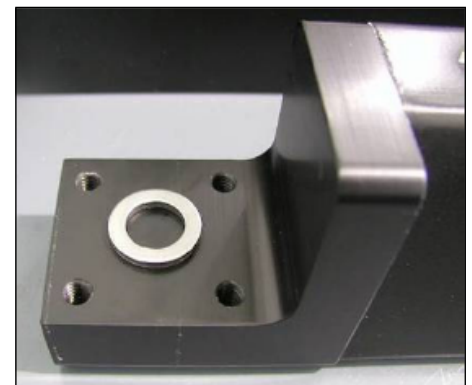


Fig. 4

3. Join the channel with the beams now attached to the assembly with (4) 10-24 x  $\frac{5}{8}$ " on each side and insert (2) 10-24 x  $\frac{5}{8}$ " screws to secure the front mount block to the channel as shown in Fig. 1. The part may need to be moved around to face the holes.



# ASSEMBLY INSTRUCTIONS

4. With everything attached, see how level the beams are with respect to one another.

A. Ensure the frame assembly is level (Fig. 5).

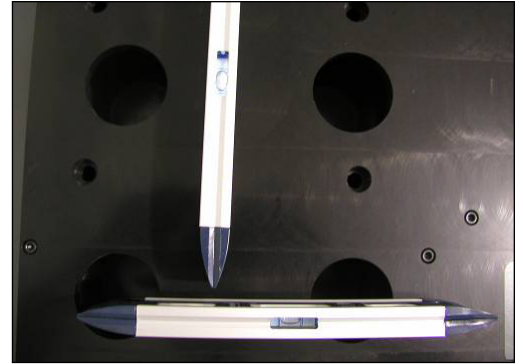


Fig. 5

B. Check how level each beam is along its entire length (Fig. 6 & 7).



Fig. 6



Fig. 7

C. Check how level the beams are with respect to each other (Fig. 8).

**! NOTE !** You may need to press down slightly on the ends of the beams to ensure the beam rollers are contacting the cam surface.



Fig. 8

# ASSEMBLY INSTRUCTIONS

5. If the cam follower does not touch the top of the assembly (when the beams move side to side the cam follower remains stationary) or if the beams are not level with one another, more shims must be inserted in between where the beam connects to the cam follower assembly for the lower lying beam. The following procedures provide the instructions to insert additional shims:

**! NOTE ! A pack of shims is included.**

- A. Move the unbalanced, lower lying beam to the notch on the edge of the back cover to expose all 4 screws (Fig. 9).

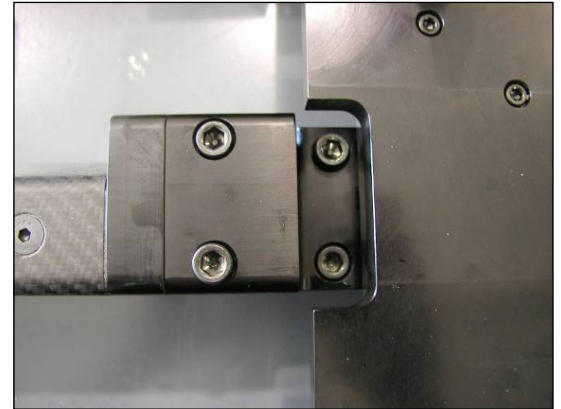


Fig. 9

- B. Remove the 4 screws and place as many shims as needed in the middle of the rear beam insert (Fig. 10).

**! NOTE ! Numerous attempts may be required to get it level.**

- C. Slide the cam follower assembly into place and reinsert the screws.

**! NOTE ! Again, be careful when tightening to not overload a single corner. Keep the screws level with each other while tightening.**

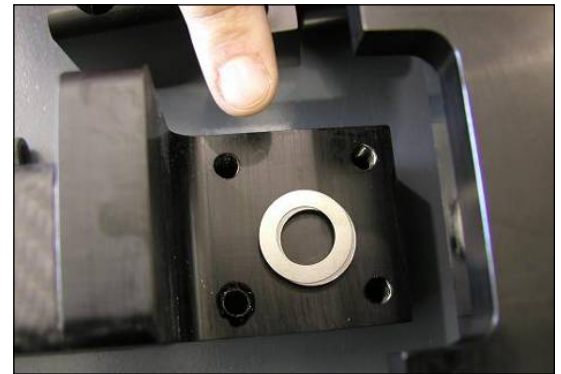


Fig. 10

- D. Repeat steps 5A–C until the beams are level and the cam follower is touching the bottom of the cam surface.

6. Attach the kVue OneTouch™ Assembly using (4) 10-24 x  $\frac{5}{8}$ " screws. (Leave these screws slightly loose). Make the surfaces of the unit as flush with the edges of the assembly as possible. Install a back panel onto the kVue assembly and screw into place. Next tighten the front screws on the OneTouch assembly. Remove the back panel and tighten the screws in the rear of the OneTouch.

7. Attach the back panel to the assembly using (2)  $\frac{1}{4}$ -20 x 1" FHCS and (2)  $\frac{1}{4}$ -20 x 1.5" FHCS.





440 Church Road  
Avondale, PA 19311 USA  
[www.Qfix.com](http://www.Qfix.com)

+1 484-720-6053 / 800.526.5247

+1 610.268.0588 / 800.831.8174

[sales@Qfix.com](mailto:sales@Qfix.com)

2002659\_EN\_G  
2021-07