

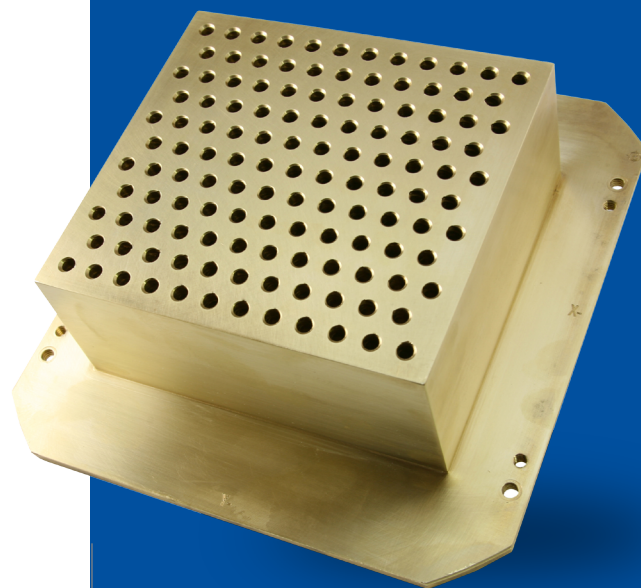


On Demand Design and Delivery of  
Custom Treatment Devices  
and CNC Components

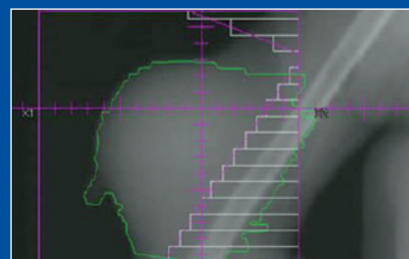
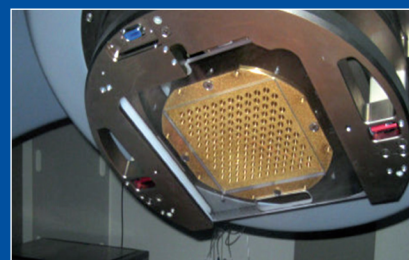
## Spatially Fractionated GRID Radiotherapy

### Clinical Advantages:

- A possible solution when conventional treatments are not feasible or are ineffective.
- Can be very effective on extremely large bulky advanced tumors.
- Spatial fractionation versus time fractionation (250 points of entry)
- One centimeter holes equidistantly spaced so the radiation goes through as separate beams.
- Delivery of higher doses (15 to 20 Gy) in a single treatment.
- Functions like “virtual” brachytherapy where stereotactic, high dose beamlets traverse the tumor in a dosimetric pattern akin to interstitial catheters.
- GRID block is a one time purchase. May be used again and again making it an attractive option from a cost perspective.
- Compatible with any linear accelerator.



### .decimal Modulator



### Would you like to learn more?

Visit us at:  
[www.products.dotdecimal.com](http://www.products.dotdecimal.com)  
or call toll free  
1.800.255.1613