

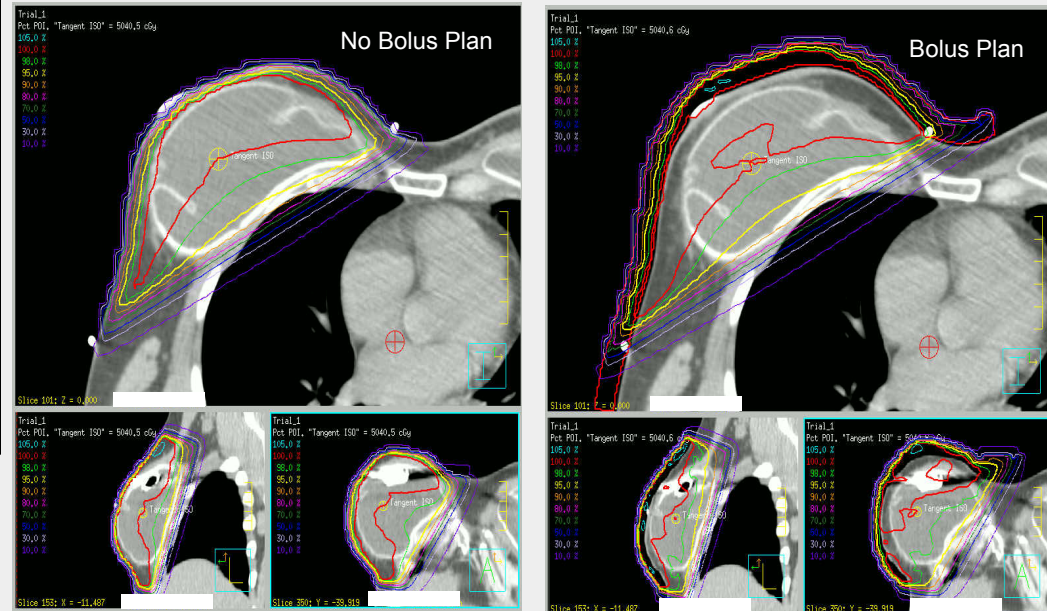
PATIENT HISTORY

- Right Breast, Post-mastectomy.
- Tissue expander used to create a soft pocket to contain the permanent implant.
- Must maintain adequate dose coverage to skin tissue.
- Difficult to fit sheet bolus on patient without creating air gaps unless custom bolus used.

DOSE PRESCRIPTION

- Prescription for 50.4 Gy in 28 fractions
- Customized 1cm uniform wax bolus by .decimal used for first 14 fractions and then discontinued.
- Last 14 fractions done without bolus.

DOSE PLANNING



BOLUS CREATION

- Create Body and make copy
- Expand Copy to bolus thickness amount
- Remove original body
- contour
- Remove parts of bolus superior and inferior
- Calculated dose
- Order bolus from .decimal

FOLLOWUP (7 months post treatment)

- Patient able to tolerate and completed course of therapy as planned without a break.
- Brisk skin erythema, uniformly over treatment area at discharge.
- 4 week FU revealed a decrease in hyper-pigmentation, a decrease in erythema with good skin healing.

SUMMARY

- Creation of bolus easily done with tools in treatment planning system.
- Manufacture of bolus easily done by .decimal.
- Fit for difficult contour shapes very well with .decimal bolus, no significant air gaps or folds that are seen with sheet bolus.

BOLUS SETUP

