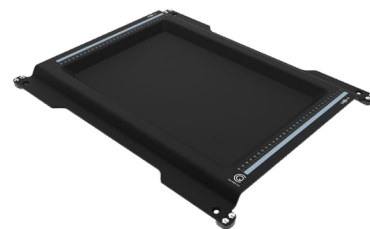


ONEFit™ Indexing Device

TECHNICAL DATA SHEET

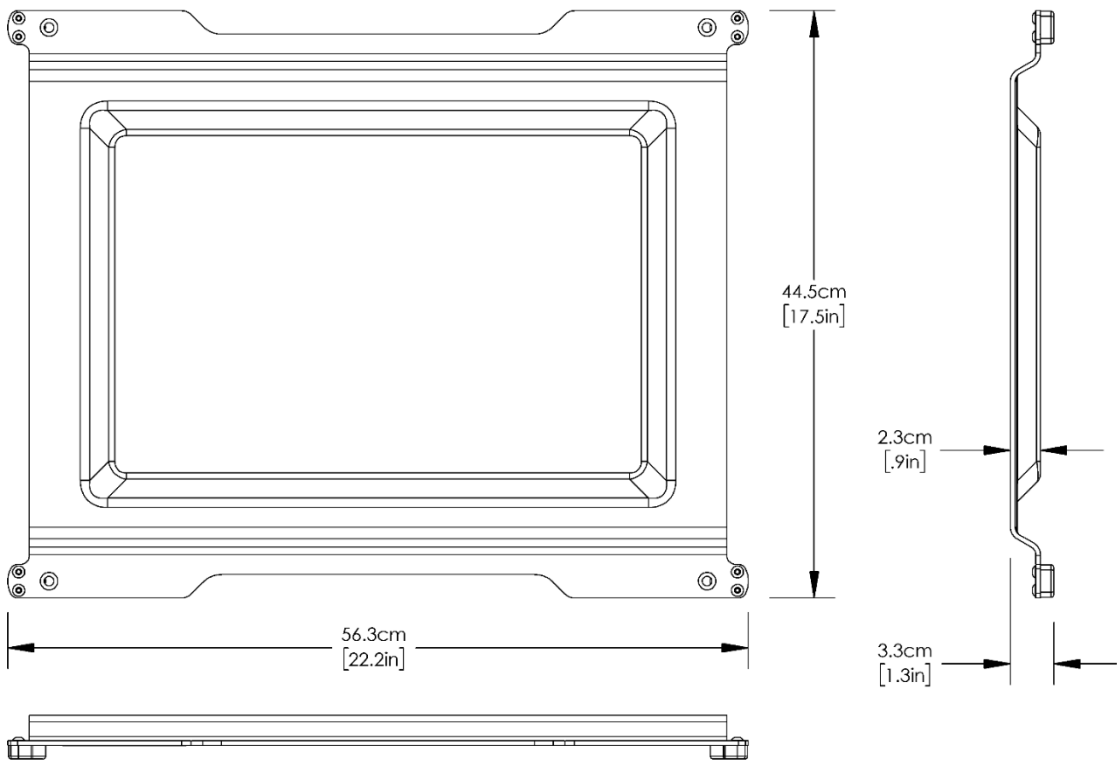


PRODUCT NAME	ONEFit Indexing Device
PRODUCT NUMBER	RT-4800-C0 ONEFit Indexing Device, Qty 1
PACKAGES WITH THIS PRODUCT INCLUDED	<p>RT-4800-KG1 Gold BPL Package, includes ONEFit Indexing Device (x2), Body Pro-Lok ONE™ Respiratory Belt (x2)</p> <p>RT-4800-KG2 Gold ZiFix Traverse Package, includes ONEFit Indexing Device (x2), ZiFix Traverse™ Motion Control System (x2)</p> <p>RT-4800-KS1 Silver BPL Package, includes ONEFit Indexing Device (x1), Body Pro-Lok ONE™ Respiratory Belt (x1)</p> <p>RT-4800-KS2 Silver ZiFix Traverse Package, includes ONEFit Indexing Device (x1), ZiFix Traverse™ Motion Control System (x1)</p> <p>RT-4800-KU ZiFix Upgrade, includes ONEFit Indexing Device (x1), ONE Clamp Set</p>
GENERAL DESCRIPTION	ONEFit is a lightweight, indexable device designed to integrate with many couhtop profiles. It minimizes the space required compared to traditional SBRT platforms while maintaining the benefits of effective patient immobilization using CQ Medical's respiratory restriction solutions.
MR STATUS	Not intended for use in an MR environment.
INTEGRATION	Indexes to Prodigy™, Prodigy 2, Elekta and Varian Exact Style couhtop styles.
FDA CLEARANCE	Yes
CE MARKED (EU DOC)	Yes
OTHER COUNTRY REGISTRATIONS	Available upon request
COUNTRY OF MANUFACTURE	USA

TECHNICAL DETAILS

COMPONENT	RT-4800-C0 ONEFit Indexing Device			
PRIMARY MATERIALS	Carbon Fiber Composite			
WEIGHT (APPROX)	1.4 kg (3 lbs)			
DIMENSIONS (CM)	45 L x 56 W x 3 H			
DOSIMETRIC PROPERTIES	LOCATION	ATTENUATION 6 MV PHOTONS 10 X 10 FIELD SIZE (CM²)	ATTENUATION 18 MV PHOTONS 10 X 10 FIELD SIZE (CM²)	PROTON WATER EQUIVALENCY 6MV 10 X 10 FIELD SIZE (CM²)
	Middle of device	2.32%	1.45%	5.5 mm
	Performance Specifications are for reference only, values may vary based on setup and equipment.			

TECHNICAL DRAWING



PACKAGING

UNIT PACK	Each
UNITS / BOX	One device-may have several component parts in box
SHELF LIFE	Not Applicable
WARRANTY	See CQ Medical website for Product Warranty Statement
STERILIZATION	Non-Sterile
RELEASE DATE	2025

SYSTEM CUSTOMIZATION

COMPATIBLE WITH:	ONE Respiratory Belt with ONE Clamp (BPL028) ZiFix™ Traverse Abdominal System with ONE Clamp (RT-4558CB04) ONEBridge™ (RT-4800-B3)
DEVICES THAT INTEGRATE:	T-Shape Vac-Lok™ (VL0017, VL0018 or equivalent) Monarch™ Overhead Arm Positioner (OAP110) Pro Wing Board™ (OAP220) Extended Wing Board™ (MTWB08T, MTWB08U) Standard Wing Board (MTWB09) FlexLock™ Knee & Foot Support (RT-4800-KS, RT-4800-FS) KneeFix™ 3 & Feetfix™ 3 (301052, 301071) InfinityLock™ Hand Grips (RT-4800-04)